



Play 'Castle Volleyball

National League 2019/2020

1° Day Women 2N

Match report

Newcastle Staffs Ladies 1
Coventry & Warwick Ladies 3

Match	W2N 6	Spectators	
Date	10/12/2019	Receipts	
Time	15.15.00	Hall	Keele University
City	Keele		

Referees BOUGHTON John, GRIMES Rita


Set	Time	Partial score			Score
1	0.33	8-6	16-11	21-20	25-22
2	0.24	6-8	11-16	15-21	16-25
3	0.17	5-8	8-16	9-21	10-25
4	0.20	6-8	11-16	15-21	17-25
1.34					68-97

Newcastle Staffs L.	Set					Vote	Points			Serve			Reception				Attack			BK Pts			
	1	2	3	4	5		Tot	BP	W-L	Tot	Err	Pts	Tot	Err	Pos%	(Exc%)	Tot	Err	Blo		Pts	Pts%	
1 GUEST	3	4	6	6		5.6	3	-	-	8	-	-	19	3	58%	(37%)	23	-	-	3	13%		
2 C REAH	4	5	6	5		5.5	9	5	+3	10	1	3	5	2	20%	-	18	2	1	5	28%		
4 POTES						.	.	.	-1	.	.	.	2	1	50%	(50%)		
5 FURSICH			2			5.7	5	.	+3	5	.	.	6	.	50%	(17%)	12	1	1	4	33%		
6 CHADWICK				1		5.7	4	3	+2	5	12	2	.	4	33%		
7 BURTON	2	3	4	4		5.5	2	1	.	15	2	1	.	.	.	3	.	.	1	33%			
8 HALLWORTH	1	2	3	3		5.8	6	2	+4	14	.	1	1	1	.	15	.	1	4	27%			
9 HARDING						1	.	.	1		
10 KOSCIOLEK	6	1	5	2		5.5	5	2	-4	6	2	.	26	3	62%	(31%)	40	3	1	5	12%		
11 L COPESTAKE							
12 L KETTLE						.	.	.	-5	.	.	.	24	5	42%	(17%)		
14 WATSON	5	6	1			6	2	1	-2	6	.	1	.	.	.	12	3	1	1	8%			
Team totals							36	14	.	69	5	6	84	15	50%	(25%)	136	11	5	27	20%	3	
Points won:							Ser	Att	Blo	Op	Er												
Set 1							3	10	1	11	24	.	3	21	3	57%	(38%)	55	2	1	10	18%	1
Set 2							1	5	1	9	17	1	1	21	2	52%	(33%)	28	2	1	5	18%	1
Set 3							1	2	1	6	10	.	1	21	5	48%	(10%)	22	4	2	2	9%	1
Set 4							1	10	.	6	18	4	1	21	5	43%	(19%)	31	3	1	10	32%	.
Head coach GUEST Richard																							
Assistant GUEST Keeley																							

Coventry & W.	Set					Vote	Points			Serve			Reception				Attack			BK Pts			
	1	2	3	4	5		Tot	BP	W-L	Tot	Err	Pts	Tot	Err	Pos%	(Exc%)	Tot	Err	Blo		Pts	Pts%	
4 ANDERSON			5	5		.	4	3	+3	4	1	1	.	.	.	2	.	.	1	50%	2		
5 JASTRZEBSKA	5	2	2	2		6	11	7	+5	19	5	4	.	.	.	17	.	1	6	35%	1		
6 SENKUTE	4	4	4	4		6.1	19	6	+9	18	1	3	32	1	78%	(56%)	46	8	.	16	35%		
7 ZANROSSO	3	3	3	3		6.4	5	5	+3	14	2	4	1	.	100%	.	4	.	.	1	25%		
8 L PIETRUNKO						.	.	.	-1	.	.	.	14	1	64%	(64%)		
9 GARAJOVA	2	5				6.3	6	2	+5	6	.	1	.	.	.	11	1	.	4	36%	1		
10 C SMITH			6	6		5.9	5	3	+4	13	12	1	.	4	33%	1		
12 LOMAX	6	6				7.8	3	1	.	6	.	1	.	.	.	18	2	1	2	11%	.		
14 BOSCO	1	1	1	1		5.6	12	6	+2	16	1	1	16	4	44%	(25%)	39	4	1	11	28%		
Team totals							65	33	+30	96	10	15	63	6	67%	(49%)	149	16	3	45	30%	5	
Points won:							Ser	Att	Blo	Op	Er												
Set 1							3	12	1	6	23	.	3	24	3	62%	(38%)	55	8	1	12	22%	1
Set 2							2	15	1	7	24	3	2	16	1	69%	(50%)	42	4	1	15	36%	1
Set 3							5	9	2	9	25	4	5	10	1	40%	(40%)	25	1	1	9	36%	2
Set 4							5	9	1	10	24	3	5	13	1	92%	(77%)	27	3	.	9	33%	1
Head coach SMITH Alex																							
Assistant																							

Newcastle Staffs Ladies					Coventry & Warwick Ladies						
Points S in Diff	Receptions 84	Points SO 22	KILL ON RECEPTION					Receptions 63	Points SO 32	Points S in Diff	
6 -5	Each 3.82 Recept	1 Point	1st ATTACK AFTER POSITIVE RECEPTION (+#)					Each 1.97 Recept	1 Point	6 +5	
5 -14			Errors	Blo	Pts%	Tot	Tot	Pts%	Blo	Errors	5 +2
4 -3			4	1	24%	38	42	43%	0	2	4 +6
3 -11			1st ATTACK AFTER NEGATIVE RECEPTION (-!)							3 +7	
2 +4	Serve 69	Points BP 14	Errors	Blo	Pts%	Tot	Tot	Pts%	Blo	Errors	2 +5
1 .	Each 4.93 Serve	1 Break Point	0	0	27%	15	14	21%	0	1	1 +4
			ATTACK ON DIG					Serve 96	Points BP 33		
			Errors	Blo	Pts%	Tot	Tot	Pts%	Blo	Errors	Each 2.91 Serve
			7	4	17%	83	93	26%	3	13	1 Break Point

BP Break point Pts Points
 Err Error Blo Blocked
 Pos% Positive + # Exc Excellent
 W-L Won - Lost [n] Starting Setter
 [n] Starting line-up
 □ Substitute ○ Starting Srv



VolleyStats.co.uk
 Professional Volleyball Performance Analysis



National League 2019/2020

1° Day Women 2N

Play 'Castle Volleyball

Match report - Set 1

Newcastle Staffs Ladies 1
Coventry & Warwick Ladies 3

Match	W2N 6	Spectators	
Date	10/12/2019	Receipts	
Time	15.15.00	Hall	Keele University
City	Keele		

Set	Time	Partial score			Score
1	0.33	8-6	16-11	21-20	25-22
0.33					25-22

Referees BOUGHTON John, GRIMES Rita

Newcastle Staffs L.	1	Set	Vote	Points			Serve			Reception				Attack			BK Pts		
				Tot	BP	W-L	Tot	Err	Pts	Tot	Err	Pos%	(Exc%)	Tot	Err	Blo		Pts	Pts%
1 GUEST	[3]		5.5	1	.	.	3	.	.	6	1	67%	(50%)	11	.	.	1	9%	.
2 C REAH	[4]		6.2	4	2	+4	4	.	1	.	.	.	9	.	.	2	22%	1	
4 POTES			
5 FURSICH			
6 CHADWICK	[]		1	1	
7 BURTON	[2]		5.2	.	.	.	4	1	
8 HALLWORTH	[1]		6.3	3	2	+2	6	.	1	1	1	.	5	.	.	2	40%	.	
9 HARDING			
10 KOSCIOLEK	[6]		5.6	4	2	+2	2	.	.	10	1	50%	(40%)	21	.	1	4	19%	.
11 L COPESTAKE			
12 L KETTLE	[]		4	.	75%	(25%)	
14 WATSON	[5]		6.3	2	1	.	4	.	1	.	.	.	7	2	.	1	14%	.	
Team totals				14 7 +8			24 . 3			21 3 57% (38%)				55 2 1 10 18%			1		
Points won:				Ser	Att	Blo	Op	Er											
Set 1				3	10	1	11	24	.	3	21 3 57% (38%)				55 2 1 10 18%			1	
Head coach GUEST Richard																			
Assistant GUEST Keeley																			

Coventry & W.	①	Set	Vote	Points			Serve			Reception				Attack			BK Pts		
				Tot	BP	W-L	Tot	Err	Pts	Tot	Err	Pos%	(Exc%)	Tot	Err	Blo		Pts	Pts%
4 ANDERSON			
5 JASTRZEBSKA	[5]		6.4	4	3	+4	4	.	2	.	.	.	4	.	.	1	25%	1	
6 SENKUTE	[4]		5.7	5	.	.	4	.	.	15	.	73%	(40%)	20	5	.	5	25%	.
7 ZANROSSO	[3]		5.9	.	.	.	4	1	
8 L PIETRUNKO	[]		.	.	.	-1	.	.	.	2	1	50%	(50%)	
9 GARAJOVA	[2]		6.1	2	.	+2	3	6	.	.	2	33%	.	
10 C SMITH			
12 LOMAX	[6]		7.9	3	1	+1	4	.	1	.	.	.	13	1	1	2	15%	.	
14 BOSCO	[1]		5.8	2	1	-2	4	.	.	7	2	43%	(29%)	11	2	.	2	18%	.
Team totals				16 5 +4			23 . 3			24 3 62% (38%)				55 8 1 12 22%			1		
Points won:				Ser	Att	Blo	Op	Er											
Set 1				3	12	1	6	23	.	3	24 3 62% (38%)				55 8 1 12 22%			1	
Head coach SMITH Alex																			
Assistant																			

Newcastle Staffs Ladies				Coventry & Warwick Ladies						
Points S in Diff	Receptions 21 Points SO 7	KILL ON RECEPTION				Receptions 24 Points SO 11	Points S in Diff			
6 -1	Each 3 Recept 1 Point	1st ATTACK AFTER POSITIVE RECEPTION (+#)				Each 2.18 Recept 1 Point	6 .			
5 .		Errors	Blo	Pts%	Tot	Tot	Pts%	Blo	Errors	5 +2
4 .		1	1	20%	10	15	33%	0	1	4 -3
3 -2		1st ATTACK AFTER NEGATIVE RECEPTION (-!)					3 -1			
2 +5	Serve 24 Points BP 7	Errors	Blo	Pts%	Tot	Tot	Pts%	Blo	Errors	2 -2
1 +1	Each 3.43 Serve 1 Break Point	0	0	20%	5	6	17%	0	0	1 +1
		ATTACK ON DIG				Serve 23 Points BP 5				
		Errors	Blo	Pts%	Tot	Tot	Pts%	Blo	Errors	Each 4.6 Serve 1 Break Point
		1	0	18%	40	34	18%	1	7	

BP Break point Pts Points
Err Error Blo Blocked
Pos% Positive +# Exc Excellent
W-LWon - Lost [n] Starting Setter
[n] Starting line-up
[] Substitute [O] Starting Srv

Professional Volleyball Performance Analysis



National League 2019/2020

1° Day Women 2N

Play 'Castle Volleyball

Match report - Set 2

Newcastle Staffs Ladies 1
Coventry & Warwick Ladies 3

Match	W2N 6	Spectators	
Date	10/12/2019	Receipts	
Time	15.15.00	Hall	Keele University
City	Keele		

Set	Time	Partial score			Score
1	0.33	8 -6	16-11	21-20	25-22
2	0.24	6 -8	11-16	15-21	16-25
0.57					41-47

Referees BOUGHTON John, GRIMES Rita

Newcastle Staffs L.	Set	Vote	Points			Serve			Reception				Attack			BK Pts			
			Tot	BP	W-L	Tot	Err	Pts	Tot	Err	Pos%	(Exc%)	Tot	Err	Blo		Pts	Pts%	
1 GUEST	④	5.8	.	.	.	2	.	.	8	.	75%	(50%)	8		
2 C REAH	⑤	6.3	2	1	+1	3	.	1	.	.	.	2	.	1	.	50%	.		
4 POTES	□	.	.	.	-1	.	.	.	2	1	50%	(50%)		
5 FURSICH	□	6.8	3	.	+3	2	5	.	.	3	60%	.		
6 CHADWICK	□	5.5	.	.	-1	1	3	1		
7 BURTON	③	6.3	.	.	-1	4	1	1		
8 HALLWORTH	②	6.4	2	.	+2	3	3	.	.	1	33%	1		
9 HARDING			
10 KOSCIOLEK	①	5.5	.	.	-1	1	.	.	2	.	50%	.	5	1	.	.	.		
11 L COPESTAKE			
12 L KETTLE	□	.	.	.	-1	.	.	.	9	1	33%	(22%)		
14 WATSON	⑥	1	1		
Team totals			7	1	+1	17	1	1	21	2	52%	(33%)	28	2	1	5	18%	1	
Points won:			Ser	Att	Blo	Op	Er												
Set 1			3	10	1	11	24	.	3	21	3	57%	(38%)	55	2	1	10	18%	1
Set 2			1	5	1	9	17	1	1	21	2	52%	(33%)	28	2	1	5	18%	1
Head coach GUEST Richard																			
Assistant GUEST Keeley																			

Coventry & W.	Set	Vote	Points			Serve			Reception				Attack			BK Pts			
			Tot	BP	W-L	Tot	Err	Pts	Tot	Err	Pos%	(Exc%)	Tot	Err	Blo		Pts	Pts%	
4 ANDERSON			
5 JASTRZEBSKA	②	6.3	3	1	+1	7	2	1	5	.	.	2	40%		
6 SENKUTE	④	6.8	5	2	+3	2	.	.	8	1	75%	(62%)	12	1	.	5	42%		
7 ZANROSSO	③	7	1	1	.	2	1	2	.	.	1	50%	.		
8 L PIETRUNKO	□	3	.	67%	(67%)		
9 GARAJOVA	⑤	6.7	4	2	+3	3	.	1	.	.	.	5	1	.	2	40%	1		
10 C SMITH	□	6.1	2	2	+2	6	6	.	.	2	33%	.		
12 LOMAX	⑥	.	.	.	-1	2	1		
14 BOSCO	①	5.5	3	1	+1	4	.	.	5	.	60%	(20%)	10	1	1	3	30%		
Team totals			18	9	+9	24	3	2	16	1	69%	(50%)	42	4	1	15	36%	1	
Points won:			Ser	Att	Blo	Op	Er												
Set 1			3	12	1	6	23	.	3	24	3	62%	(38%)	55	8	1	12	22%	1
Set 2			2	15	1	7	24	3	2	16	1	69%	(50%)	42	4	1	15	36%	1
Head coach SMITH Alex																			
Assistant																			

Newcastle Staffs Ladies				Coventry & Warwick Ladies						
Points S in Diff	Receptions 21 Points SO 6	KILL ON RECEPTION				Receptions 16 Points SO 9	Points S in Diff			
6 -1	Each 3.5 Recept 1 Point	1st ATTACK AFTER POSITIVE RECEPTION (+#)				Each 1.78 Recept 1 Point	6 .			
5 -3		Errors	Blo	Pts%	Tot	Tot	Pts%	Blo	Errors	5 .
4 -2		0	0	30%	10	11	55%	0	0	4 +4
3 -4		1st ATTACK AFTER NEGATIVE RECEPTION (-!)					3 +3			
2 -1	Serve 17 Points BP 1	Errors	Blo	Pts%	Tot	Tot	Pts%	Blo	Errors	2 +4
1 +2	Each 17 Serve 1 Break Point	0	0	25%	4	4	0%	0	1	1 -2
		ATTACK ON DIG				Serve 24 Points BP 9				
		Errors	Blo	Pts%	Tot	Tot	Pts%	Blo	Errors	Each 2.67 Serve 1 Break Point
		2	1	7%	14	27	33%	1	3	

BP Break point Pts Points
Err Error Blo Blocked
Pos% Positive +# Exc Excellent
W-LWon - Lost Starting Setter
 Starting line-up
 Substitute Starting Srv



Professional Volleyball Performance Analysis



National League 2019/2020

1° Day Women 2N

Play 'Castle Volleyball

Match report - Set 3

Newcastle Staffs Ladies 1
Coventry & Warwick Ladies 3

Match	W2N 6	Spectators	
Date	10/12/2019	Receipts	
Time	15.15.00	Hall	Keele University
City	Keele		

Set	Time	Partial score			Score
1	0.33	8-6	16-11	21-20	25-22
2	0.24	6-8	11-16	15-21	16-25
3	0.17	5-8	8-16	9-21	10-25
1.14					51-72

Referees BOUGHTON John, GRIMES Rita

Newcastle Staffs L.	Set 3	Vote	Points			Serve			Reception				Attack			BK Pts		
			Tot	BP	W-L	Tot	Err	Pts	Tot	Err	Pos%	(Exc%)	Tot	Err	Blo		Pts	Pts%
1 GUEST	☐
2 C REAH	6	.	2	2	+2	2	.	1	1	.	1	100%	.
4 POTES	☐
5 FURSICH	2	5.9	1	.	-1	2	.	.	3	.	67%	.	6	1	1	.	.	1
6 CHADWICK	☐
7 BURTON	4	5.3	.	.	.	1
8 HALLWORTH	3	6.1	1	.	+1	3	3	.	.	1	33%	.
9 HARDING	☐	1	.	.	.	1
10 KOSCIOLEK	5	6	.	.	-4	1	.	.	10	2	60% (20%)	.	7	2
11 L COPESTAKE	☐
12 L KETTLE	☐	.	.	.	-3	.	.	.	7	3	29%
14 WATSON	1	6.3	.	.	-2	1	4	1	1	.	.	.
Team totals			4	2	-7	10	.	1	21	5	48% (10%)	22	4	2	2	9%	1	
Points won:			Ser	Att	Blo	Op	Er											
Set 1			3	10	1	11	24	.	3	21	3	57% (38%)	55	2	1	10	18%	1
Set 2			1	5	1	9	17	1	1	21	2	52% (33%)	28	2	1	5	18%	1
Set 3			1	2	1	6	10	.	1	21	5	48% (10%)	22	4	2	2	9%	1
Head coach GUEST Richard																		
Assistant GUEST Keeley																		

Coventry & W.	Set 3	Vote	Points			Serve			Reception				Attack			BK Pts		
			Tot	BP	W-L	Tot	Err	Pts	Tot	Err	Pos%	(Exc%)	Tot	Err	Blo		Pts	Pts%
4 ANDERSON	5	7.8	2	2	+2	2	.	1	1	1
5 JASTRZEBSKA	2	5.5	1	1	-1	3	1	3	.	1	1	33%	.
6 SENKUTE	4	6.3	7	3	+6	8	1	3	2	.	50% (50%)	7	.	.	4	57%	.	
7 ZANROSSO	3	8.8	.	.	-1	1	1	1
8 L PIETRUNKO	☐	5	.	40% (40%)	
9 GARAJOVA	☐	
10 C SMITH	6	6.2	3	1	+2	5	5	1	.	2	40%	1
12 LOMAX	☐
14 BOSCO	1	5.8	3	3	+1	6	1	1	3	1	33% (33%)	8	.	.	2	25%	.	
Team totals			16	10	+9	25	4	5	10	1	40% (40%)	25	1	1	9	36%	2	
Points won:			Ser	Att	Blo	Op	Er											
Set 1			3	12	1	6	23	.	3	24	3	62% (38%)	55	8	1	12	22%	1
Set 2			2	15	1	7	24	3	2	16	1	69% (50%)	42	4	1	15	36%	1
Set 3			5	9	2	9	25	4	5	10	1	40% (40%)	25	1	1	9	36%	2
Head coach SMITH Alex																		
Assistant																		

Newcastle Staffs Ladies				Coventry & Warwick Ladies						
Points S in Diff	Receptions 21 Points SO 2	KILL ON RECEPTION				Receptions 10 Points SO 6	Points S in Diff			
6 -1	Each 10.5 Recept 1 Point	1st ATTACK AFTER POSITIVE RECEPTION (+#)				Each 1.67 Recept 1 Point	6 +7			
5 -10		Errors	Blo	Pts%	Tot	Tot	Pts%	Blo	Errors	5 .
4 +1		2	0	11%	9	4	75%	0	0	4 +4
3 .		1st ATTACK AFTER NEGATIVE RECEPTION (-!)					3 +4			
2 +2	Serve 10 Points BP 2	Errors	Blo	Pts%	Tot	Tot	Pts%	Blo	Errors	2 .
1 -7	Each 5 Serve 1 Break Point	0	0	0%	2	4	50%	0	0	1 .
		ATTACK ON DIG				Serve 25 Points BP 10				
		Errors	Blo	Pts%	Tot	Tot	Pts%	Blo	Errors	Each 2.5 Serve 1 Break Point
		2	2	9%	11	17	24%	1	1	

BP Break point Pts Points
Err Error Blo Blocked
Pos% Positive +# Exc Excellent
W-L Won - Lost ☐ Starting Setter
☐ Starting line-up
☐ Substitute ○ Starting Srv





National League 2019/2020

1° Day Women 2N

Play 'Castle Volleyball

Match report - Set 4

Newcastle Staffs Ladies 1
Coventry & Warwick Ladies 3

Match	W2N 6	Spectators	
Date	10/12/2019	Receipts	
Time	15.15.00	Hall	Keele University
City	Keele		

Set	Time	Partial score			Score
1	0.33	8-6	16-11	21-20	25-22
2	0.24	6-8	11-16	15-21	16-25
3	0.17	5-8	8-16	9-21	10-25
4	0.20	6-8	11-16	15-21	17-25
1.34					68-97

Referees BOUGHTON John, GRIMES Rita

Newcastle Staffs L.	Set (4)	Vote	Points			Serve			Reception				Attack			BK Pts			
			Tot	BP	W-L	Tot	Err	Pts	Tot	Err	Pos%	(Exc%)	Tot	Err	Blo		Pts	Pts%	
1 GUEST	6	6.2	2	.	.	3	.	.	5	2	20%	.	4	.	.	2	50%	.	
2 C REAH	5	5.5	1	.	-4	1	1	.	5	2	20%	.	6	2	.	1	17%	.	
4 POTES		
5 FURSICH		5.5	1	.	+1	1	.	.	3	.	33%	(33%)	1	.	.	1	100%	.	
6 CHADWICK	1	6.2	4	3	+3	3	8	1	.	4	50%	.	
7 BURTON	4	5.9	2	1	+1	6	1	1	1	.	.	1	100%	.	
8 HALLWORTH	3	5.5	.	.	-1	2	4	.	1	.	.	.	
9 HARDING		
10 KOSCIOLEK	2	6.6	1	.	-1	2	2	.	4	.	100%	(50%)	7	.	.	1	14%	.	
11 L COPESTAKE		
12 L KETTLE		.	.	.	-1	.	.	.	4	1	50%	(25%)	
14 WATSON		
Team totals			11	4	-2	18	4	1	21	5	43%	(19%)	31	3	1	10	32%	.	
Points won:			Ser	Att	Blo	Op	Er												
Set 1			3	10	1	11	24	.	3	21	3	57%	(38%)	55	2	1	10	18%	1
Set 2			1	5	1	9	17	1	1	21	2	52%	(33%)	28	2	1	5	18%	1
Set 3			1	2	1	6	10	.	1	21	5	48%	(10%)	22	4	2	2	9%	1
Set 4			1	10	.	6	18	4	1	21	5	43%	(19%)	31	3	1	10	32%	.
Head coach GUEST Richard																			
Assistant GUEST Keeley																			

Coventry & W.	Set (4)	Vote	Points			Serve			Reception				Attack			BK Pts			
			Tot	BP	W-L	Tot	Err	Pts	Tot	Err	Pos%	(Exc%)	Tot	Err	Blo		Pts	Pts%	
4 ANDERSON	5	6.3	2	1	+1	2	1	1	.	.	1	100%	1	
5 JASTRZEBSKA	2	6.3	3	2	+1	5	2	1	5	.	.	2	40%	.	
6 SENKUTE	4	6.9	2	1	.	4	.	.	7	.	100%	(86%)	7	2	.	2	29%	.	
7 ZANROSSO	3	6.7	4	4	+4	7	.	4	1	.	100%	
8 L PIETRUNKO		4	.	100%	(100%)	
9 GARAJOVA		
10 C SMITH	6	2	1	
12 LOMAX		5.5	.	.	.	2	3	
14 BOSCO	1	6	4	1	+2	2	.	.	1	1	.	.	10	1	.	4	40%	.	
Team totals			15	9	+8	24	3	5	13	1	92%	(77%)	27	3	.	9	33%	1	
Points won:			Ser	Att	Blo	Op	Er												
Set 1			3	12	1	6	23	.	3	24	3	62%	(38%)	55	8	1	12	22%	1
Set 2			2	15	1	7	24	3	2	16	1	69%	(50%)	42	4	1	15	36%	1
Set 3			5	9	2	9	25	4	5	10	1	40%	(40%)	25	1	1	9	36%	2
Set 4			5	9	1	10	24	3	5	13	1	92%	(77%)	27	3	.	9	33%	1
Head coach SMITH Alex																			
Assistant																			

Newcastle Staffs Ladies				Coventry & Warwick Ladies						
Points S in Diff	Receptions 21 Points SO 7	KILL ON RECEPTION				Receptions 13 Points SO 6	Points S in Diff			
6 -2	Each 3 Recept 1 Point	1st ATTACK AFTER POSITIVE RECEPTION (+#)				Each 2.17 Recept 1 Point	6 -2			
5 -1		Errors	Blo	Pts%	Tot	Tot	Pts%	Blo	Errors	5 .
4 -2		1	0	33%	9	12	33%	0	1	4 +1
3 -5		1st ATTACK AFTER NEGATIVE RECEPTION (-!)					3 +1			
2 -2	Serve 18 Points BP 4	Errors	Blo	Pts%	Tot	Tot	Pts%	Blo	Errors	2 +3
1 +4	Each 4.5 Serve 1 Break Point	0	0	50%	4	0	0%	0	0	1 +5
		ATTACK ON DIG				Serve 24 Points BP 9				
		Errors	Blo	Pts%	Tot	Tot	Pts%	Blo	Errors	Each 2.67 Serve 1 Break Point
		2	1	28%	18	15	33%	0	2	

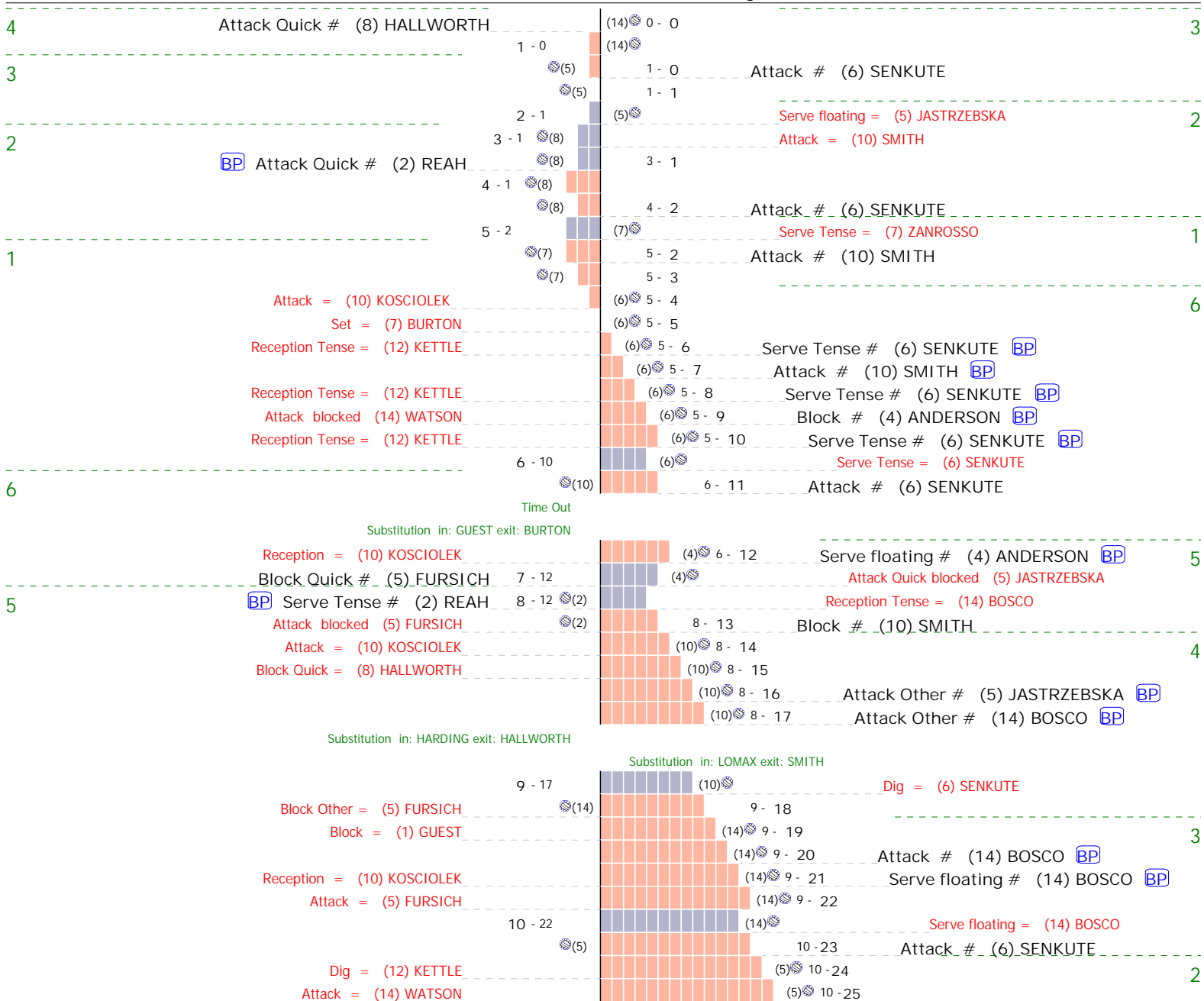
BP Break point Pts Points
Err Error Blo Blocked
Pos% Positive +# Exc Excellent
W-L Won - Lost [n] Starting Setter
[n] Starting line-up
□ Substitute ○ Starting Srv

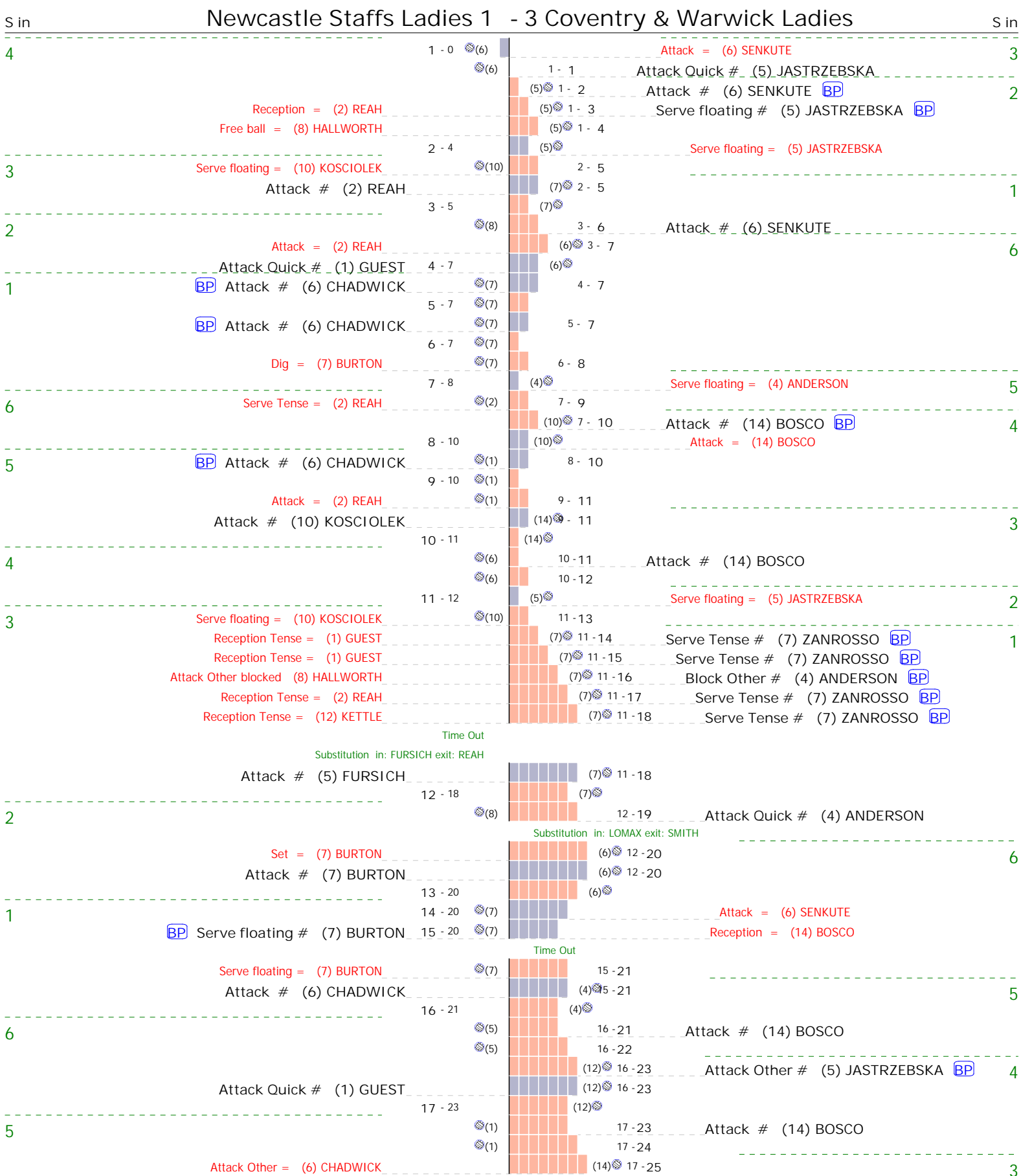


S in	Newcastle Staffs Ladies 1	- 3	Coventry & Warwick Ladies	S in
2		(14) 0 - 1	<u>Won rally on opponent team error</u>	1
	Attack Quick # (2) REAH 1 - 1	(14)		
1		(7) 1 - 2	Attack # (6) SENKUTE	
	<u>Won rally on opponent team error</u>	(9)		3
6		(1) 2 - 3	Attack Tense # (9) GARAJOVA	
	Attack blocked (10) KOSCIOLEK	(7) 2 - 4	Block # (5) JASTRZEBSKA BP	1
	Attack = (14) WATSON	(7) 2 - 5		
	Block # (2) REAH 3 - 5	(7)	Attack blocked (12) LOMAX	
5	BP Attack # (10) KOSCIOLEK	(2) 3 - 5		
	4 - 5 (2)			
	BP Serve Tense # (2) REAH 5 - 5	(2) 5 - 6	Reception Tense = (8) PIETRUNKO	
	Attack # (10) KOSCIOLEK	(2) 5 - 6	Attack Other # (6) SENKUTE	6
	6 - 6	(6)		
4	BP Attack Quick # (8) HALLWORTH 7 - 6	(14) 7 - 6		
	BP Serve Tense # (14) WATSON 8 - 6	(14) 8 - 6	Reception Tense = (14) BOSCO	
	Reception = (10) KOSCIOLEK	(14)		
	Reception = (1) GUEST	(14)		
	9 - 9	(5) 8 - 7	Attack # (12) LOMAX	
3		(5) 8 - 8	Serve floating # (5) JASTRZEBSKA BP	5
	Attack # (1) GUEST	(5) 8 - 9	Serve floating # (5) JASTRZEBSKA BP	
	10 - 10	(5) 9 - 9	Attack = (14) BOSCO	
2		(10) 9 - 10	Attack Quick # (9) GARAJOVA	4
	11 - 10 (8)	(12) 9 - 10		
	12 - 10 (8)	(12)		
	13 - 10 (8)		Attack = (6) SENKUTE	
			Block = (9) GARAJOVA	
			Block = (9) GARAJOVA	
	BP Attack # (2) REAH	(8) 13 - 10		
	BP Serve floating # (8) HALLWORTH 14 - 10	(8) 14 - 10		
	15 - 10 (8)	(8) 15 - 10	Reception = (14) BOSCO	
	16 - 11	(8) 15 - 10	Attack # (14) BOSCO	
1		(14) 16 - 11		
	Attack Tense # (14) WATSON 17 - 12	(7) 16 - 12	Attack = (12) LOMAX	3
	18 - 13	(9) 16 - 12	Attack # (6) SENKUTE	2
6		(1) 17 - 13	Attack Quick # (5) JASTRZEBSKA	
	18 - 14	(7) 17 - 13	Attack = (6) SENKUTE	1
5		(2) 18 - 14	Attack # (6) SENKUTE	
	18 - 14	(6) 18 - 14	Attack # (14) BOSCO BP	6
	18 - 15	(6) 18 - 15		
	Free ball = (10) KOSCIOLEK	(6) 18 - 16		
	Attack Quick # (8) HALLWORTH	(6) 18 - 16		
4		(6) 19 - 16	Attack # (12) LOMAX	
	19 - 16	(14) 19 - 16		
	20 - 17	(14) 19 - 17		
	Attack = (14) WATSON	(5) 20 - 17	Attack = (14) BOSCO	5
3		(10) 20 - 18		
	Reception = (8) HALLWORTH	(12) 20 - 19	Serve floating # (12) LOMAX BP	4
	Set = (7) BURTON	(12) 20 - 20		
	Attack # (10) KOSCIOLEK 21 - 20	(12) 21 - 20		
	Substitution in: CHADWICK exit: HALLWORTH			
2		(6) 21 - 20	Attack # (6) SENKUTE	
	22 - 21	(6) 21 - 21		
1		(14) 22 - 21	Attack = (6) SENKUTE	3
	23 - 21 (7)	(7) 23 - 21	Attack = (6) SENKUTE	
	Dig = (1) GUEST	(7) 23 - 22		
	24 - 22	(9) 24 - 22	Attack = (6) SENKUTE	2
6	BP Attack # (10) KOSCIOLEK 25 - 22	(1) 25 - 22		

S in	Newcastle Staffs Ladies 1	- 3	Coventry & Warwick Ladies	S in
3		0 - 0	Attack Quick # (5) JASTRZEBSKA	3
		0 - 1		
	1 - 1	(5)	Attack = (14) BOSCO	2
2	Block = (7) BURTON	(8)	1 - 2	
	Attack Quick # (2) REAH	2 - 2	(7)	1
1		3 - 2	(7)	
		4 - 2	(7)	
		4 - 3	Attack # (6) SENKUTE	
		5 - 3	Attack = (12) LOMAX	6
6	Attack = (10) KOSCIOLEK	(1)	5 - 4	
			Substitution in: SMITH exit: LOMAX	
	Reception = (12) KETTLE	(9)	5 - 5	Serve floating # (9) GARAJOVA BP
		(9)	Dig = (10) SMITH	5
5		(2)	6 - 6	Attack # (14) BOSCO
	Set = (7) BURTON	(10)	6 - 7	
		(10)	6 - 8	Attack # (6) SENKUTE BP
		(10)	6 - 9	Attack # (10) SMITH BP
		(10)	6 - 10	Attack # (14) BOSCO BP
			Substitution in: FURSICH exit: KOSCIOLEK	
			Substitution in: CHADWICK exit: WATSON	
	Attack Quick # (8) HALLWORTH	(10)	6 - 10	
		(10)	7 - 10	
4	Dig = (5) FURSICH	(14)	7 - 11	
		(14)	7 - 11	Attack # (10) SMITH BP
		(14)	7 - 12	
		(14)	8 - 12	Block = (5) JASTRZEBSKA
3		(5)	8 - 12	Attack # (6) SENKUTE
		(5)	8 - 13	
		(5)	9 - 13	Serve floating = (5) JASTRZEBSKA
2		(8)	9 - 14	Attack # (6) SENKUTE
		(7)	10 - 14	Serve Tense = (7) ZANROSSO
1	Serve floating = (7) BURTON	(7)	10 - 15	
	Attack # (5) FURSICH	(6)	10 - 15	
		(6)	11 - 15	
6	Attack Quick blocked (2) REAH	(1)	11 - 16	Block Quick # (9) GARAJOVA
	Attack # (5) FURSICH	(9)	12 - 16	
5	BP Serve Tense # (2) REAH	(2)	13 - 16	Reception Tense = (6) SENKUTE
	Set = (7) BURTON	(2)	13 - 17	
	Block # (8) HALLWORTH	(10)	14 - 17	Attack blocked (14) BOSCO
4		(6)	14 - 18	Attack # (14) BOSCO
	Attack = (6) CHADWICK	(14)	14 - 19	
			Time Out	
	Attack # (5) FURSICH	(14)	14 - 19	
		(14)	15 - 19	
3		(5)	15 - 19	Attack # (5) JASTRZEBSKA
		(5)	15 - 20	
		(5)	15 - 20	Attack Medium # (6) SENKUTE BP
		(5)	15 - 21	
			Substitution in: POTES exit: GUEST	
		(5)	15 - 22	Attack # (9) GARAJOVA BP
		(5)	15 - 23	Attack Other # (7) ZANROSSO BP
	Reception = (4) POTES	(5)	15 - 24	Serve floating # (5) JASTRZEBSKA BP
		(5)	16 - 24	Serve floating = (5) JASTRZEBSKA
2		(8)	16 - 24	Attack # (9) GARAJOVA
		(8)	16 - 25	

S in Newcastle Staffs Ladies 1 - 3 Coventry & Warwick Ladies S in





Newcastle Staffs Ladies	1	25	16	10	17	68	10/12/20	National League	Women 2N
Coventry & Warwick Ladies	3	22	25	25	25	97	15.15.00	Keele	Home

Analysis selection

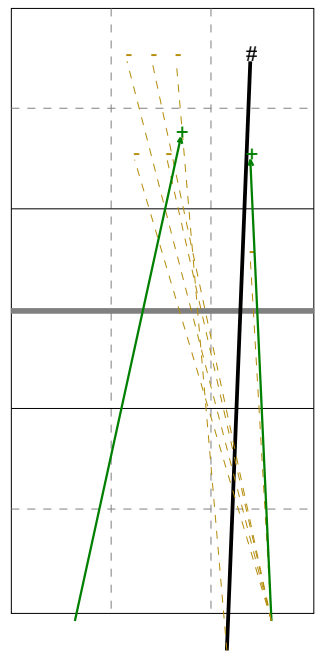
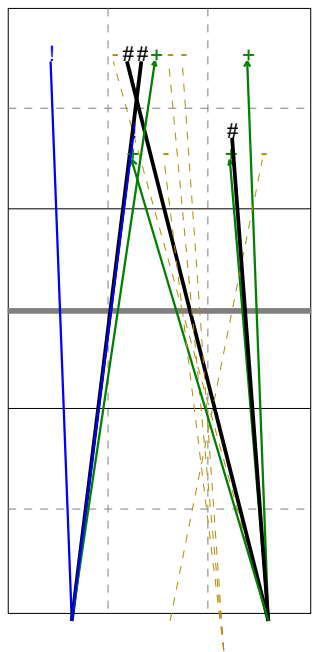
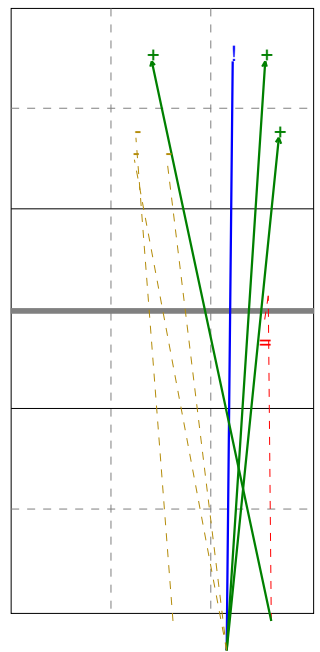
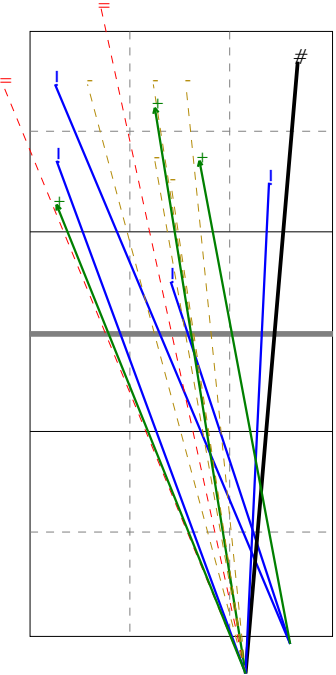
Newcastle Staffs Ladies | Serve | Rotation detail

S1 Ind. *E% N = =% # /
3 53% 15 2 13% 1 0

S6 Ind. *E% N = =% # /
4 50% 8 1 12% 0 0

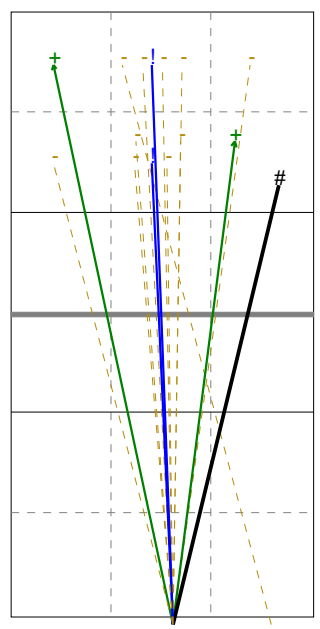
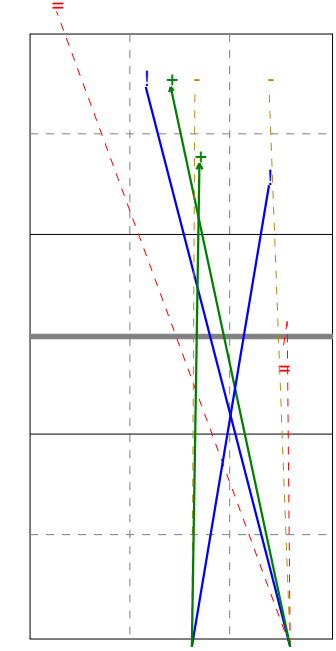
S5 Ind. *E% N = =% # /
6 64% 14 0 0% 3 0

S4 Ind. *E% N = =% # /
5 33% 9 0 0% 1 0



S3 Ind. *E% N = =% # /
3 50% 8 2 25% 0 0

S2 Ind. *E% N = =% # /
4 33% 15 0 0% 1 0



Newcastle Staffs Ladies	1	25	16	10	17	68	10/12/20	National League	Women 2N
Coventry & Warwick Ladies	3	22	25	25	25	97	15.15.00	Keele	Home

Analysis selection

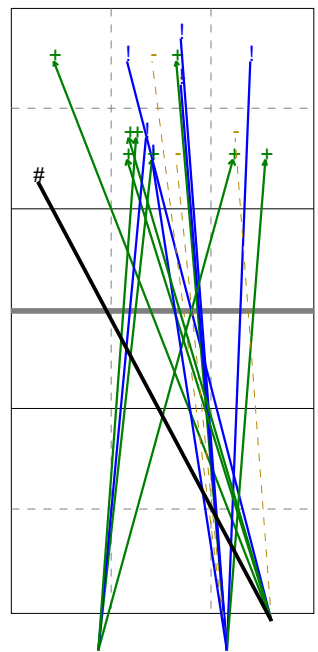
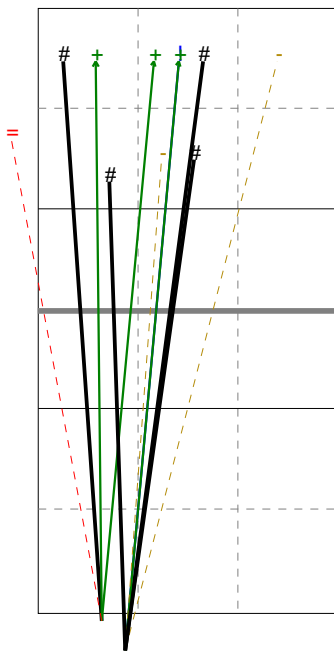
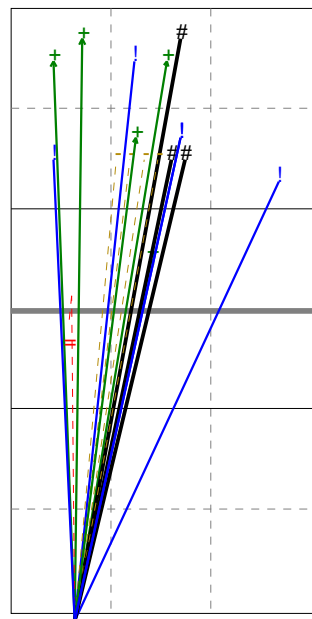
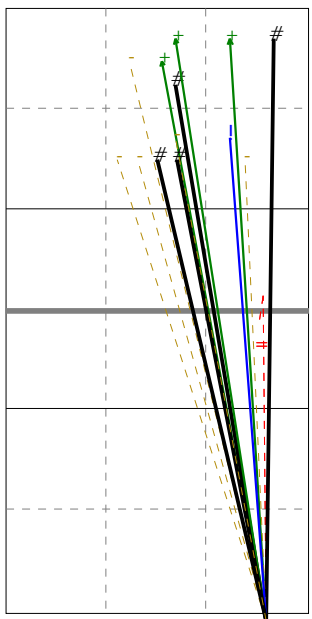
Coventry & Warwick Ladies | Serve | Rotation detail

S1 Ind. *E% N = =% # /
5 53% 15 2 13% 4 0

S6 Ind. *E% N = =% # /
4 72% 18 1 6% 3 0

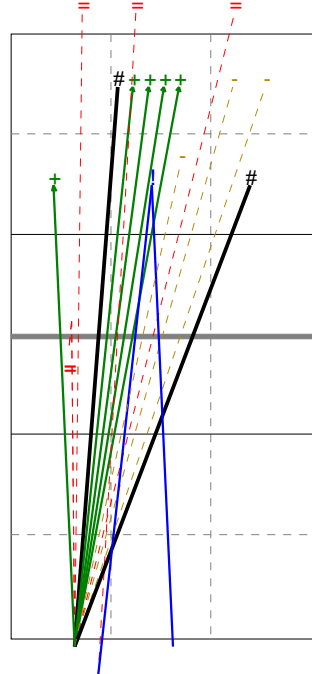
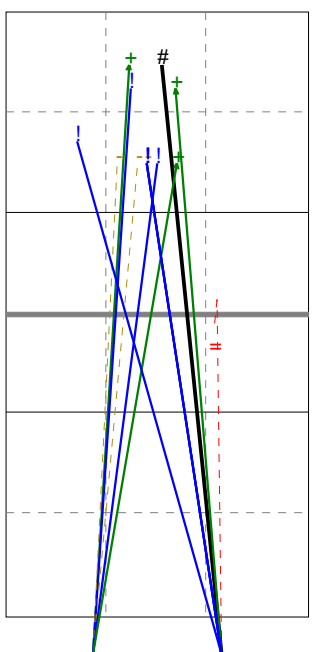
S5 Ind. *E% N = =% # /
6 73% 11 1 9% 4 0

S4 Ind. *E% N = =% # /
4 79% 19 0 0% 1 0



S3 Ind. *E% N = =% # /
3 71% 14 1 7% 1 0

S2 Ind. *E% N = =% # /
4 53% 17 5 29% 2 0



Newcastle Staffs Ladies	1	25	16	10	17	68	10/12/20	National League	Women 2N
Coventry & Warwick Ladies	3	22	25	25	25	97	15.15.00	Keele	Home

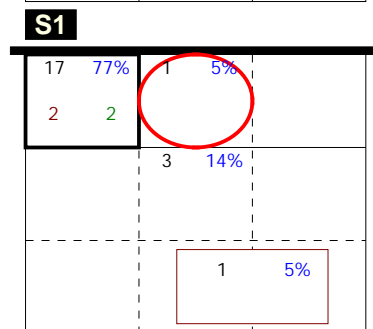
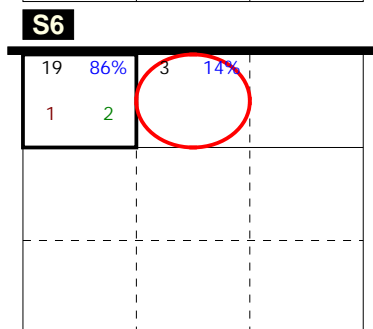
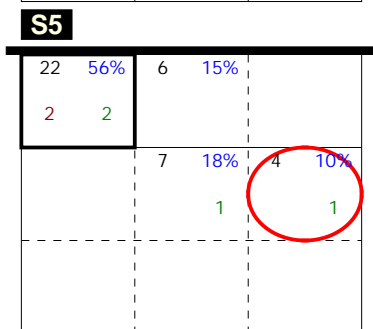
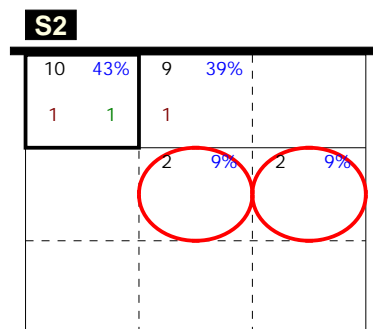
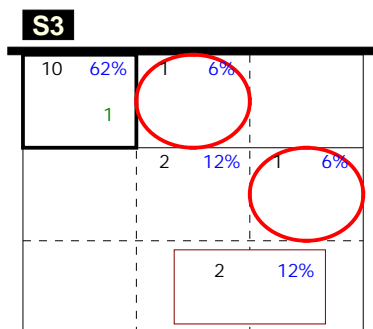
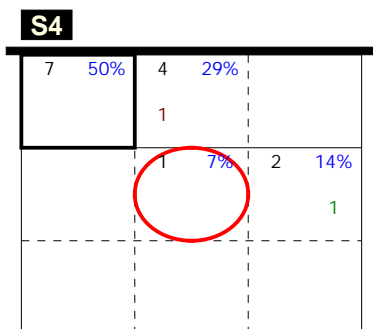
	Total	3	2	1	0	index
Newcastle Staffs L.	84	21	21	27	15	1.57
1 GUEST	19	7	4	5	3	1.79
2 REAH	5	0	1	2	2	0.80
4 POTES	2	1	0	0	1	1.50
5 FURSICH	6	1	2	3	0	1.67
6 CHADWICK	0	0	0	0	0	----
7 BURTON	0	0	0	0	0	----
8 HALLWORTH	1	0	0	0	1	0.00
9 HARDING	1	0	0	1	0	1.00
10 KOSCIOLEK	26	8	8	7	3	1.81
11 COPESTAKE	0	0	0	0	0	----
12 KETTLE	24	4	6	9	5	1.38
14 WATSON	0	0	0	0	0	----

	Total	3	2	1	0	index
Coventry & W.	63	31	11	15	6	2.06
4 ANDERSON	0	0	0	0	0	----
5 JASTRZEBSKA	0	0	0	0	0	----
6 SENKUTE	32	18	7	6	1	2.31
7 ZANROSSO	1	0	1	0	0	2.00
8 PIETRUNKO	14	9	0	4	1	2.21
9 GARAJOVA	0	0	0	0	0	----
10 SMITH	0	0	0	0	0	----
12 LOMAX	0	0	0	0	0	----
14 BOSCO	16	4	3	5	4	1.44

Newcastle Staffs Ladies	1	25	16	10	17	68	10/12/20	National League	Women 2N
Coventry & Warwick Ladies	3	22	25	25	25	97	15.15.00	Keele	Home

Analysis selection

Newcastle Staffs Ladies | Attack | Rotation detail



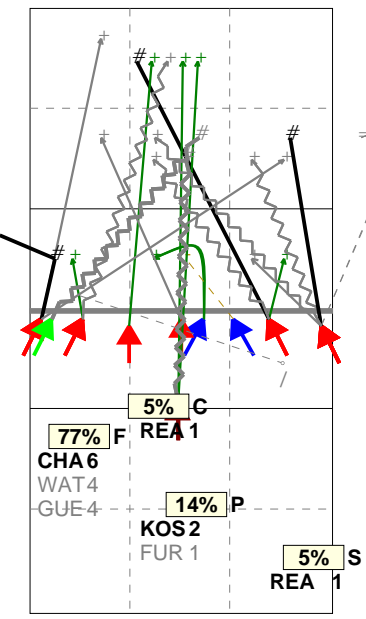
Total events Total events %
 Break Points won Break Points lost

Newcastle Staffs Ladies	1	25	16	10	17	68	10/12/20	National League	Women 2N
Coventry & Warwick Ladies	3	22	25	25	25	97	15.15.00	Keele	Home

Analysis selection

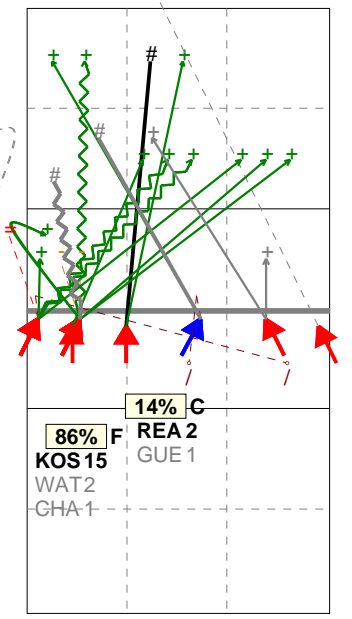
Newcastle Staffs Ladies | Attack | Rotation detail

S1 Ind. *E% N # #% = /
6 14% 22 5 23% 1 1



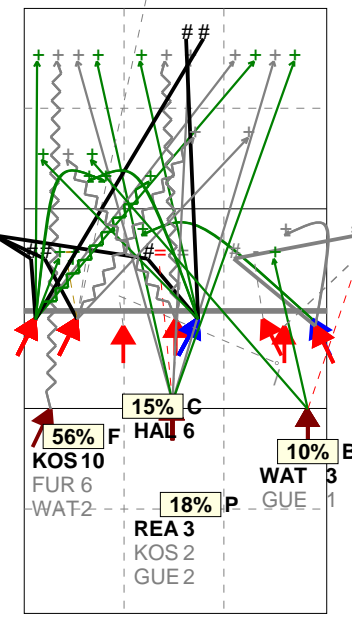
H: 64%(14) P: 27%(6) T: 9%(2)

S6 Ind. *E% N # #% = /
5 -5% 22 3 14% 2 2



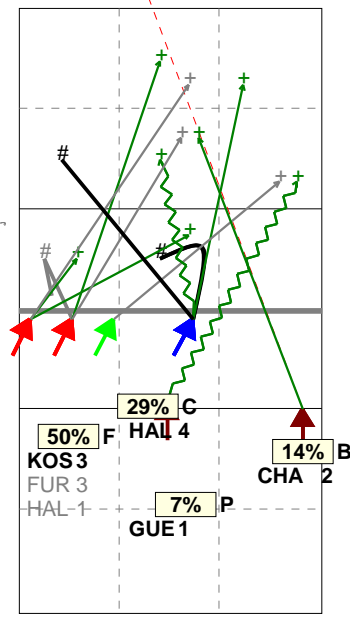
H: 77%(17) P: 18%(4) T: 5%(1)

S5 Ind. *E% N # #% = /
5 . 39 6 15% 5 1



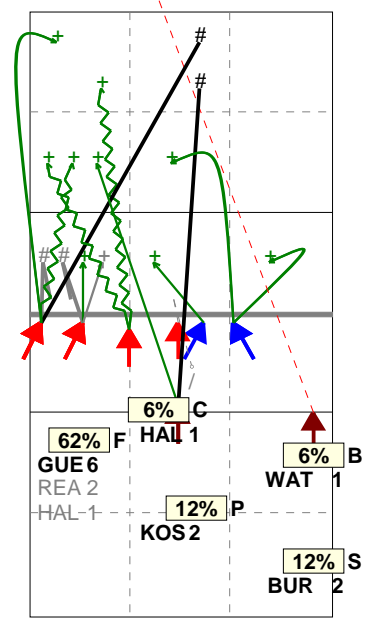
H: 74%(29) P: 13%(5) T: 13%(5)

S4 Ind. *E% N # #% = /
6 14% 14 3 21% 1 0



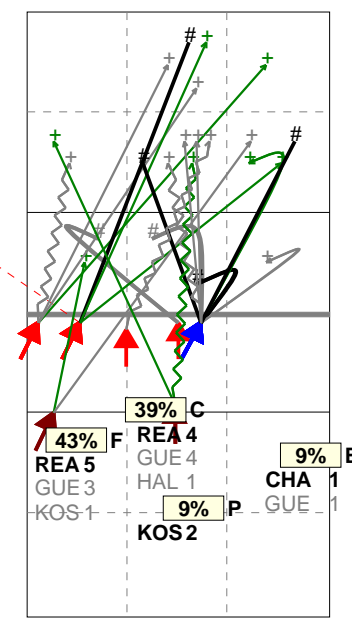
H: 79%(11) P: 14%(2) T: 7%(1)

S3 Ind. *E% N # #% = /
6 12% 16 4 25% 1 1



H: 62%(10) P: 19%(3) T: 19%(3)

S2 Ind. *E% N # #% = /
6 22% 23 6 26% 1 0



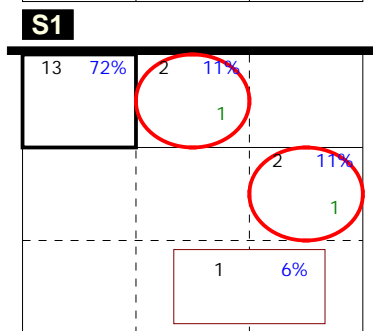
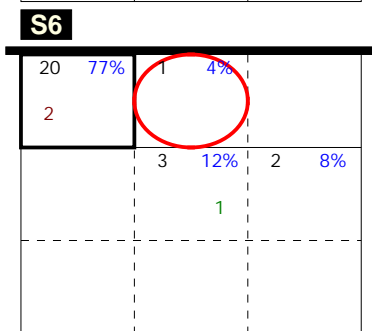
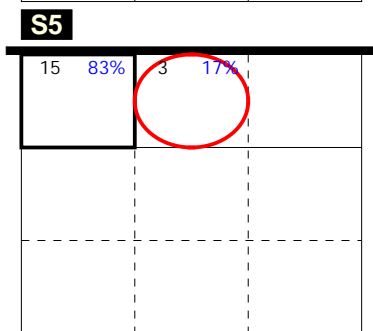
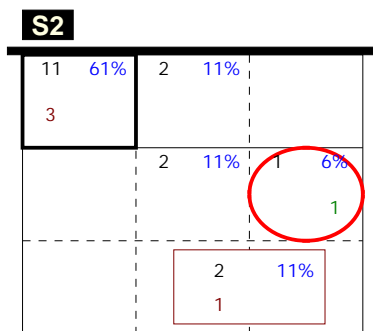
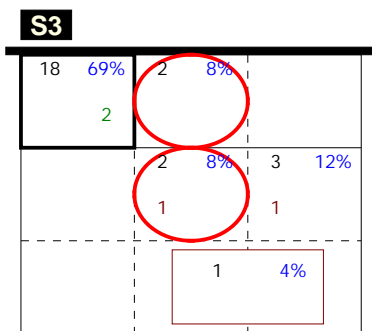
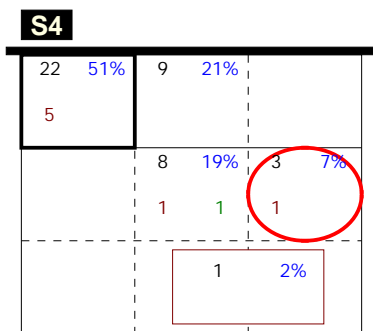
H: 61%(14) P: 17%(4) T: 22%(5)

Legend: = (red circle), / (red circle), O (white circle), ▲ (yellow triangle), ▼ (blue triangle), ▲ (green triangle), # (black square), Tip (dashed line), Soft (wavy line)

Newcastle Staffs Ladies	1	25	16	10	17	68	10/12/20	National League	Women 2N
Coventry & Warwick Ladies	3	22	25	25	25	97	15.15.00	Keele	Home

Analysis selection

Coventry & Warwick Ladies | Attack | Rotation detail



Total events Total events %
 Break Points won Break Points lost

Newcastle Staffs Ladies	1	25	16	10	17	68	10/12/20	National League	Women 2N
Coventry & Warwick Ladies	3	22	25	25	25	97	15.15.00	Keele	Home

Analysis selection

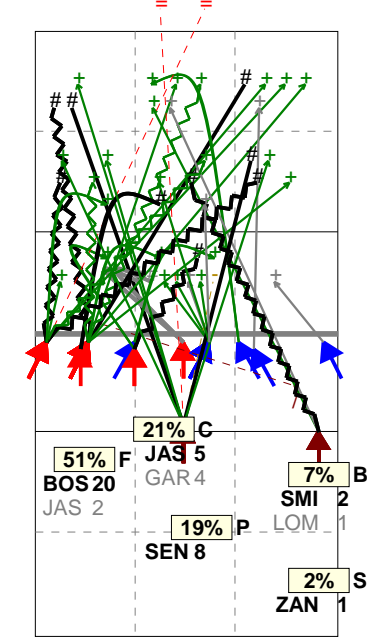
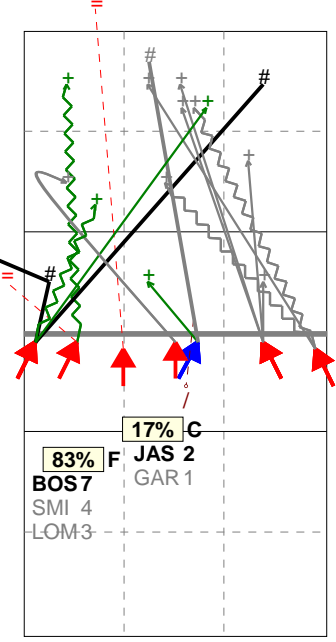
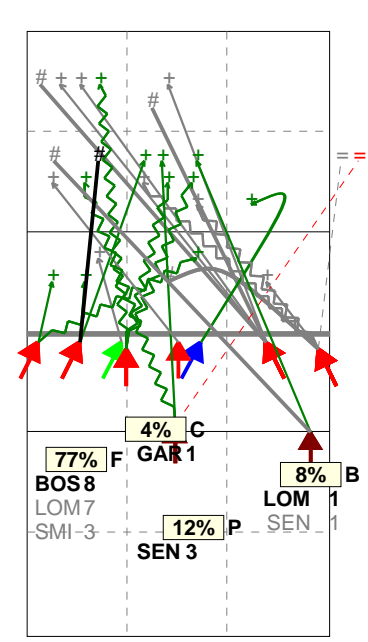
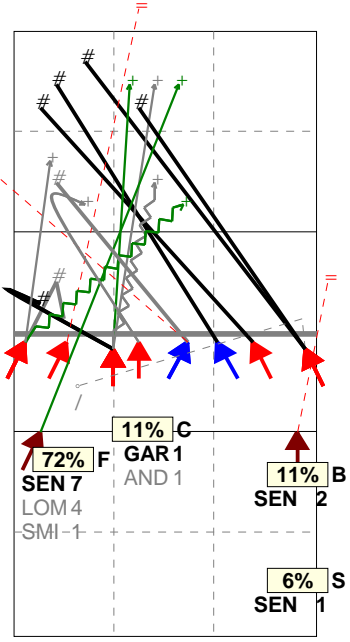
Coventry & Warwick Ladies | Attack | Rotation detail

S1 Ind. *E% N # #% = /
6 17% 18 7 39% 3 1

S6 Ind. *E% N # #% = /
6 12% 26 5 19% 2 0

S5 Ind. *E% N # #% = /
5 18 3 17% 2 1

S4 Ind. *E% N # #% = /
6 19% 43 11 26% 2 1



H: 78%(14) P: 11%(2) T: 11%(2)

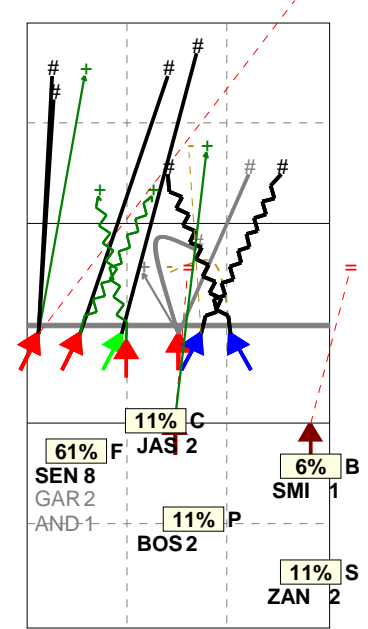
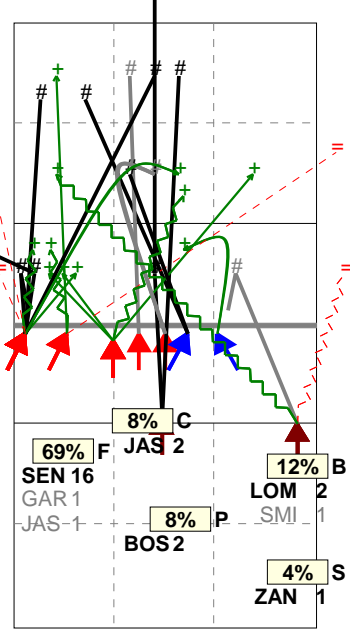
H: 65%(17) P: 27%(7) T: 8%(2)

H: 72%(13) P: 22%(4) T: 6%(1)

H: 63%(27) P: 19%(8) T: 19%(8)

S3 Ind. *E% N # #% = /
6 27% 26 11 42% 4 0

S2 Ind. *E% N # #% = /
6 28% 18 8 44% 3 0



H: 69%(18) P: 19%(5) T: 12%(3)

H: 67%(12) P: 22%(4) T: 11%(2)

Legend: = (red circle), / (red circle), # (black square), Tip (solid line), Soft (wavy line), (yellow triangle), (blue triangle), (green triangle), (black square).