



National League 2019/2020

1° Day Women's D2N

Play 'Castle Volleyball

Match report

Newcastle Staffs Ladies 2
Leicester Athena 3

Match	23	Spectators	
Date	11/23/2019	Receipts	
Time	14.45.00	Hall	Keele University
City	Newcastle-u-Lyme		
Referees GILLIBRAND Adam, PITTS Matthew			

Set	Time	Partial score			Score
1	0.20	8-5	16-15	21-17	25-18
2	0.25	7-8	16-13	18-21	19-25
3	0.19	8-4	16-8	21-13	25-15
4	0.19	4-8	11-16	12-21	13-25
5	0.15	2-5	8-10	8-12	10-15
		1.38			92-98

Newcastle Staffs L.	Set					Vote	Points			Serve		Pts	Reception				Attack			BK Pts				
	1	2	3	4	5		Tot	BP	W-L	Tot	Err		Tot	Err	Pos%	(Exc%)	Tot	Err	Blo		Pts	Pts%		
1 GUEST						100%			
2 C REAH	6	3	6	3	6	6.2	17	11	+8	14	3	5	1	.	100%	.	23	4	2	9	39%			
5 FURSICH	2	5	2	5	2	5.6	5	3	-7	22	1	2	25	4	40%	(8%)	29	5	2	3	10%			
7 BURTON	1	4	1	4	1	5.5	.	.	-4	9	2	.	1	.	.	.	13	2	.	.	.			
8 HALLWORTH	3	6	3	6	3	6	9	3	+4	14	3	1	25	1	1	5	20%			
10 KOSCIOLEK	5	2	5	2	5	6.1	9	6	+2	16	2	2	25	1	80%	(48%)	31	3	1	6	19%			
11 L COPESTAKE						.	.	.	-5	.	.	.	31	5	39%	(29%)			
14 WATSON	4	1	4	1	4	5.5	5	3	-3	17	4	2	17	4	.	2	12%			
Team totals							45	26	-5	92	15	12	84	10	52%	(27%)	138	19	6	25	18%	8		
Points won:							Ser	Att	Blo	Op	Er													
Set 1							1	6	3	15			24	3	1	15	2	60%	(33%)	24	5	.	6	25%
Set 2							3	2	.	14			20	3	3	21	1	62%	(48%)	39	2	3	2	5%
Set 3							6	8	4	7			24	4	6	14	1	43%	(7%)	20	1	1	8	40%
Set 4							1	5	1	6			14	4	1	20	4	45%	(20%)	31	5	2	5	16%
Set 5							1	4	.	5			10	1	1	14	2	50%	(21%)	24	6	.	4	17%
Head coach GUEST Richard																								
Assistant GUEST Keeley																								

Leicester Athena	Set					Vote	Points			Serve		Pts	Reception				Attack			BK Pts				
	1	2	3	4	5		Tot	BP	W-L	Tot	Err		Tot	Err	Pos%	(Exc%)	Tot	Err	Blo		Pts	Pts%		
2 LOGAN	1	1	1	1	1	5.9	11	7	+7	15	.	2	29	3	1	8	28%			
3 C BOOTH	2	2	2	2	2	5.4	3	3	.	24	3	3	1			
5 GALLAGHER			5	5		.	1	1	.	7	.	1	3	1	.	.	.			
7 ROMERO	5	5	5	3	3	5.6	8	7	-2	15	2	.	13	4	15%	(15%)	23	2	2	8	35%			
9 SZOLLOSIOVA	6	6	6	6	6	5.5	11	8	+2	8	1	1	21	2	48%	(24%)	43	4	2	10	23%			
10 LANE	3	3	3			5.5	2	1	-9	13	4	1	12	3	58%	(17%)	12	3	1	1	8%			
13 KRZEPTON	4	4	4	4	4	6.1	13	8	+4	15	3	.	3	1	33%	.	19	4	1	8	42%			
18 L HURBODA						.	.	.	-7	.	.	.	28	7	29%	(18%)			
Team totals							49	35	-5	97	13	8	77	17	36%	(18%)	130	17	7	35	27%	6		
Points won:							Ser	Att	Blo	Op	Er													
Set 1							.	4	.	14			18	3	.	21	6	38%	(14%)	22	3	2	4	18%
Set 2							1	14	3	7			24	3	1	17	3	29%	(6%)	42	8	.	14	33%
Set 3							1	6	1	7			16	2	1	20	6	35%	(20%)	22	3	4	6	27%
Set 4							4	7	2	12			24	4	4	10	1	60%	(40%)	24	1	1	7	29%
Set 5							2	4	.	9			15	1	2	9	1	22%	(22%)	20	2	.	4	20%
Head coach MACDONALD G																								
Assistant																								

Newcastle Staffs Ladies				Leicester Athena						
Points S in Diff	Receptions 84 Points SO 19	KILL ON RECEPTION				Receptions 77 Points SO 14	Points S in Diff			
6 +2	Each 4.42 Recept 1 Point	1st ATTACK AFTER POSITIVE RECEPTION (+#)				Each 5.5 Recept 1 Point	6 -1			
5 +4		Errors	Blo	Pts%	Tot	Tot	Pts%	Blo	Errors	5 +2
4 +2		4	2	24%	42	26	27%	1	4	4 +1
3 -1		1st ATTACK AFTER NEGATIVE RECEPTION (-!)					3 +4			
2 -2	Serve 92 Points BP 26	Errors	Blo	Pts%	Tot	Tot	Pts%	Blo	Errors	2 -2
1 -10	Each 3.54 Serve 1 Break Point	4	1	16%	19	21	5%	1	3	1 +1
		ATTACK ON DIG				Serve 97 Points BP 35				
		Errors	Blo	Pts%	Tot	Tot	Pts%	Blo	Errors	Each 2.77 Serve 1 Break Point
		11	3	16%	77	83	33%	5	10	

BP Break point Pts Points
Err Error Blo Blocked
Pos% Positive +# Exc Excellent
W-L Won - Lost [n] Starting Setter
[n] Starting line-up
□ Substitute ○ Starting Srv





National League 2019/2020

1° Day Women's D2N

Play 'Castle Volleyball

Match report - Set 1

Newcastle Staffs Ladies	2
Leicester Athena	3

Match	23	Spectators	
Date	11/23/2019	Receipts	
Time	14.45.00	Hall	Keele University
City	Newcastle-u-Lyme		

Set	Time	Partial score			Score
1	0.20	8-5	16-15	21-17	25-18
0.20					25-18

Referees GILLIBRAND Adam, PITTS Matthew

Newcastle Staffs L.	1	Set	Vote	Points			Serve			Reception				Attack			BK Pts			
				Tot	BP	W-L	Tot	Err	Pts	Tot	Err	Pos%	(Exc%)	Tot	Err	Blo		Pts	Pts%	
1 GUEST				
2 C REAH	6		.	2	2	+2	1	1	.	.	.	2		
5 FURSICH	2		5.6	1	.	-1	11	.	.	.	6	1	50%	(17%)	4	1	.	1	25%	
7 BURTON	1		6.1	.	.	-1	3	1	1	.	.	.		
8 HALLWORTH	3		6.2	4	1	+1	3	2	9	1	.	3	33%		
10 KOSCIOLEK	5		5.8	2	1	+1	1	.	.	.	3	.	67%	(33%)	5	1	.	2	40%	
11 L COPESTAKE			.	.	.	-1	6	1	67%	(50%)	
14 WATSON	4		5.8	1	1	-1	5	1	1	4	1	.	.	.		
Team totals				10	5	.	24	3	1	15	2	60%	(33%)	24	5	.	6	25%	3	
Points won:				Ser	Att	Blo	Op	Er												
Set 1				1	6	3	15	24	3	1	15	2	60%	(33%)	24	5	.	6	25%	3
Head coach GUEST Richard																				
Assistant GUEST Keeley																				

Leicester Athena	1	Set	Vote	Points			Serve			Reception				Attack			BK Pts			
				Tot	BP	W-L	Tot	Err	Pts	Tot	Err	Pos%	(Exc%)	Tot	Err	Blo		Pts	Pts%	
2 LOGAN	1		6	1	.	.	5	4	1	.	1	25%		
3 C BOOTH	2		5	.	.	.	4		
5 GALLAGHER				
7 ROMERO	5		6.3	.	.	-2	2	.	.	.	2	1	.	3	.	1	.	.		
9 SZOLLOSIOVA	6		6	.	.	-3	1	.	.	.	11	2	55%	(18%)	5	1	.	.		
10 LANE	3		5.5	1	.	-3	3	2	.	.	2	1	50%	(50%)	5	.	1	1	20%	
13 KRZEPTON	4		5.7	2	1	-1	3	1	.	.	3	1	33%	.	5	1	.	2	40%	
18 L HURBODA			.	.	.	-1	3	1		
Team totals				4	1	-10	18	3	.	21	6	38%	(14%)	22	3	2	4	18%	.	
Points won:				Ser	Att	Blo	Op	Er												
Set 1				.	4	.	14	18	3	.	21	6	38%	(14%)	22	3	2	4	18%	.
Head coach MACDONALD G																				
Assistant																				

Newcastle Staffs Ladies				Leicester Athena									
Points S in Diff	Receptions 15 Points SO 5	KILL ON RECEPTION				Receptions 21 Points SO 3	Points S in Diff						
6 +3	Each 3 Recept 1 Point	1st ATTACK AFTER POSITIVE RECEPTION (+#)				Each 7 Recept 1 Point	6 -5						
5 .		Errors	Blo	Pts%	Tot	Tot	Pts%	Blo	Errors	5 .			
4 +4		1	0	25%	8	8	12%	0	2	4 .			
3 .		1st ATTACK AFTER NEGATIVE RECEPTION (-!)					3 .						
2 .	Serve 24 Points BP 5	Errors	Blo	Pts%	Tot	Tot	Pts%	Blo	Errors	2 -3			
1 +1	Each 4.8 Serve 1 Break Point	0	0	100%	1	4	25%	0	0	1 .			
				ATTACK ON DIG									
				Errors	Blo	Pts%	Tot	Tot	Pts%	Blo	Errors		
				4	0	20%	15	10	20%	2	1		
								Serve 18 Points BP 1					
								Each 18 Serve 1 Break Point					

BP Break point Pts Points
 Err Error Blo Blocked
 Pos% Positive + # Exc Excellent
 W-L Won - Lost Starting Setter
 Starting line-up
 Substitute Starting Srv

Professional Volleyball Performance Analysis



National League 2019/2020

1° Day Women's D2N

Play 'Castle Volleyball

Match report - Set 2

Newcastle Staffs Ladies	2
Leicester Athena	3

Match	23	Spectators	
Date	11/23/2019	Receipts	
Time	14.45.00	Hall	Keele University
City	Newcastle-u-Lyme		

Set	Time	Partial score			Score
1	0.20	8-5	16-15	21-17	25-18
2	0.25	7-8	16-13	18-21	19-25
0.45					44-43

Referees GILLIBRAND Adam, PITTS Matthew

Newcastle Staffs L.	Set	Vote	Points			Serve			Reception				Attack			BK Pts			
			Tot	BP	W-L	Tot	Err	Pts	Tot	Err	Pos%	(Exc%)	Tot	Err	Blo		Pts	Pts%	
1 GUEST		
2 C REAH	3	5.6	3	2	.	3	.	1	1	.	100%	.	8	1	2	2	25%	.	
5 FURSICH	5	6.1	.	.	-1	2	.	.	4	.	75%	(25%)	9	1	
7 BURTON	4	4.8	.	.	-1	3	1	6	
8 HALLWORTH	6	.	.	.	-1	1	5	.	1	.	.	.	
10 KOSCIOLEK	2	6.9	2	2	+1	8	1	2	7	.	86%	(86%)	8	
11 L COPESTAKE		.	.	.	-1	.	.	.	9	1	33%	(33%)	
14 WATSON	1	5.5	.	.	-1	3	1	3	
Team totals			5	4	-4	20	3	3	21	1	62%	(48%)	39	2	3	2	5%	.	
Points won:			Ser	Att	Blo	Op	Er												
Set 1			1	6	3	15	24	3	1	15	2	60%	(33%)	24	5	.	6	25%	3
Set 2			3	2	.	14	20	3	3	21	1	62%	(48%)	39	2	3	2	5%	.
Head coach GUEST Richard																			
Assistant GUEST Keeley																			

Leicester Athena	Set	Vote	Points			Serve			Reception				Attack			BK Pts			
			Tot	BP	W-L	Tot	Err	Pts	Tot	Err	Pos%	(Exc%)	Tot	Err	Blo		Pts	Pts%	
2 LOGAN	1	6.8	5	4	+4	1	9	1	.	4	44%	1	
3 C BOOTH	2	5.2	.	.	.	4	
5 GALLAGHER		
7 ROMERO	5	6.3	4	4	+3	6	7	1	.	4	57%	.	
9 SZOLLOSIOVA	6	5.6	4	3	+2	1	.	.	3	.	33%	(33%)	14	2	.	4	29%	.	
10 LANE	3	5.5	1	1	-5	7	2	1	5	1	60%	.	7	3	
13 KRZEPTON	4	6.2	4	3	+2	5	1	5	1	.	2	40%	2	
18 L HURBODA		.	.	.	-2	.	.	.	9	2	11%	
Team totals			18	15	+4	24	3	1	17	3	29%	(6%)	42	8	.	14	33%	3	
Points won:			Ser	Att	Blo	Op	Er												
Set 1			.	4	.	14	18	3	.	21	6	38%	(14%)	22	3	2	4	18%	.
Set 2			1	14	3	7	24	3	1	17	3	29%	(6%)	42	8	.	14	33%	3
Head coach MACDONALD G																			
Assistant																			

Newcastle Staffs Ladies				Leicester Athena						
Points S in Diff	Receptions 21 Points SO 1	KILL ON RECEPTION				Receptions 17 Points SO 3	Points S in Diff			
6 +1	Each 21 Recept 1 Point	1st ATTACK AFTER POSITIVE RECEPTION (+#)				Each 5.67 Recept 1 Point	6 +4			
5 .		Errors	Blo	Pts%	Tot	Tot	Pts%	Blo	Errors	5 +2
4 -1		0	2	0%	13	4	25%	0	1	4 +4
3 +1		1st ATTACK AFTER NEGATIVE RECEPTION (-!)					3 .			
2 -2	Serve 20 Points BP 4	Errors	Blo	Pts%	Tot	Tot	Pts%	Blo	Errors	2 .
1 -5	Each 5 Serve 1 Break Point	0	0	0%	5	6	0%	0	2	1 -4
		ATTACK ON DIG				Serve 24 Points BP 15				
		Errors	Blo	Pts%	Tot	Tot	Pts%	Blo	Errors	Each 1.6 Serve 1 Break Point
		2	1	10%	21	32	41%	0	5	

BP Break point Pts Points
 Err Error Blo Blocked
 Pos% Positive +# Exc Excellent
 W-LWon - Lost [n] Starting Setter
 [n] Starting line-up
 □ Substitute ○ Starting Srv





National League 2019/2020

1° Day Women's D2N

Play 'Castle Volleyball

Match report - Set 3

Newcastle Staffs Ladies **2**
Leicester Athena **3**

Match 23 Spectators
Date 11/23/2019 Receipts
Time 14.45.00 Hall Keele University
City Newcastle-u-Lyme

Set	Time	Partial score			Score
1	0.20	8-5	16-15	21-17	25-18
2	0.25	7-8	16-13	18-21	19-25
3	0.19	8-4	16-8	21-13	25-15
1.04					69-58

Referees GILLIBRAND Adam, PITTS Matthew

Newcastle Staffs L.	Set 3	Vote	Points			Serve			Reception				Attack			BK Pts			
			Tot	BP	W-L	Tot	Err	Pts	Tot	Err	Pos%	(Exc%)	Tot	Err	Blo		Pts	Pts%	
1 GUEST		
2 C REAH	6	7.9	7	4	+6	6	1	3	3	.	.	3	100%	1	
5 FURSICH	2	6.3	3	3	+2	4	.	2	5	.	40%	.	7	1	.	1	14%	.	
7 BURTON	1	8	.	.	-1	1	1	
8 HALLWORTH	3	6	3	2	+2	8	1	1	3	2	
10 KOSCIOLEK	5	6.4	3	1	+2	1	.	.	4	.	75%	(25%)	5	.	1	3	60%	.	
11 L COPESTAKE		.	.	.	-1	.	.	.	5	1	20%	
14 WATSON	4	6.7	2	1	+1	4	1	2	.	.	1	50%	1	
Team totals			18	11	+11	24	4	6	14	1	43%	(7%)	20	1	1	8	40%	4	
Points won:			Ser	Att	Blo	Op	Er												
Set 1			1	6	3	15	24	3	1	15	2	60%	(33%)	24	5	.	6	25%	3
Set 2			3	2	.	14	20	3	3	21	1	62%	(48%)	39	2	3	2	5%	.
Set 3			6	8	4	7	24	4	6	14	1	43%	(7%)	20	1	1	8	40%	4
Head coach GUEST Richard																			
Assistant GUEST Keeley																			

Leicester Athena	Set 3	Vote	Points			Serve			Reception				Attack			BK Pts			
			Tot	BP	W-L	Tot	Err	Pts	Tot	Err	Pos%	(Exc%)	Tot	Err	Blo		Pts	Pts%	
2 LOGAN	1	6.6	1	1	+1	2	4	.	.	1	25%	.	
3 C BOOTH	2	5.7	1	1	.	7	1	1	
5 GALLAGHER		
7 ROMERO	5	6	2	2	-2	1	.	.	4	2	.	.	4	1	1	2	50%	.	
9 SZOLLOSJOVA	6	5.5	1	.	-2	2	1	.	3	.	33%	(33%)	9	.	2	1	11%	.	
10 LANE	3	5.5	.	.	-1	3	.	.	5	1	60%	(20%)	
13 KRZEPTON	4	6	3	1	.	1	5	2	1	2	40%	1	
18 L HURBODA		.	.	.	-3	.	.	.	8	3	38%	(25%)	
Team totals			8	5	-7	16	2	1	20	6	35%	(20%)	22	3	4	6	27%	1	
Points won:			Ser	Att	Blo	Op	Er												
Set 1			.	4	.	14	18	3	.	21	6	38%	(14%)	22	3	2	4	18%	.
Set 2			1	14	3	7	24	3	1	17	3	29%	(6%)	42	8	.	14	33%	3
Set 3			1	6	1	7	16	2	1	20	6	35%	(20%)	22	3	4	6	27%	1
Head coach MACDONALD G																			
Assistant																			

Newcastle Staffs Ladies				Leicester Athena						
Points S in Diff	Receptions 14 Points SO 7	KILL ON RECEPTION				Receptions 20 Points SO 3	Points S in Diff			
6 -3	Each 2 Recept 1 Point	1st ATTACK AFTER POSITIVE RECEPTION (+#)				Each 6.67 Recept 1 Point	6 -3			
5 +5		Errors	Blo	Pts%	Tot	Tot	Pts%	Blo	Errors	5 .
4 +3		0	0	60%	5	6	33%	0	1	4 -5
3 .		1st ATTACK AFTER NEGATIVE RECEPTION (-!)					3 +1			
2 +4	Serve 24 Points BP 11	Errors	Blo	Pts%	Tot	Tot	Pts%	Blo	Errors	2 -2
1 +1	Each 2.18 Serve 1 Break Point	1	1	33%	6	6	0%	1	1	1 -1
		ATTACK ON DIG				Serve 16 Points BP 5				
		Errors	Blo	Pts%	Tot	Tot	Pts%	Blo	Errors	Each 3.2 Serve 1 Break Point
		0	0	33%	9	10	40%	3	1	

BP Break point Pts Points
Err Error Blo Blocked
Pos% Positive + # Exc Excellent
W-L Won - Lost Starting Setter
 Starting line-up
 Substitute Starting Srv

Professional Volleyball Performance Analysis



National League 2019/2020

1° Day Women's D2N

Play 'Castle Volleyball

Match report - Set 4

Newcastle Staffs Ladies	2
Leicester Athena	3

Match	23	Spectators	
Date	11/23/2019	Receipts	
Time	14.45.00	Hall	Keele University
City	Newcastle-u-Lyme		

Set	Time	Partial score			Score
1	0.20	8-5	16-15	21-17	25-18
2	0.25	7-8	16-13	18-21	19-25
3	0.19	8-4	16-8	21-13	25-15
4	0.19	4-8	11-16	12-21	13-25
1.23					82-83

Referees GILLIBRAND Adam, PITTS Matthew

Newcastle Staffs L.	Set (4)	Vote	Points			Serve			Reception				Attack			BK Pts			
			Tot	BP	W-L	Tot	Err	Pts	Tot	Err	Pos%	(Exc%)	Tot	Err	Blo		Pts	Pts%	
1 GUEST																			
2 C REAH	3	5.5	1		-2	2	2							4	1		1	25%	
5 FURSICH	5	5.5	1		-5	3			8	3	25%			7	1	2	1	14%	
7 BURTON	4	5.8				2			1					3					
8 HALLWORTH	6	5.9	1		+1	1								4			1	25%	
10 KOSCIOLEK	2	6.3	2	2	-1	2	1		6		83%	(50%)		9	2		1	11%	
11 L COPESTAKE					-1				5	1	40%	(20%)							
14 WATSON	1	5.5	2	1		4	1	1						4	1		1	25%	
Team totals			7	3	-8	14	4	1	20	4	45%	(20%)		31	5	2	5	16%	1
Points won:			Ser	Att	Blo	Op	Er												
Set 1			1	6	3	15			15	2	60%	(33%)		24	5		6	25%	3
Set 2			3	2		14			20	3	62%	(48%)		39	2	3	2	5%	
Set 3			6	8	4	7			14	1	43%	(7%)		20	1	1	8	40%	4
Set 4			1	5	1	6			20	4	45%	(20%)		31	5	2	5	16%	1
Head coach GUEST Richard																			
Assistant GUEST Keeley																			

Leicester Athena	Set (4)	Vote	Points			Serve			Reception				Attack			BK Pts			
			Tot	BP	W-L	Tot	Err	Pts	Tot	Err	Pos%	(Exc%)	Tot	Err	Blo		Pts	Pts%	
2 LOGAN	1	6.3	2	1	+1	2		1						6		1	1	17%	
3 C BOOTH	2	5.7	2	2		7	2	2						1					
5 GALLAGHER	5	5.5	1	1		4		1						2	1				
7 ROMERO	3	6.2	2	1	+1	5	1		3		67%	(67%)		6			2	33%	
9 SZOLLOSIOVA	6	6	3	3	+3	2			4		50%	(25%)		7			3	43%	
10 LANE																			
13 KRZEPTON	4	6.7	3	3	+2	4	1							2			1	50%	
18 L HURBODA					-1				3	1	67%	(33%)							
Team totals			13	11	+6	24	4	4	10	1	60%	(40%)		24	1	1	7	29%	2
Points won:			Ser	Att	Blo	Op	Er												
Set 1				4		14			18	3				22	3	2	4	18%	
Set 2			1	14	3	7			24	3	1	29%	(6%)	42	8		14	33%	3
Set 3			1	6	1	7			16	2	1	20	6	35%	(20%)	22	3	4	27%
Set 4			4	7	2	12			24	4	4	10	1	60%	(40%)	24	1	1	29%
Head coach MACDONALD G																			
Assistant																			

Newcastle Staffs Ladies										Leicester Athena														
Points S in Diff					Receptions 20 Points SO 4					KILL ON RECEPTION					Receptions 10 Points SO 2					Points S in Diff				
6 +1					Each 5 Recept					1st ATTACK AFTER POSITIVE RECEPTION (+#)					Each 5 Recept					6 +3				
5 -1					1 Point					Errors Blo Pts% Tot Tot Pts% Blo Errors					1 Point					5 +2				
4 -3										1 0 33% 9 6 33% 1 0										4 +1				
3 -3										1st ATTACK AFTER NEGATIVE RECEPTION (-!)										3 +1				
2 -2					Serve 14 Points BP 3					Errors Blo Pts% Tot Tot Pts% Blo Errors										2 -				
1 -4					Each 4.67 Serve 1 Break Point					1 0 0% 4 2 0% 0 0										1 +5				
										ATTACK ON DIG														
										Errors Blo Pts% Tot Tot Pts% Blo Errors														
										3 2 11% 18 16 31% 0 1														

BP Break point Pts Points
 Err Error Blo Blocked
 Pos% Positive +# Exc Excellent
 W-LWon - Lost [n] Starting Setter
 [n] Starting line-up
 □ Substitute ○ Starting Srv

Professional Volleyball Performance Analysis



National League 2019/2020

1° Day Women's D2N

Play 'Castle Volleyball

Match report - Set 5

Newcastle Staffs Ladies	2
Leicester Athena	3

Match	23	Spectators	
Date	11/23/2019	Receipts	
Time	14.45.00	Hall	Keele University
City	Newcastle-u-Lyme		

Set	Time	Partial score			Score
1	0.20	8-5	16-15	21-17	25-18
2	0.25	7-8	16-13	18-21	19-25
3	0.19	8-4	16-8	21-13	25-15
4	0.19	4-8	11-16	12-21	13-25
5	0.15	2-5	8-10	8-12	10-15
		1.38			92-98

Referees GILLIBRAND Adam, PITTS Matthew

Newcastle Staffs L.	Set	Vote	Points			Serve			Reception				Attack			BK Pts			
			Tot	BP	W-L	Tot	Err	Pts	Tot	Err	Pos%	(Exc%)	Tot	Err	Blo		Pts	Pts%	
1 GUEST	<input type="checkbox"/>	1	.	100%		
2 C REAH	<input checked="" type="checkbox"/>	7.1	4	3	+2	2	.	1	7	2	.	3	43%		
5 FURSICH	<input checked="" type="checkbox"/>	5.5	.	.	-2	2	1	.	2	.	.	.	2	1	.	.	.		
7 BURTON	<input checked="" type="checkbox"/>	5.2	.	.	-1	3	1	.	.	.		
8 HALLWORTH	<input checked="" type="checkbox"/>	5.9	1	.	+1	1	4	.	.	1	25%		
10 KOSCIOLEK	<input checked="" type="checkbox"/>	6	.	.	-1	4	.	.	5	1	80%	(20%)	4		
11 L COPESTAKE	<input type="checkbox"/>	.	.	.	-1	.	.	.	6	1	33%	(33%)		
14 WATSON	<input checked="" type="checkbox"/>	5.5	.	.	-2	1	4	2	.	.	.		
Team totals			5	3	-4	10	1	1	14	2	50%	(21%)	24	6	.	4	17%		
Points won:			Ser	Att	Blo	Op	Er												
Set 1			1	6	3	15	24	3	1	15	2	60%	(33%)	24	5	.	6	25%	3
Set 2			3	2	.	14	20	3	3	21	1	62%	(48%)	39	2	3	2	5%	.
Set 3			6	8	4	7	24	4	6	14	1	43%	(7%)	20	1	1	8	40%	4
Set 4			1	5	1	6	14	4	1	20	4	45%	(20%)	31	5	2	5	16%	1
Set 5			1	4	.	5	10	1	1	14	2	50%	(21%)	24	6	.	4	17%	.
Head coach GUEST Richard																			
Assistant GUEST Keeley																			

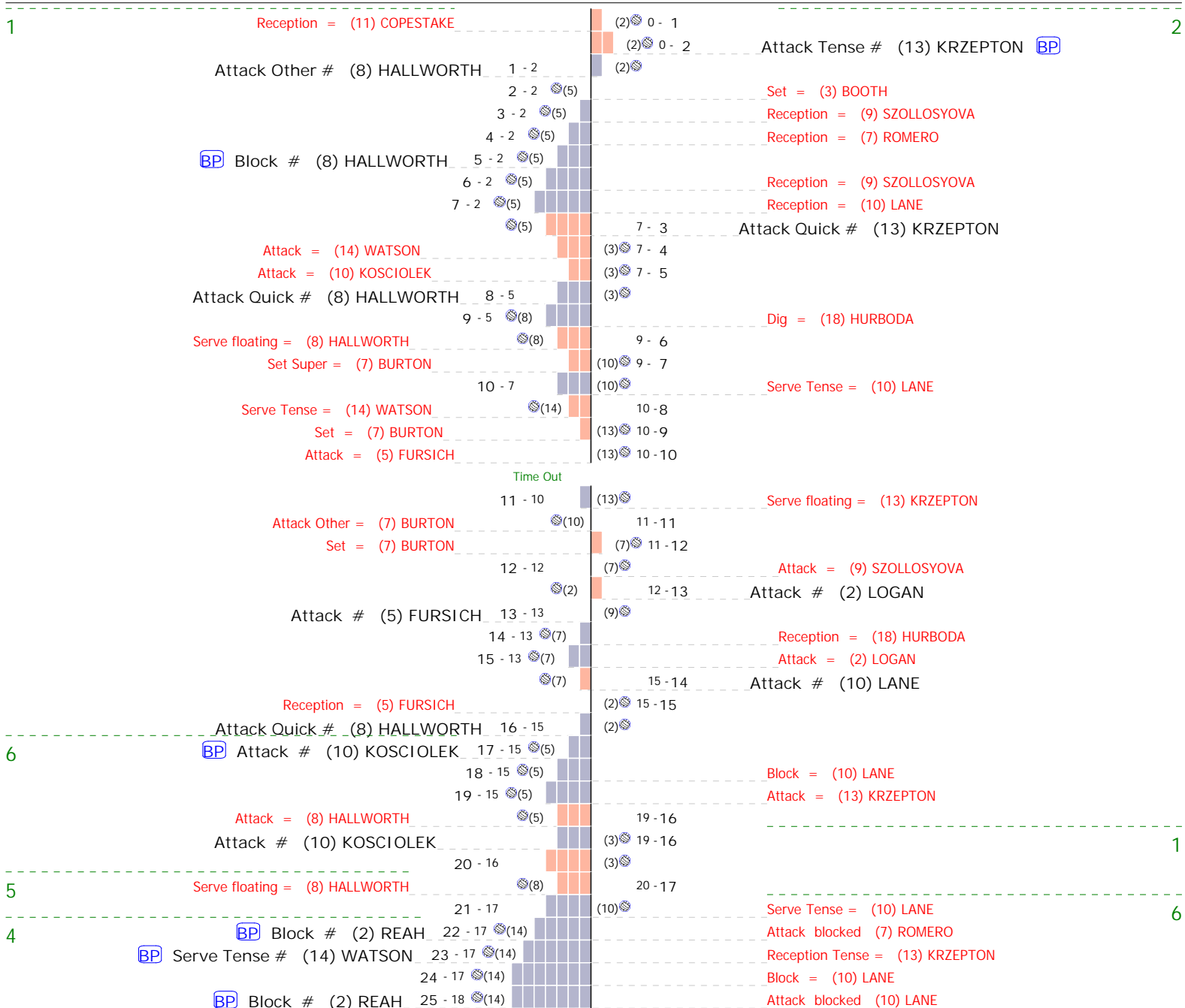
Leicester Athena	Set	Vote	Points			Serve			Reception				Attack			BK Pts			
			Tot	BP	W-L	Tot	Err	Pts	Tot	Err	Pos%	(Exc%)	Tot	Err	Blo		Pts	Pts%	
2 LOGAN	<input checked="" type="checkbox"/>	5.5	2	1	+1	5	.	1	6	1	.	1	17%		
3 C BOOTH	<input checked="" type="checkbox"/>	6.8	.	.	.	2		
5 GALLAGHER	<input checked="" type="checkbox"/>	3	1		
7 ROMERO	<input checked="" type="checkbox"/>	5.5	.	.	-2	1	1	.	4	1	.	.	3		
9 SZOLLOSJOVA	<input checked="" type="checkbox"/>	7.1	3	2	+2	2	.	1	8	1	.	2	25%		
10 LANE	<input type="checkbox"/>		
13 KRZEPTON	<input checked="" type="checkbox"/>	6.5	1	.	+1	2	2	.	.	1	50%		
18 L HURBODA	<input type="checkbox"/>	5	.	40%	(40%)		
Team totals			6	3	+2	15	1	2	9	1	22%	(22%)	20	2	.	4	20%		
Points won:			Ser	Att	Blo	Op	Er												
Set 1			.	4	.	14	18	3	.	21	6	38%	(14%)	22	3	2	4	18%	.
Set 2			1	14	3	7	24	3	1	17	3	29%	(6%)	42	8	.	14	33%	3
Set 3			1	6	1	7	16	2	1	20	6	35%	(20%)	22	3	4	6	27%	1
Set 4			4	7	2	12	24	4	4	10	1	60%	(40%)	24	1	1	7	29%	2
Set 5			2	4	.	9	15	1	2	9	1	22%	(22%)	20	2	.	4	20%	.
Head coach MACDONALD G																			
Assistant																			

Newcastle Staffs Ladies				Leicester Athena						
Points S in Diff	Receptions 14 Points SO 2	KILL ON RECEPTION				Receptions 9 Points SO 3	Points S in Diff			
6 .	Each 7 Recept 1 Point	1st ATTACK AFTER POSITIVE RECEPTION (+#)				Each 3 Recept 1 Point	6 .			
5 .		Errors	Blo	Pts%	Tot	Tot	Pts%	Blo	Errors	5 -2
4 -1		2	0	29%	7	2	50%	0	0	4 +1
3 +1		1st ATTACK AFTER NEGATIVE RECEPTION (-!)					3 +2			
2 -2	Serve 10 Points BP 3	Errors	Blo	Pts%	Tot	Tot	Pts%	Blo	Errors	2 +3
1 -3	Each 3.33 Serve 1 Break Point	2	0	0%	3	3	0%	0	0	1 +1
		ATTACK ON DIG				Serve 15 Points BP 3				
		Errors	Blo	Pts%	Tot	Tot	Pts%	Blo	Errors	Each 5 Serve 1 Break Point
		2	0	14%	14	15	20%	0	2	

BP Break point Pts Points
Err Error Blo Blocked
Pos% Positive +# Exc Excellent
W-L Won - Lost Starting Setter
 Starting line-up
 Substitute Starting Srv

Professional Volleyball Performance Analysis

S in Newcastle Staffs Ladies 2 - 3 Leicester Athena S in

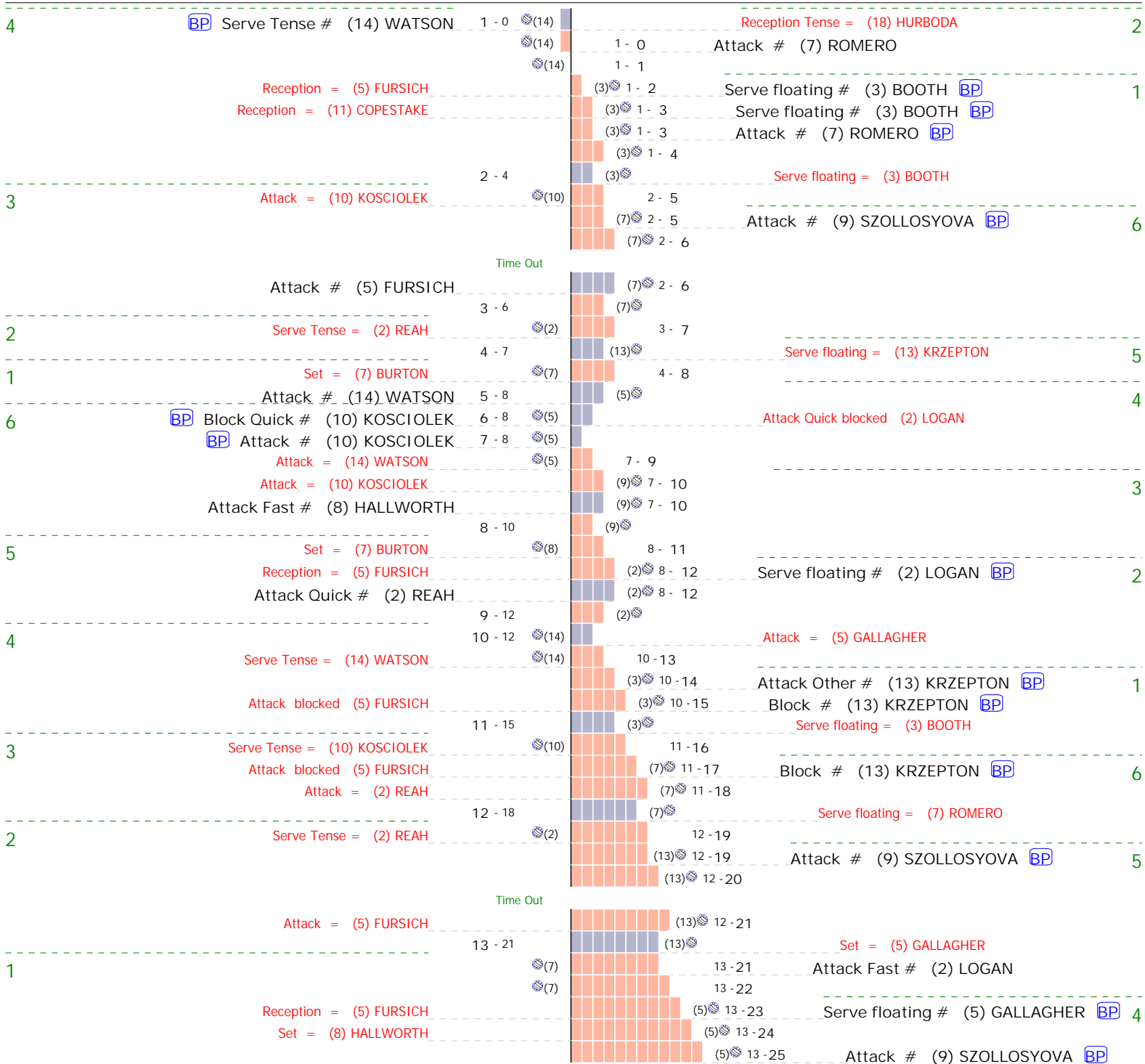


S in	Newcastle Staffs Ladies 2	- 3	Leicester Athena	S in
4	1 - 0 (14)		Attack Fast = (13) KRZEPTON	2
	Attack = (2) REAH		1 - 1	
	Attack Quick blocked (2) REAH		(3) 1 - 2	1
			Block Quick # (13) KRZEPTON (BP)	
3	2 - 2		Dig = (7) ROMERO	
	(BP) Serve floating # (10) KOSCIOLEK		Reception = (18) HURBODA	
	Attack = (5) FURSICH		3 - 3	
	Reception Tense = (11) COPESTAKE		(10) 3 - 4	6
			(10) 3 - 4	
			(10) 3 - 5	
2	4 - 5		Serve Tense = (10) LANE	
	(BP) Serve Tense # (2) REAH		Reception Tense = (10) LANE	
	Set = (7) BURTON		5 - 6	
1	6 - 6		Block = (2) LOGAN	5
	7 - 6 (7)		Free ball = (2) LOGAN	
	(7)		Attack # (9) SZOLLOSZOVA	
	(7)		7 - 6	
			7 - 7	
			(7) 7 - 8	4
			Attack Tense # (2) LOGAN (BP)	
			(7) 7 - 8	
			Attack # (9) SZOLLOSZOVA (BP)	
			(7) 7 - 9	
6	8 - 9		Attack Tense = (2) LOGAN	
	9 - 9 (5)		Attack = (9) SZOLLOSZOVA	
	(5)		Attack Quick # (2) LOGAN	
			Attack = (9) SZOLLOSZOVA	3
5	10 - 10			
	Set = (7) BURTON		10 - 11	
	Attack # (2) REAH		(2) 10 - 11	2
			(2)	
4	11 - 11		11 - 12	
	Serve Tense = (14) WATSON		(3) 11 - 12	1
			Attack # (7) ROMERO (BP)	
			(3) 11 - 13	
			Attack Other = (7) ROMERO	
3	12 - 13		Attack = (10) LANE	
	13 - 13 (10)		Reception Tense = (18) HURBODA	
	(BP) Serve Tense # (10) KOSCIOLEK		Attack = (10) LANE	
	14 - 13 (10)			
	(BP) Attack Quick # (2) REAH		15 - 13 (10)	
	Serve Tense = (10) KOSCIOLEK		Attack = (10) LANE	
			16 - 13 (10)	
			Attack = (10) LANE	
			17 - 13 (10)	
			Attack = (10) LANE	
			17 - 14	
			(10) 17 - 14	6
			Attack # (7) ROMERO (BP)	
			(10) 17 - 15	
			Attack # (7) ROMERO (BP)	
			(10) 17 - 16	
			Block # (13) KRZEPTON (BP)	
			(10) 17 - 17	
	Time Out			
2	18 - 17		Serve Tense = (10) LANE	
	(2)		18 - 18	
			Attack # (13) KRZEPTON	
			(13) 18 - 19	5
			Attack # (9) SZOLLOSZOVA (BP)	
			(13) 18 - 20	
			Attack # (7) ROMERO (BP)	
	Time Out			
			(13) 18 - 21	
			Attack # (9) SZOLLOSZOVA (BP)	
1	19 - 21		Serve floating = (13) KRZEPTON	
	Serve floating = (7) BURTON		19 - 22	
			(7) 19 - 23	4
			Attack Other # (2) LOGAN (BP)	
			(7) 19 - 23	
			Attack Tense # (2) LOGAN (BP)	
			(7) 19 - 24	
			Block # (2) LOGAN (BP)	
			(7) 19 - 25	
	Attack blocked (8) HALLWORTH			

Newcastle Staffs Ladies 2 - 3 Leicester Athena

S in	Player / Action	Score	Count	Player / Action	S in
1	Attack # (14) WATSON	(2) 0 - 0	(2)		2
		1 - 0	(2)		
6	BP Serve floating # (5) FURSICH	2 - 0	(5)	Reception = (7) ROMERO	
	BP Serve floating # (5) FURSICH	3 - 0	(5)	Reception = (7) ROMERO	
	Set = (7) BURTON		(5)		
	Attack blocked (10) KOSCIOLEK				
		3 - 1			
		(3) 3 - 2		Attack # (7) ROMERO BP	1
		(3) 3 - 3		Block # (13) KRZEPTON BP	
			(3)	Serve floating = (3) BOOTH	
5		4 - 3		Attack = (7) ROMERO	
		5 - 3	(8)	Set = (3) BOOTH	
		6 - 3	(8)	Attack Tense = (13) KRZEPTON	
		7 - 3	(8)		
			(8)	Attack Quick # (13) KRZEPTON	
	Attack # (2) REAH		(10)		6
		7 - 4	(10)		
		8 - 4			
4	Serve Tense = (14) WATSON		(14)		
	Attack Quick # (10) KOSCIOLEK	9 - 5	(13)		5
			(10)		
3		9 - 5		Attack # (9) SZOLLOSZOVA	
		9 - 6			
			(7)	Attack blocked (9) SZOLLOSZOVA	4
2	BP Block # (2) REAH	10 - 6		Reception Tense = (10) LANE	
	BP Serve Tense # (2) REAH	11 - 6	(2)	Attack blocked (9) SZOLLOSZOVA	
	BP Block # (8) HALLWORTH	12 - 6	(2)		
				Time Out	
	BP Attack # (5) FURSICH		(2)		
		12 - 6			
		13 - 6	(2)		
	BP Serve Tense # (2) REAH	14 - 6	(2)	Reception Tense = (18) HURBODA	
	BP Serve Tense # (2) REAH	15 - 6	(2)	Reception Tense = (18) HURBODA	
	Serve Tense = (2) REAH		(2)		
		15 - 7			
		(9) 15 - 8		Attack # (2) LOGAN BP	3
		(9)		Serve floating = (9) SZOLLOSZOVA	
1	Serve floating = (7) BURTON	16 - 8	(7)		
	Block Tense # (8) HALLWORTH	17 - 9	(2)	Attack Tense blocked (13) KRZEPTON	2
			(5)		
6		17 - 9		Attack Quick # (13) KRZEPTON	
		17 - 10			
	Set = (7) BURTON		(3)		
	Reception = (11) COPESTAKE		(3)	Serve floating # (3) BOOTH BP	1
		17 - 11			
		17 - 12			
			(3)	Attack # (7) ROMERO BP	
		17 - 13			
	Attack # (10) KOSCIOLEK		(3)		
		18 - 13			
5	BP Block # (14) WATSON	19 - 13	(8)	Attack blocked (7) ROMERO	
	BP Serve floating # (8) HALLWORTH	20 - 13	(8)	Reception = (18) HURBODA	
				Time Out	
		21 - 13	(8)	Set = (9) SZOLLOSZOVA	
	Serve floating = (8) HALLWORTH		(8)		
	Attack = (5) FURSICH				
		21 - 14			
	Attack # (2) REAH		(10)		6
		21 - 15	(10)		
		21 - 15			
			(10)		
4	BP Attack Quick # (2) REAH	22 - 15			
	BP Attack # (10) KOSCIOLEK	23 - 15	(14)		
		24 - 15	(14)		
		25 - 15	(14)	Attack = (13) KRZEPTON	

S in Newcastle Staffs Ladies 2 - 3 Leicester Athena S in



S in	Newcastle Staffs Ladies 2	- 3	Leicester Athena	S in	
1	Reception = (11) COPESTAKE	(2)	0 - 1	Serve floating # (2) LOGAN BP	2
	Attack = (14) WATSON	(2)	0 - 2		
	Attack = (14) WATSON	(2)	0 - 3		
	Set = (7) BURTON	(2)	0 - 4		
	Attack Quick # (8) HALLWORTH	(2)	0 - 4		
			1 - 4		
6		(5)	2 - 4	Attack = (9) SZOLLOSZOVA	
	Serve floating = (5) FURSICH	(5)			
	Set = (7) BURTON	(3)	2 - 5		
		(3)	2 - 6		1
			3 - 6	Set = (3) BOOTH	
5		(8)		Attack Quick # (13) KRZEPTON	
		(8)			
		(7)	3 - 7		
			4 - 7	Serve floating = (7) ROMERO	6
4		(14)		Attack # (9) SZOLLOSZOVA	
	Substitution in: GUEST exit: FURSICH				
		(13)	4 - 8	Attack # (9) SZOLLOSZOVA BP	5
		(13)	4 - 9		
		(13)	5 - 9	Set = (5) GALLAGHER	
	Substitution in: FURSICH exit: GUEST				
3	BP Attack Quick # (2) REAH	(10)	6 - 9		
		(10)	7 - 9	Attack Quick = (2) LOGAN	
	BP Attack Other # (2) REAH	(10)	8 - 9		
	Attack Other = (5) FURSICH	(10)		Time Out	
	Attack Quick = (2) REAH	(5)	8 - 10		4
			8 - 11		
				Time Out	
	Attack = (2) REAH	(5)	8 - 12		
	Attack # (2) REAH	(5)			
2	BP Serve Tense # (2) REAH	(2)	9 - 12	Reception Tense = (7) ROMERO	
		(2)		Attack Tense # (2) LOGAN	
			10 - 13		
	Attack = (7) BURTON	(9)	10 - 14		3
	Reception = (10) KOSCIOLEK	(9)	10 - 15	Serve floating # (9) SZOLLOSZOVA BP	

Newcastle Staffs Ladies	2	25	19	25	13	10	92	11/23/20	National League	Women's D2N
Leicester Athena	3	18	25	15	25	15	98	14.45.00	Newcastle-u-Lyme	

Analysis selection

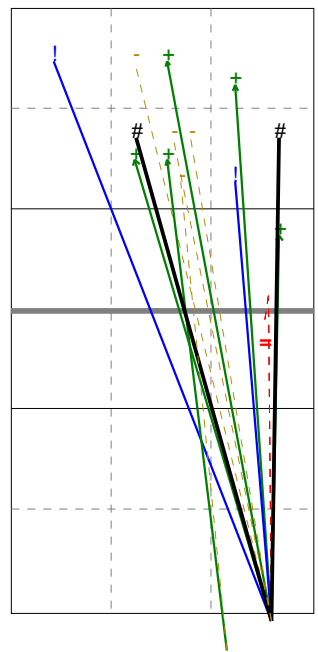
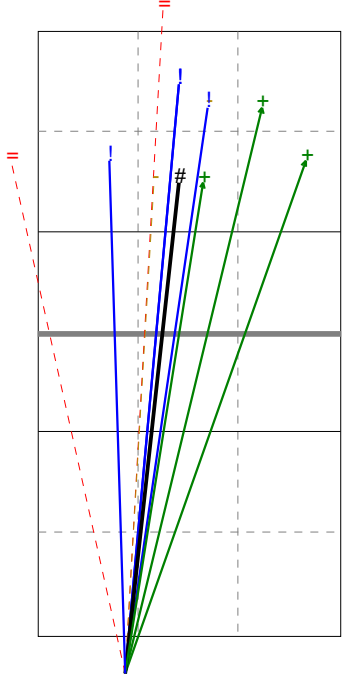
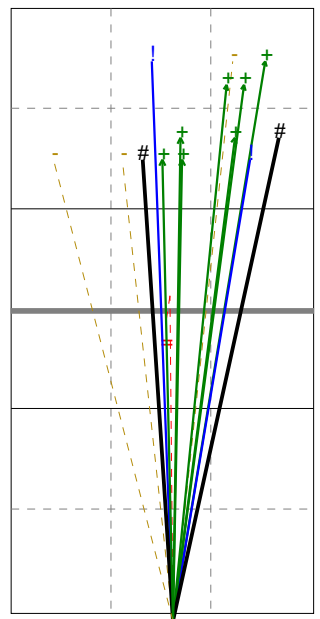
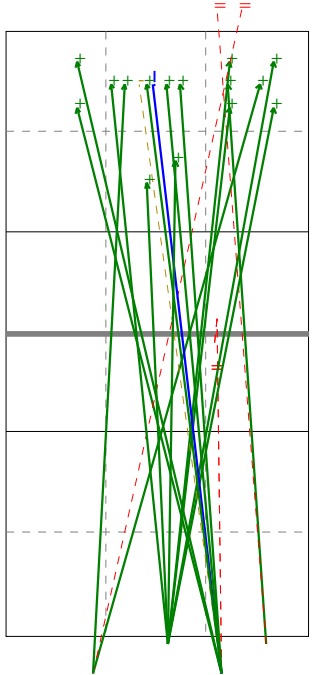
Newcastle Staffs Ladies | Serve | Rotation detail

S1 Ind. *E% N = =% # /
5 76% 21 4 19% 0 0

S6 Ind. *E% N = =% # /
5 73% 15 1 7% 2 0

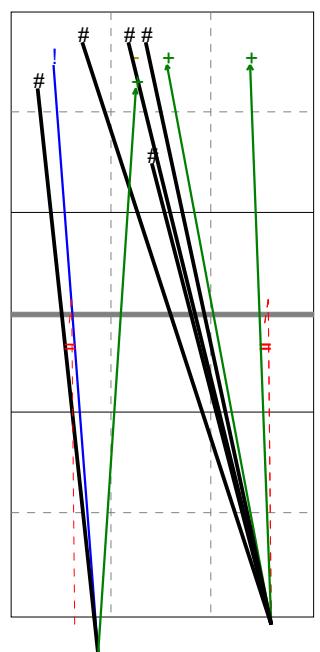
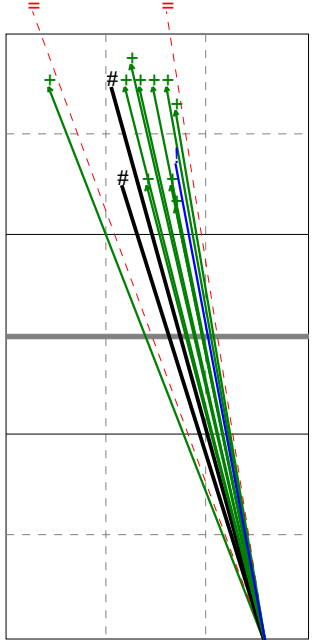
S5 Ind. *E% N = =% # /
3 67% 12 2 17% 1 0

S4 Ind. *E% N = =% # /
4 56% 16 3 19% 2 0



S3 Ind. *E% N = =% # /
6 87% 15 2 13% 2 0

S2 Ind. *E% N = =% # /
6 69% 13 3 23% 5 0



Newcastle Staffs Ladies	2	25	19	25	13	10	92	11/23/20	National League	Women's D2N
Leicester Athena	3	18	25	15	25	15	98	14.45.00	Newcastle-u-Lyme	

Analysis selection

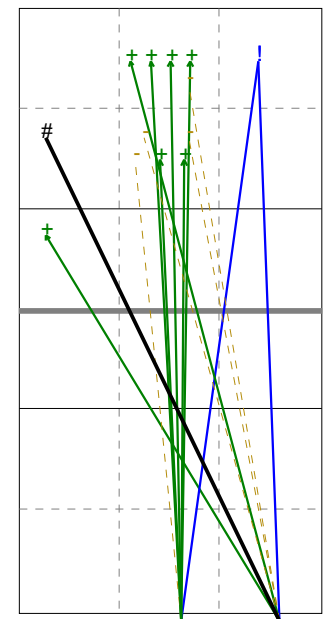
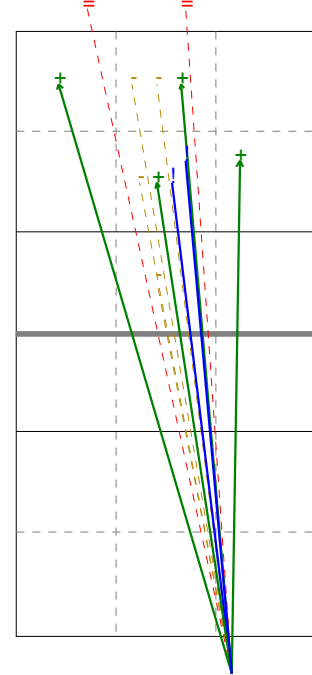
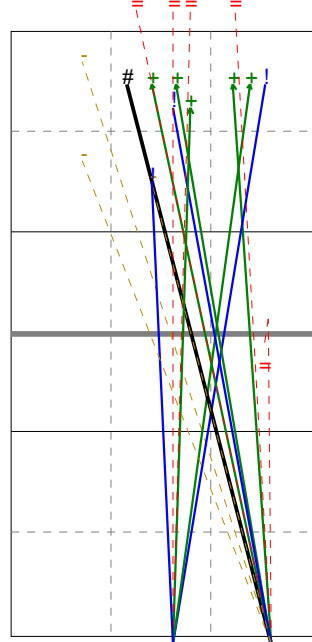
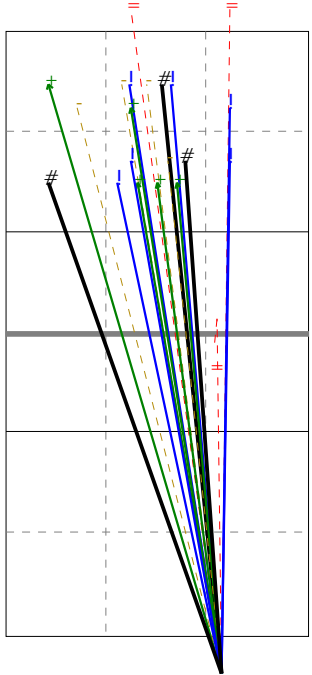
Leicester Athena | Serve | Rotation detail

S1 Ind. *E% N = =% # /
4 67% 21 3 14% 3 0

S6 Ind. *E% N = =% # /
3 53% 17 5 29% 1 0

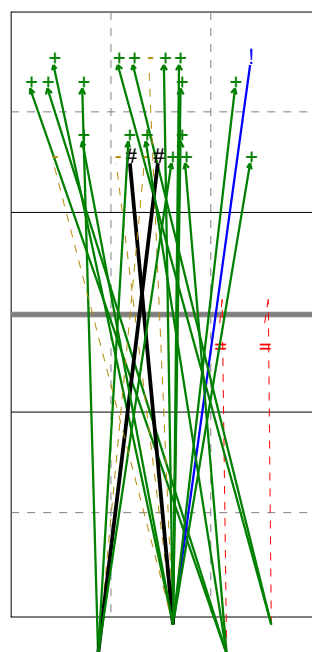
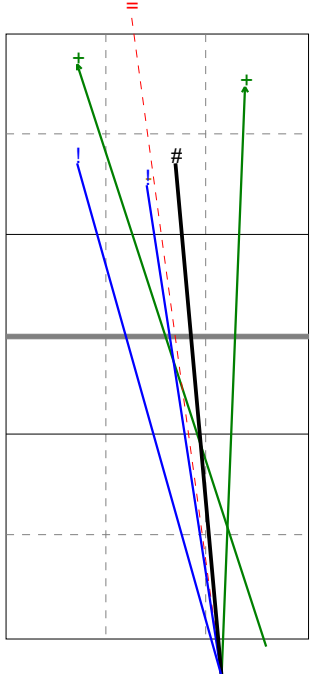
S5 Ind. *E% N = =% # /
4 50% 12 2 17% 0 0

S4 Ind. *E% N = =% # /
5 71% 14 0 0% 1 0



S3 Ind. *E% N = =% # /
4 71% 7 1 14% 1 0

S2 Ind. *E% N = =% # /
6 77% 26 2 8% 2 0



Newcastle Staffs Ladies	2	25	19	25	13	10	92	11/23/20	National League	Women's D2N
Leicester Athena	3	18	25	15	25	15	98	14.45.00	Newcastle-u-Lyme	

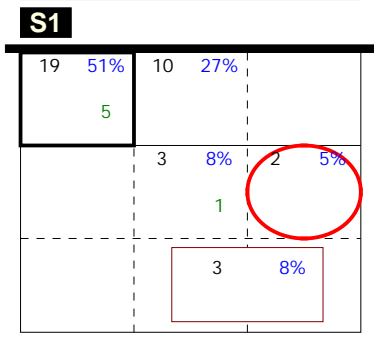
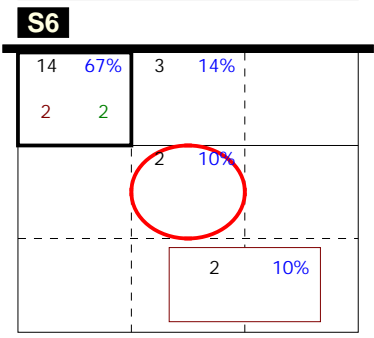
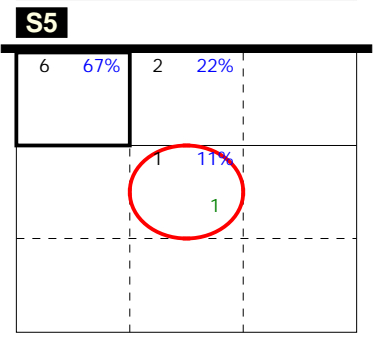
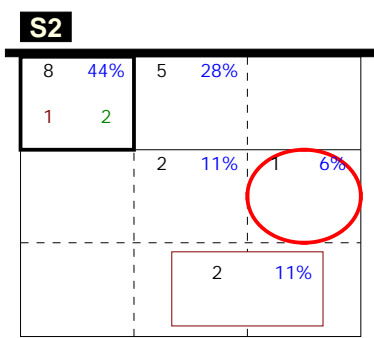
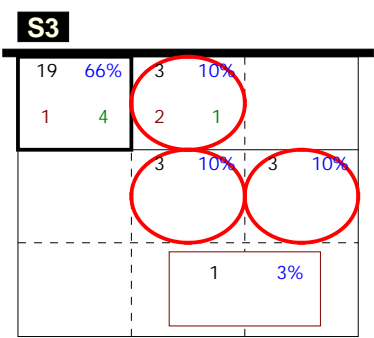
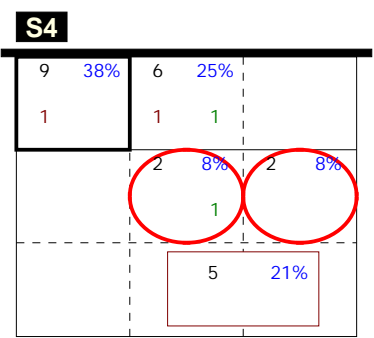
	Total	3	2	1	0	index
Newcastle Staffs L.	84	23	21	30	10	1.68
1 GUEST	1	0	1	0	0	2.00
2 REAH	1	0	1	0	0	2.00
5 FURSICH	25	2	8	11	4	1.32
7 BURTON	1	0	0	1	0	1.00
8 HALLWORTH	0	0	0	0	0	----
10 KOSCIOLEK	25	12	8	4	1	2.24
11 COPESTAKE	31	9	3	14	5	1.52
14 WATSON	0	0	0	0	0	----

	Total	3	2	1	0	index
Leicester Athena	77	14	14	32	17	1.32
2 LOGAN	0	0	0	0	0	----
3 BOOTH	0	0	0	0	0	----
5 GALLAGHER	0	0	0	0	0	----
7 ROMERO	13	2	0	7	4	1.00
9 SZOLLOSZOVA	21	5	5	9	2	1.62
10 LANE	12	2	5	2	3	1.50
13 KRZEPTON	3	0	1	1	1	1.00
18 HURBODA	28	5	3	13	7	1.21

Newcastle Staffs Ladies	2	25	19	25	13	10	92	11/23/20	National League	Women's D2N
Leicester Athena	3	18	25	15	25	15	98	14.45.00	Newcastle-u-Lyme	

Analysis selection

Newcastle Staffs Ladies | Attack | Rotation detail

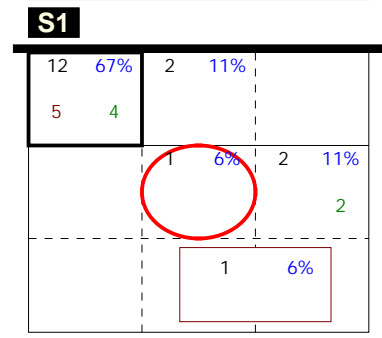
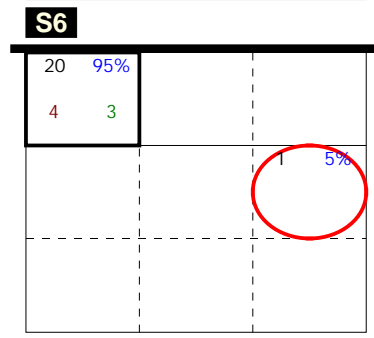
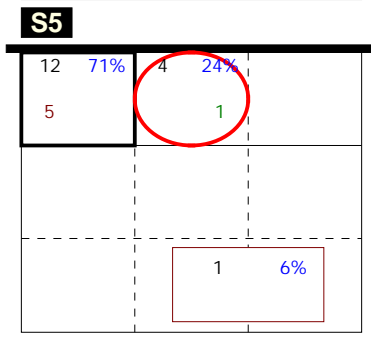
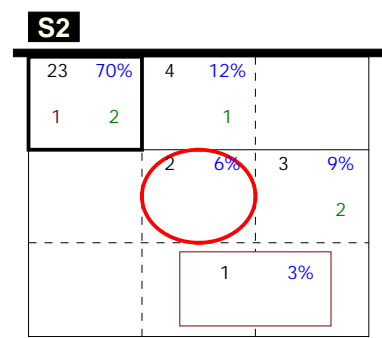
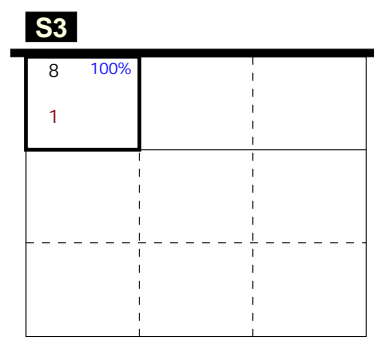
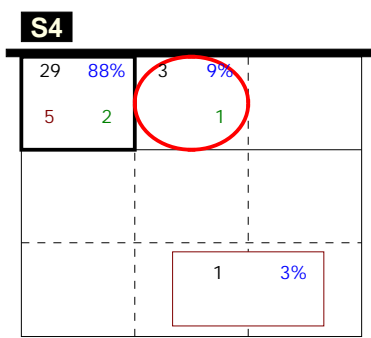


Total events Total events %
 Break Points won Break Points lost

Newcastle Staffs Ladies	2	25	19	25	13	10	92	11/23/20	National League	Women's D2N
Leicester Athena	3	18	25	15	25	15	98	14.45.00	Newcastle-u-Lyme	

Analysis selection

Leicester Athena | Attack | Rotation detail



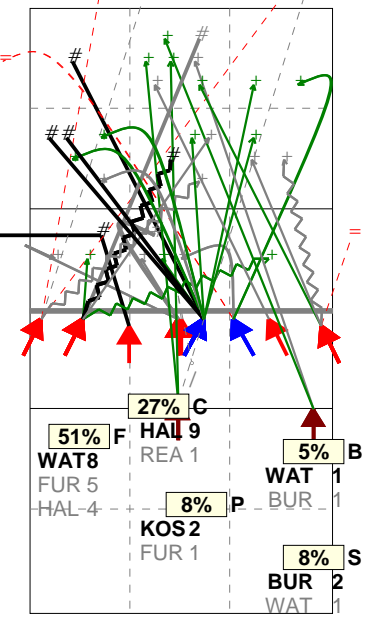
Total events Total events %
 Break Points won Break Points lost

Newcastle Staffs Ladies	2	25	19	25	13	10	92	11/23/20	National League	Women's D2N
Leicester Athena	3	18	25	15	25	15	98	14.45.00	Newcastle-u-Lyme	

Analysis selection

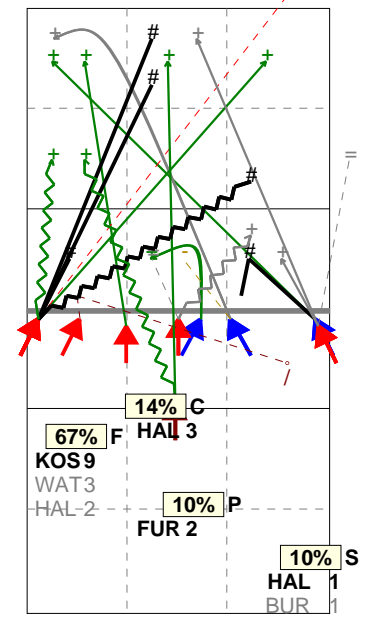
Newcastle Staffs Ladies | Attack | Rotation detail

S1 Ind. *E% N # #% = /
5 . 37 7 19% 6 1



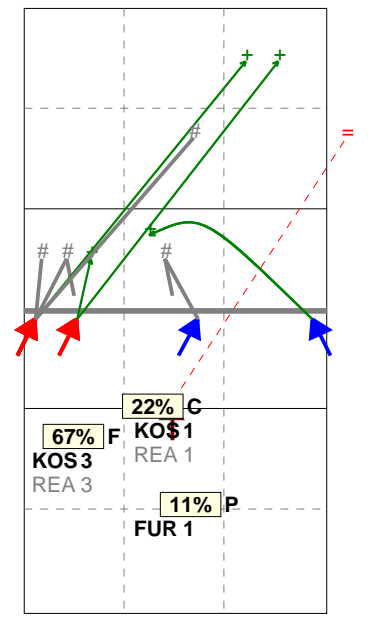
H: 65%(24) P: 11%(4) T: 22%(8)

S6 Ind. *E% N # #% = /
5 5% 21 5 24% 3 1



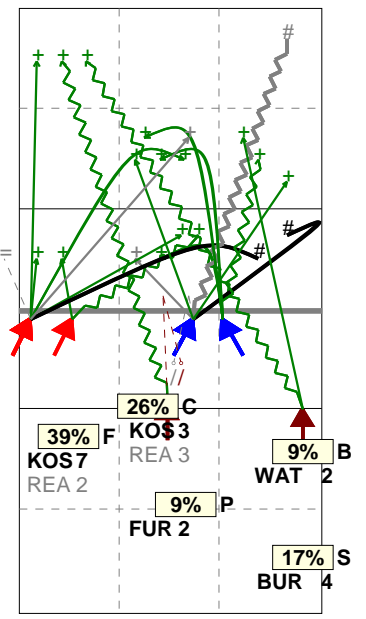
H: 71%(15) P: 19%(4) T: 10%(2)

S5 Ind. *E% N # #% = /
7 33% 9 4 44% 1 0



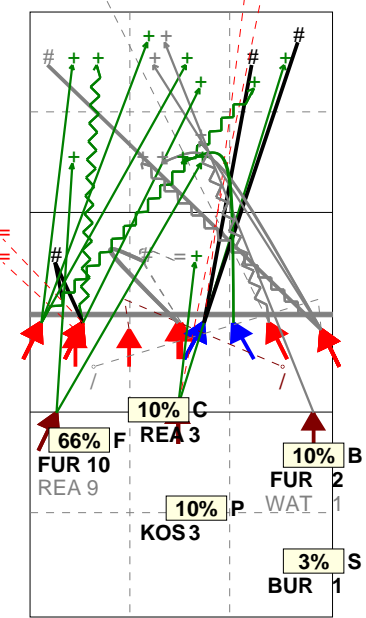
H: 89%(8) P: (0) T: 11%(1)

S4 Ind. *E% N # #% = /
5 . 23 3 13% 1 2



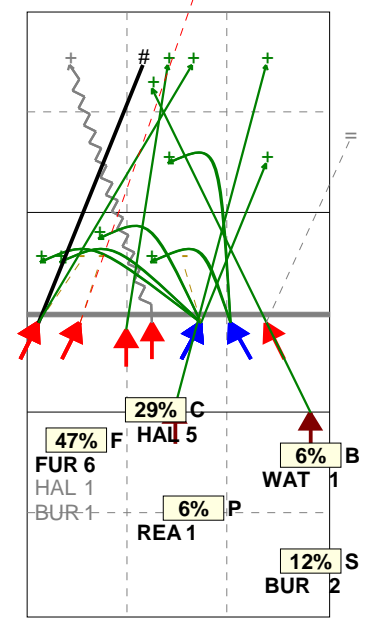
H: 52%(12) P: 22%(5) T: 26%(6)

S3 Ind. *E% N # #% = /
4 -10 29 5 17% 6 2



H: 72%(21) P: 14%(4) T: 14%(4)

S2 Ind. *E% N # #% = /
5 -6% 17 1 6% 2 0



H: 65%(11) P: 6%(1) T: 29%(5)

Legend: = (red circle), / (red circle), (yellow triangle), (blue triangle), (green triangle), # (black square), Tip (solid line), Soft (wavy line)

Newcastle Staffs Ladies	2	25	19	25	13	10	92	11/23/20	National League	Women's D2N
Leicester Athena	3	18	25	15	25	15	98	14.45.00	Newcastle-u-Lyme	

Analysis selection

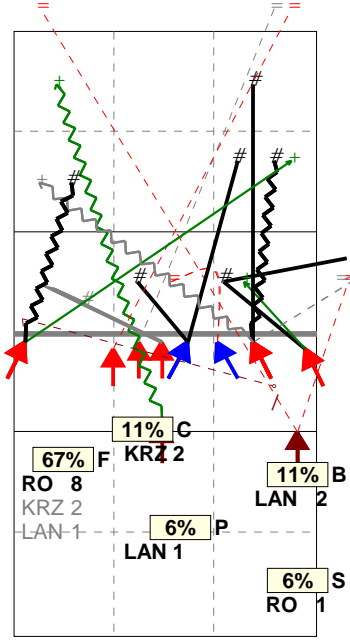
Leicester Athena | Attack | Rotation detail

S1 Ind. *E% N # #% = /
5 . 18 7 39% 6 1

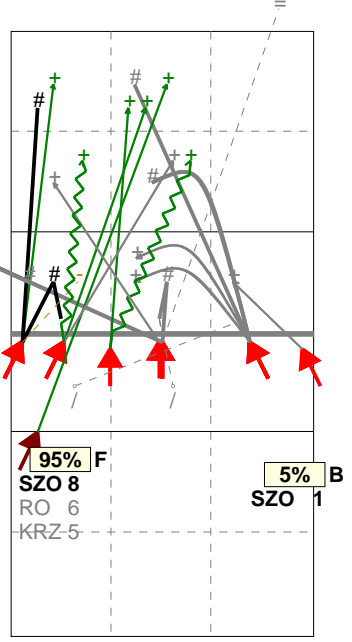
S6 Ind. *E% N # #% = /
6 14% 21 6 29% 1 2

S5 Ind. *E% N # #% = /
7 41% 17 8 47% 1 0

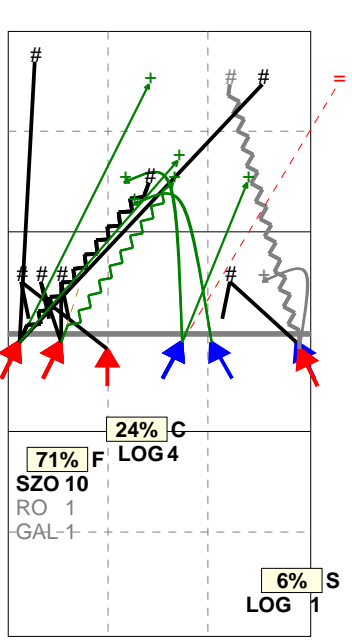
S4 Ind. *E% N # #% = /
5 6% 33 7 21% 2 3



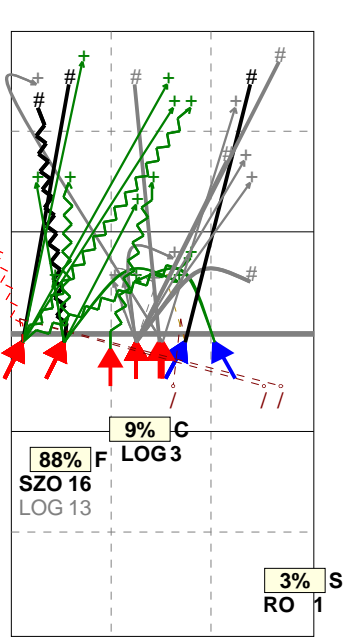
H: 61%(11) P: 22%(4) T: 17%(3)



H: 71%(15) P: 10%(2) T: 19%(4)



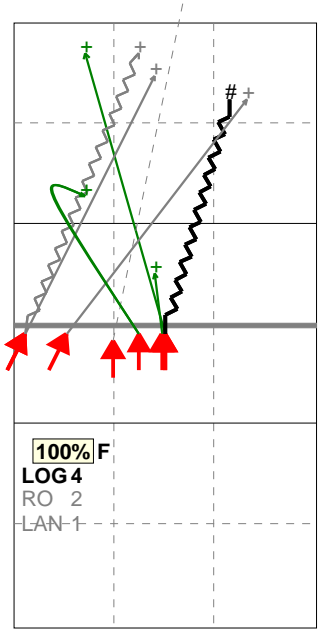
H: 65%(11) P: 18%(3) T: 18%(3)



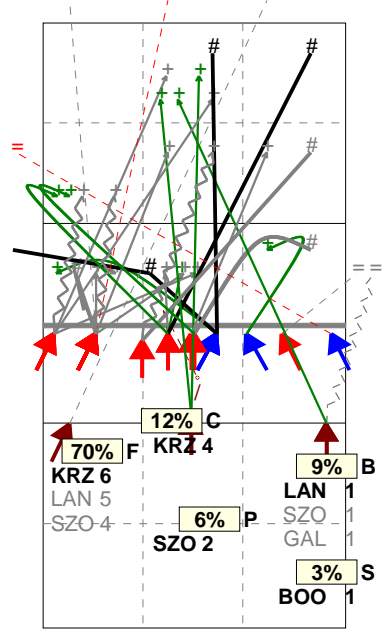
H: 64%(21) P: 18%(6) T: 18%(6)

S3 Ind. *E% N # #% = /
5 . 8 1 12% 1 0

S2 Ind. *E% N # #% = /
5 -3% 33 6 18% 6 1



H: 62%(5) P: 25%(2) T: 12%(1)



H: 70%(23) P: 12%(4) T: 18%(6)

