



National League 2019/2020

1° Day Women's D2N

Play 'Castle Volleyball

Match report

Newcastle Staffs Ladies	1
City of Salford	3

Match	21	Spectators	
Date	11/09/2019	Receipts	
Time	15.15.00	Hall	Keele University
City	Newcastle-u-Lyme		

Set	Time	Partial score			Score
1	0.27	7-8	16-15	21-18	25-20
2	0.24	4-8	11-16	15-21	19-25
3	0.30	8-7	14-16	17-21	25-27
4	0.26	7-8	16-14	19-21	21-25
1.47					90-97

Referees BARRY Lenny, PITTS Matthew

Newcastle Staffs L.	Set					Vote	Points			Serve		Reception				Attack			BK Pts				
	1	2	3	4	5		Tot	BP	W-L	Tot	Err	Tot	Err	Pos%	(Exc%)	Tot	Err	Blo		Pts	Pts%		
1 HARDING	3	3	6	5		5.5	6	3	-	11	3	1	.	.	18	.	3	4	22%	1			
2 C REAH	5	5	2	1		5.9	14	9	-3	19	1	7	26	5	35%	(19%)	44	11	6	14%	1		
5 FURSICH			4			5.8	4	3	-1	7	.	1	16	4	50%	(25%)	10	.	1	3	30%	.	
6 KETTLE						.	.	.	-1	1	.	.	4	1	25%	
7 BURTON	4	4	1	6		6.3	6	3	.	14	5	1	13	.	1	5	38%	.	
8 HALLWORTH	6	6	3	2		6	8	5	+6	11	.	1	15	1	1	2	13%	5	
9 GASKELL						.	.	.	-1	.	.	.	3	1	.	.	1	
10 KOSCIOLEK	2	2	5			5.8	10	2	+7	8	1	1	16	.	62%	(44%)	26	2	.	9	35%	.	
11 L GUEST						.	.	.	-1	.	.	.	26	1	46%	(31%)	
12 L OWEN						
14 WATSON	1	1	4	3		6	9	5	+2	20	1	4	24	5	1	5	21%	.	
Team totals							57	30	+8	91	11	16	91	12	44%	(26%)	151	19	7	34	23%	7	
Points won:							Ser	Att	Blo	Op	Er												
Set 1							6	11	1	7	24	4	6	20	.	65%	(55%)	39	1	5	11	28%	1
Set 2							4	8	.	7	20	1	4	22	4	27%	(9%)	27	6	.	8	30%	.
Set 3							4	8	5	8	25	3	4	26	2	46%	(27%)	50	7	1	8	16%	5
Set 4							2	7	1	11	22	3	2	23	6	39%	(17%)	35	5	1	7	20%	1
Head coach GUEST Richard																							
Assistant GUEST Keeley																							

City of Salford	Set					Vote	Points			Serve		Reception				Attack			BK Pts				
	1	2	3	4	5		Tot	BP	W-L	Tot	Err	Tot	Err	Pos%	(Exc%)	Tot	Err	Blo		Pts	Pts%		
1 SOHOR	3	4	3	4		6	12	8	+5	16	1	3	5	2	40%	(20%)	13	3	1	4	31%	5	
6 WORTHINGTON	1	2	1	2		6	3	2	+1	20	.	1	12	1	1	2	17%	.	
7 KURZAK	6	1	6	1		6.5	10	5	.	17	2	3	10	.	90%	(80%)	25	5	3	6	24%	1	
8 KAZARINOVA	4	5	4	5		5.5	6	3	-2	17	1	.	13	2	15%	(8%)	29	4	1	5	17%	1	
10 DWYER	2	3	2	3		5.9	17	8	+6	13	1	1	32	7	47%	(28%)	38	2	1	16	42%	.	
15 C NOLAN	5	6	5	6		5.6	10	7	-1	13	.	4	20	5	30%	(15%)	32	6	.	6	19%	.	
Team totals							58	33	+9	96	5	12	80	16	42%	(28%)	149	21	7	39	26%	7	
Points won:							Ser	Att	Blo	Op	Er												
Set 1							.	7	5	8	21	1	.	20	6	45%	(25%)	29	4	1	7	24%	5
Set 2							4	11	.	10	24	2	4	19	4	21%	(16%)	29	3	.	11	38%	.
Set 3							2	13	1	11	27	1	2	22	4	59%	(32%)	49	6	5	13	27%	1
Set 4							6	8	1	10	24	1	6	19	2	42%	(37%)	42	8	1	8	19%	1
Head coach CHANIN Phil																							
Assistant																							

Newcastle Staffs Ladies				KILL ON RECEPTION				City of Salford				
Points S in Diff	Receptions 91	Points SO 27	Each 3.37 Recept 1 Point	1st ATTACK AFTER POSITIVE RECEPTION (+#)				Receptions 80				Points S in Diff
6 +7				Errors	Blo	Pts%	Tot	Tot	Pts%	Blo	Errors	6 -1
5 -4				2	2	39%	38	32	41%	1	3	5 -2
4 +3				1st ATTACK AFTER NEGATIVE RECEPTION (-!)				Each 3.2 Recept 1 Point				4 -2
3 -1				Errors	Blo	Pts%	Tot	Tot	Pts%	Blo	Errors	3 +2
2 -7	Serve 91	Points BP 30		3	0	11%	27	20	10%	0	2	2 +3
1 -5	Each 3.03 Serve	1 Break Point		ATTACK ON DIG				Serve 96				Points S in Diff
				Errors	Blo	Pts%	Tot	Tot	Pts%	Blo	Errors	1 +7
				14	5	19%	86	97	25%	6	16	2 +3
								Each 2.91 Serve 1 Break Point				1 +7

BP Break point Pts Points
 Err Error Blo Blocked
 Pos% Positive +# Exc Excellent
 W-L Won - Lost [n] Starting Setter
 [n] Starting line-up
 □ Substitute ○ Starting Srv





National League 2019/2020

1° Day Women's D2N

Play 'Castle Volleyball

Match report - Set 1

Newcastle Staffs Ladies 1
City of Salford 0

Match	21	Spectators	
Date	11/09/2019	Receipts	
Time	15.15.00	Hall	Keele University
City	Newcastle-u-Lyme		

Referees BARRY Lenny, PITTS Matthew

Set	Time	Partial score			Score
1	0.27	7-8	16-15	21-18	25-20
0.27					25-20

Newcastle Staffs L.	1	Set	Vote	Points			Serve			Reception				Attack			BK Pts			
				Tot	BP	W-L	Tot	Err	Pts	Tot	Err	Pos%	(Exc%)	Tot	Err	Blo		Pts	Pts%	
1 HARDING	<input checked="" type="checkbox"/>		5.5	1	1	-2	4	.	1	4	.	3	.	.	.	
2 C REAH	<input checked="" type="checkbox"/>		6.5	8	5	+7	8	.	4	5	.	60%	(60%)	10	1	.	4	40%	.	
5 FURSICH	<input type="checkbox"/>		
6 KETTLE	<input type="checkbox"/>		1	.	.	1	.	100%	
7 BURTON	<input checked="" type="checkbox"/>		6.2	1	1	-2	5	2	1	3	.	1	.	.	.	
8 HALLWORTH	<input checked="" type="checkbox"/>		6	2	1	+1	2	7	.	1	1	14%	1	
9 GASKELL	<input type="checkbox"/>		
10 KOSCIOLEK	<input checked="" type="checkbox"/>		6.7	3	.	+2	2	1	.	5	.	80%	(80%)	9	.	.	3	33%	.	
11 L GUEST	<input type="checkbox"/>		9	.	56%	(44%)	
12 L OWEN	<input type="checkbox"/>		
14 WATSON	<input checked="" type="checkbox"/>		6.5	3	1	+2	2	1	6	.	.	3	50%	.	
Team totals				18	9	+8	24	4	6	20	.	65%	(55%)	39	1	5	11	28%	1	
Points won:				Ser	Att	Blo	Op	Er												
Set 1				6	11	1	7	24	4	6	20	.	65%	(55%)	39	1	5	11	28%	1
Head coach GUEST Richard																				
Assistant GUEST Keeley																				

City of Salford	①	Set	Vote	Points			Serve			Reception				Attack			BK Pts			
				Tot	BP	W-L	Tot	Err	Pts	Tot	Err	Pos%	(Exc%)	Tot	Err	Blo		Pts	Pts%	
1 SOHOR	<input checked="" type="checkbox"/>		6.3	5	3	+4	4	1	.	2	.	100%	(50%)	2	5	
6 WORTHINGTON	<input checked="" type="checkbox"/>		5.9	1	.	.	7	3	.	1	1	33%	.	
7 KURZAK	<input checked="" type="checkbox"/>		6.1	1	1	+1	4	.	.	2	.	100%	(100%)	3	.	.	1	33%	.	
8 KAZARINOVA	<input checked="" type="checkbox"/>		6	.	.	-2	2	.	.	5	1	20%	(20%)	5	1	
10 DWYER	<input checked="" type="checkbox"/>		6.2	5	2	-1	2	.	.	11	5	36%	(9%)	8	1	.	5	62%	.	
15 C NOLAN	<input checked="" type="checkbox"/>		5.5	.	.	-2	2	8	2	
Team totals				12	6	.	21	1	.	20	6	45%	(25%)	29	4	1	7	24%	5	
Points won:				Ser	Att	Blo	Op	Er												
Set 1				.	7	5	8	21	1	.	20	6	45%	(25%)	29	4	1	7	24%	5
Head coach CHANIN Phil																				
Assistant																				

Newcastle Staffs Ladies				City of Salford						
Points S in Diff	Receptions 20 Points SO 9	KILL ON RECEPTION				Receptions 20 Points SO 6	Points S in Diff			
6 +6	Each 2.22 Recept 1 Point	1st ATTACK AFTER POSITIVE RECEPTION (+#)				Each 3.33 Recept 1 Point	6 +1			
5 -1		Errors	Blo	Pts%	Tot	Tot	Pts%	Blo	Errors	5 -1
4 -1		0	2	50%	12	8	25%	0	0	4 -6
3 -2		1st ATTACK AFTER NEGATIVE RECEPTION (-!)					3 -1			
2 .	Serve 24 Points BP 9	Errors	Blo	Pts%	Tot	Tot	Pts%	Blo	Errors	2 .
1 +3	Each 2.67 Serve 1 Break Point	0	0	0%	6	2	50%	0	0	1 +2
		ATTACK ON DIG				Serve 21 Points BP 6				
		Errors	Blo	Pts%	Tot	Tot	Pts%	Blo	Errors	Each 3.5 Serve 1 Break Point
		1	3	24%	21	19	21%	1	4	

BP Break point Pts Points
Err Error Blo Blocked
Pos% Positive +# Exc Excellent
W-LWon - Lost Starting Setter
 Starting line-up
 Substitute Starting Srv

Professional Volleyball Performance Analysis



National League 2019/2020

1° Day Women's D2N

Play 'Castle Volleyball

Match report - Set 2

Newcastle Staffs Ladies	1
City of Salford	1

Match	21	Spectators	
Date	11/09/2019	Receipts	
Time	15.15.00	Hall	Keele University
City	Newcastle-u-Lyme		

Set	Time	Partial score			Score
1	0.27	7-8	16-15	21-18	25-20
2	0.24	4-8	11-16	15-21	19-25
0.51					44-45

Referees BARRY Lenny, PITTS Matthew

Newcastle Staffs L.	Set	Vote	Points			Serve			Reception				Attack			BK Pts			
			Tot	BP	W-L	Tot	Err	Pts	Tot	Err	Pos%	(Exc%)	Tot	Err	Blo		Pts	Pts%	
1 HARDING	3	6.9	2	1	+2	2	3	.	.	2	67%	.		
2 C REAH	5	6.2	3	2	-2	5	.	2	7	2	29%	.	9	3	1	11%	.		
5 FURSICH		6.6	3	2	+2	2	.	.	5	1	40%	(20%)	4	.	.	3	75%	.	
6 KETTLE		
7 BURTON	4	6.8	1	.	.	2	1	3	.	.	1	33%	.	
8 HALLWORTH	6	7	1	1	.	2	.	1	2	1	
9 GASKELL		.	.	.	-1	.	.	.	3	1	.	.	1	
10 KOSCIOLEK	2	6.5	1	.	+1	1	.	.	3	.	.	.	2	.	.	1	50%	.	
11 L GUEST		4	.	50%	(25%)	
12 L OWEN		
14 WATSON	1	6.5	1	1	-1	6	.	1	3	2	
Team totals			12	7	+1	20	1	4	22	4	27%	(9%)	27	6	.	8	30%	.	
Points won:			Ser	Att	Blo	Op	Er												
Set 1			6	11	1	7	24	4	6	20	.	65%	(55%)	39	1	5	11	28%	1
Set 2			4	8	.	7	20	1	4	22	4	27%	(9%)	27	6	.	8	30%	.
Head coach GUEST Richard																			
Assistant GUEST Keeley																			

City of Salford	Set	Vote	Points			Serve			Reception				Attack			BK Pts			
			Tot	BP	W-L	Tot	Err	Pts	Tot	Err	Pos%	(Exc%)	Tot	Err	Blo		Pts	Pts%	
1 SOHOR	4	.	1	1	.	2	.	.	1	1	.	.	1	.	.	1	100%	.	
6 WORTHINGTON	2	6.6	2	2	+1	4	.	1	4	1	.	1	25%	.	
7 KURZAK	1	6.2	3	2	+1	6	1	2	2	.	50%	.	3	1	.	1	33%	.	
8 KAZARINOVA	5	6.5	3	1	+2	7	1	.	2	.	.	.	6	.	.	3	50%	.	
10 DWYER	3	5.5	3	2	+1	4	.	1	8	1	38%	(38%)	8	1	.	2	25%	.	
15 C NOLAN	6	6.3	3	2	+1	1	.	.	6	2	.	.	7	.	.	3	43%	.	
Team totals			15	10	+6	24	2	4	19	4	21%	(16%)	29	3	.	11	38%	.	
Points won:			Ser	Att	Blo	Op	Er												
Set 1			.	7	5	8	21	1	.	20	6	45%	(25%)	29	4	1	7	24%	5
Set 2			4	11	.	10	24	2	4	19	4	21%	(16%)	29	3	.	11	38%	.
Head coach CHANIN Phil																			
Assistant																			

Newcastle Staffs Ladies				City of Salford						
Points S in Diff	Receptions 22 Points SO 5	KILL ON RECEPTION				Receptions 19 Points SO 5	Points S in Diff			
6 +4	Each 4.4 Recept 1 Point	1st ATTACK AFTER POSITIVE RECEPTION (+#)				Each 3.8 Recept 1 Point	6 +2			
5 -4		Errors	Blo	Pts%	Tot	Tot	Pts%	Blo	Errors	5 .
4 +2		0	0	50%	6	4	50%	0	0	4 +2
3 -1		1st ATTACK AFTER NEGATIVE RECEPTION (-!)					3 -1			
2 .	Serve 20 Points BP 7	Errors	Blo	Pts%	Tot	Tot	Pts%	Blo	Errors	2 +2
1 -7	Each 2.86 Serve 1 Break Point	2	0	29%	7	6	0%	0	1	1 +1
		ATTACK ON DIG				Serve 24 Points BP 10				
		Errors	Blo	Pts%	Tot	Tot	Pts%	Blo	Errors	Each 2.4 Serve 1 Break Point
		4	0	21%	14	19	47%	0	2	

BP Break point Pts Points
 Err Error Blo Blocked
 Pos% Positive +# Exc Excellent
 W-LWon - Lost [n] Starting Setter
 [n] Starting line-up
 □ Substitute ○ Starting Srv



Professional Volleyball Performance Analysis



National League 2019/2020

1° Day Women's D2N

Play 'Castle Volleyball

Match report - Set 3

Newcastle Staffs Ladies 1
City of Salford 3

Match	21	Spectators	
Date	11/09/2019	Receipts	
Time	15.15.00	Hall	Keele University
City	Newcastle-u-Lyme		

Set	Time	Partial score			Score
1	0.27	7-8	16-15	21-18	25-20
2	0.24	4-8	11-16	15-21	19-25
3	0.30	8-7	14-16	17-21	25-27
1.21					69-72

Referees BARRY Lenny, PITTS Matthew

Newcastle Staffs L.	Set 3	Vote	Points			Serve			Reception				Attack			BK Pts		
			Tot	BP	W-L	Tot	Err	Pts	Tot	Err	Pos%	(Exc%)	Tot	Err	Blo		Pts	Pts%
1 HARDING	6	6.2	2	1	+1	3	1	5	.	.	1	20%	1	
2 C REAH	2	5.9	2	2	-3	3	1	1	10	1	30% (20%)	13	3	.	.	.	1	
5 FURSICH		
6 KETTLE		
7 BURTON	1	6.1	3	2	+2	4	1	5	.	.	3	60%	.	
8 HALLWORTH	3	6	3	1	+3	5	5	3	
9 GASKELL		
10 KOSCIOLEK	5	6.3	5	2	+3	4	.	1	8	.	75% (38%)	13	2	.	4	31%	.	
11 L GUEST		.	.	.	-1	.	.	.	8	1	38% (25%)	
12 L OWEN		
14 WATSON	4	6.3	2	2	-1	6	.	2	.	.	.	9	2	1	.	.	.	
Team totals			17	10	+4	25	3	4	26	2	46% (27%)	50	7	1	8	16%	5	
Points won:			Ser	Att	Blo	Op	Er											
Set 1			6	11	1	7	24	4	6	20	.	65% (55%)	39	1	5	11	28%	1
Set 2			4	8	.	7	20	1	4	22	4	27% (9%)	27	6	.	8	30%	.
Set 3			4	8	5	8	25	3	4	26	2	46% (27%)	50	7	1	8	16%	5
Head coach GUEST Richard																		
Assistant GUEST Keeley																		

City of Salford	Set 3	Vote	Points			Serve			Reception				Attack			BK Pts		
			Tot	BP	W-L	Tot	Err	Pts	Tot	Err	Pos%	(Exc%)	Tot	Err	Blo		Pts	Pts%
1 SOHOR	3	5.9	2	1	-2	4	.	1	1	1	.	7	2	1	1	14%	.	
6 WORTHINGTON	1	6.3	.	.	.	6	3	
7 KURZAK	6	7	4	2	+1	5	.	1	3	.	100% (100%)	8	1	2	2	25%	1	
8 KAZARINOVA	4	5.5	1	1	-3	4	.	.	5	1	.	8	2	1	1	12%	.	
10 DWYER	2	6.4	8	4	+6	5	1	.	6	.	83% (33%)	18	.	1	8	44%	.	
15 C NOLAN	5	5.5	1	.	-2	3	.	.	7	2	71% (29%)	5	1	.	1	20%	.	
Team totals			16	8	.	27	1	2	22	4	59% (32%)	49	6	5	13	27%	1	
Points won:			Ser	Att	Blo	Op	Er											
Set 1			.	7	5	8	21	1	.	20	6	45% (25%)	29	4	1	7	24%	5
Set 2			4	11	.	10	24	2	4	19	4	21% (16%)	29	3	.	11	38%	.
Set 3			2	13	1	11	27	1	2	22	4	59% (32%)	49	6	5	13	27%	1
Head coach CHANIN Phil																		
Assistant																		

Newcastle Staffs Ladies				City of Salford						
Points S in Diff	Receptions 26 Points SO 7	KILL ON RECEPTION				Receptions 22 Points SO 8	Points S in Diff			
6 -2	Each 3.71 Recept 1 Point	1st ATTACK AFTER POSITIVE RECEPTION (+#)				Each 2.75 Recept 1 Point	6 .			
5 +1		Errors	Blo	Pts%	Tot	Tot	Pts%	Blo	Errors	5 -2
4 +2		1	0	18%	11	12	50%	0	2	4 .
3 +1		1st ATTACK AFTER NEGATIVE RECEPTION (-!)					3 .			
2 -2	Serve 25 Points BP 10	Errors	Blo	Pts%	Tot	Tot	Pts%	Blo	Errors	2 +1
1 -2	Each 2.5 Serve 1 Break Point	1	0	12%	8	4	25%	0	0	1 +3
		ATTACK ON DIG				Serve 27 Points BP 8				
		Errors	Blo	Pts%	Tot	Tot	Pts%	Blo	Errors	Each 3.38 Serve 1 Break Point
		5	1	16%	31	33	18%	5	4	

BP Break point Pts Points
Err Error Blo Blocked
Pos% Positive +# Exc Excellent
W-L Won - Lost [n] Starting Setter
[n] Starting line-up
[] Substitute [o] Starting Srv

Professional Volleyball Performance Analysis



National League 2019/2020

1° Day Women's D2N

Play 'Castle Volleyball

Match report - Set 4

Newcastle Staffs Ladies	1
City of Salford	3

Match	21	Spectators	
Date	11/09/2019	Receipts	
Time	15.15.00	Hall	Keele University
City	Newcastle-u-Lyme		

Set	Time	Partial score			Score
1	0.27	7-8	16-15	21-18	25-20
2	0.24	4-8	11-16	15-21	19-25
3	0.30	8-7	14-16	17-21	25-27
4	0.26	7-8	16-14	19-21	21-25
1.47					90-97

Referees BARRY Lenny, PITTS Matthew

Newcastle Staffs L.	Set	Vote	Points			Serve			Reception				Attack			BK Pts		
			Tot	BP	W-L	Tot	Err	Pts	Tot	Err	Pos%	(Exc%)	Tot	Err	Blo		Pts	Pts%
1 HARDING	5	5.7	1	-	-1	2	2	-	-	-	-	6	-	-	1	17%	-	
2 C REAH	1	6	1	-	-5	3	-	-	4	2	25%	-	12	4	-	1	8%	
5 FURSICH	4	6	1	1	-3	5	-	1	11	3	55% (27%)	-	6	-	-	-	-	
6 KETTLE		-	-	-	-1	-	-	-	3	1	-	-	-	-	-	-	-	
7 BURTON	6	6.4	1	-	-	3	1	-	-	-	-	-	2	-	-	1	50%	
8 HALLWORTH	2	6.3	2	2	+2	2	-	-	-	-	-	-	1	-	-	1	100%	
9 GASKELL		-	-	-	-	-	-	-	-	-	-	-	-	-	-	-	-	
10 KOSCIOLEK		-	1	-	+1	1	-	-	-	-	-	-	2	-	-	1	50%	
11 L GUEST		-	-	-	-	-	-	-	5	-	40% (20%)	-	-	-	-	-	-	
12 L OWEN		-	-	-	-	-	-	-	-	-	-	-	-	-	-	-	-	
14 WATSON	3	5.9	3	1	+2	6	-	1	-	-	-	-	6	1	-	2	33%	
Team totals			10	4	-5	22	3	2	23	6	39% (17%)	35	5	1	7	20%	1	
Points won:			Ser	Att	Blo	Op	Er											
Set 1			6	11	1	7	24	4	6	20	-	65% (55%)	39	1	5	11	28%	1
Set 2			4	8	-	7	20	1	4	22	4	27% (9%)	27	6	-	8	30%	-
Set 3			4	8	5	8	25	3	4	26	2	46% (27%)	50	7	1	8	16%	5
Set 4			2	7	1	11	22	3	2	23	6	39% (17%)	35	5	1	7	20%	1
Head coach GUEST Richard																		
Assistant GUEST Keeley																		

City of Salford	Set	Vote	Points			Serve			Reception				Attack			BK Pts		
			Tot	BP	W-L	Tot	Err	Pts	Tot	Err	Pos%	(Exc%)	Tot	Err	Blo		Pts	Pts%
1 SOHOR	4	6.8	4	3	+3	6	-	2	1	-	-	-	3	1	-	2	67%	
6 WORTHINGTON	2	5.6	-	-	-	3	-	-	-	-	-	-	2	-	-	-	-	
7 KURZAK	1	7	2	-	-3	2	1	-	3	-	100% (100%)	-	11	3	1	2	18%	
8 KAZARINOVA	5	6	2	1	+1	4	-	-	1	-	100%	-	10	1	-	1	10%	
10 DWYER	3	5.8	1	-	-	2	-	-	7	1	43% (43%)	-	4	-	-	1	25%	
15 C NOLAN	6	6.2	6	5	+2	7	-	4	7	1	14% (14%)	-	12	3	-	2	17%	
Team totals			15	9	+3	24	1	6	19	2	42% (37%)	42	8	1	8	19%	1	
Points won:			Ser	Att	Blo	Op	Er											
Set 1			-	7	5	8	21	1	-	20	6	45% (25%)	29	4	1	7	24%	5
Set 2			4	11	-	10	24	2	4	19	4	21% (16%)	29	3	-	11	38%	-
Set 3			2	13	1	11	27	1	2	22	4	59% (32%)	49	6	5	13	27%	1
Set 4			6	8	1	10	24	1	6	19	2	42% (37%)	42	8	1	8	19%	1
Head coach CHANIN Phil																		
Assistant																		

Newcastle Staffs Ladies				City of Salford						
Points S in Diff	Receptions 23 Points SO 6	KILL ON RECEPTION				Receptions 19 Points SO 6	Points S in Diff			
6 -1	Each 3.83 Recept 1 Point	1st ATTACK AFTER POSITIVE RECEPTION (+#)				Each 3.17 Recept 1 Point	6 -4			
5 -		Errors	Blo	Pts%	Tot	Tot	Pts%	Blo	Errors	5 +1
4 -		1	0	44%	9	8	38%	1	1	4 +2
3 +1		1st ATTACK AFTER NEGATIVE RECEPTION (-!)					3 +4			
2 -5	Serve 22 Points BP 4	Errors	Blo	Pts%	Tot	Tot	Pts%	Blo	Errors	2 -
1 +1	Each 5.5 Serve 1 Break Point	0	0	0%	6	8	0%	0	1	1 +1
		ATTACK ON DIG				Serve 24 Points BP 9				
		Errors	Blo	Pts%	Tot	Tot	Pts%	Blo	Errors	Each 2.67 Serve 1 Break Point
		4	1	15%	20	26	19%	0	6	

BP Break point Pts Points
Err Error Blo Blocked
Pos% Positive +# Exc Excellent
W-LWon - Lost [n] Starting Setter
[n] Starting line-up
□ Substitute ○ Starting Srv

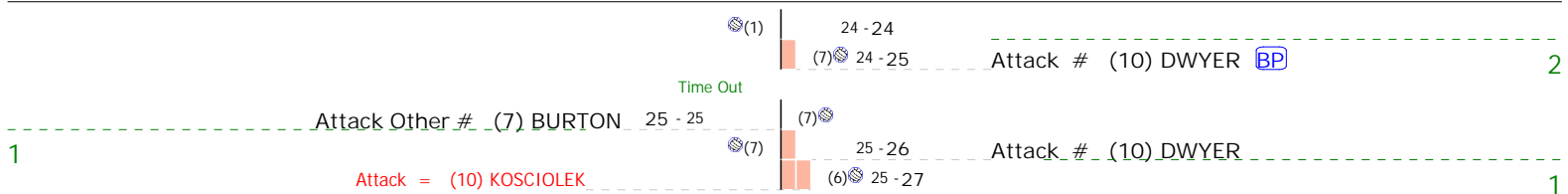


S in	Newcastle Staffs Ladies 1	- 3	City of Salford	S in
3	Dig = (14) WATSON		(6) 0 - 1	6
	Set = (7) BURTON		(6) 0 - 2	
	Attack Quick blocked (1) HARDING		(6) 0 - 3	
		1 - 3	(6)	Block Quick # (1) SOHOR BP
		(10)	(10)	Attack = (10) DWYER
	Attack # (2) REAH	2 - 4	(10)	Attack # (10) DWYER
2	BP Serve Tense # (1) HARDING	3 - 4	(1)	Reception Tense = (10) DWYER
	Attack blocked (7) BURTON	(1)		Block # (1) SOHOR
	Attack = (2) REAH		3 - 5	
			(1) 3 - 6	
			(1) 3 - 7	Attack Quick # (7) KURZAK BP
1	BP Attack Quick # (8) HALLWORTH	4 - 7	(1)	
		5 - 7	(7)	
	BP Serve floating # (7) BURTON	6 - 7	(7)	Reception = (10) DWYER
	BP Attack # (2) REAH	(7)		
		7 - 7	(7)	
	Serve floating = (7) BURTON		7 - 8	
		8 - 8	(8)	Attack = (8) KAZARINOVA
6	BP Serve Tense # (2) REAH	9 - 8	(2)	Free ball = (10) DWYER
		10 - 8	(2)	Reception Tense = (10) DWYER
				Time Out
	BP Serve Tense # (2) REAH	11 - 8	(2)	Reception Tense = (8) KAZARINOVA
		(2)		Attack Other # (6) WORTHINGTON
	Attack # (10) KOSCIOLEK	12 - 9	(15)	
5		13 - 9	(8)	Attack = (15) NOLAN
		(8)		Attack # (10) DWYER
		(8)		Attack # (10) DWYER BP
	Attack Quick blocked (1) HARDING		(7) 13 - 10	
			(7) 13 - 11	
	Attack # (14) WATSON	14 - 12	(7)	Block Quick # (1) SOHOR BP
4		15 - 12	(14)	Set = (6) WORTHINGTON
				Time Out
	Serve Tense = (14) WATSON		15 - 13	
	Attack Quick blocked (1) HARDING		(6) 15 - 14	Block Quick # (1) SOHOR BP
			(6) 15 - 15	Attack # (10) DWYER BP
	Attack # (10) KOSCIOLEK		(6) 15 - 15	
		16 - 15	(6)	
3	Serve floating = (10) KOSCIOLEK		(10)	
	Attack # (2) REAH	17 - 16	(10)	
2		18 - 16	(1)	Attack = (15) NOLAN
	Attack Quick blocked (8) HALLWORTH		(1)	Block Quick # (1) SOHOR
		19 - 17	(1)	Serve floating = (1) SOHOR
1	Serve floating = (7) BURTON		(7)	
	Block Other # (8) HALLWORTH	20 - 18	(8)	Attack Other blocked (6) WORTHINGTON
6	BP Serve Tense # (2) REAH	21 - 18	(2)	Reception Tense = (10) DWYER
	BP Attack # (14) WATSON	22 - 18	(2)	
	BP Serve Tense # (2) REAH	23 - 18	(2)	Reception Tense = (10) DWYER
	Dig = (8) HALLWORTH		(2)	
		23 - 19		
				Time Out
	Attack # (14) WATSON		(15)	23 - 19
		24 - 19	(15)	
				Substitution in: KETTLE exit: HALLWORTH
5			(6)	24 - 19
			(6)	24 - 20
	Attack # (10) KOSCIOLEK	25 - 20	(7)	

S in	Newcastle Staffs Ladies 1	- 3	City of Salford	S in
4	1 - 0	(14)	Set = (6) WORTHINGTON	2
	Block = (1) HARDING	(14)	1 - 1	
	Set = (7) BURTON		(6) 1 - 2	1
	Reception = (2) REAH		(6) 1 - 3	
	Attack # (10) KOSCIOLEK	2 - 3	(6)	Serve floating # (6) WORTHINGTON BP
3	Attack Other = (2) REAH	(10)	2 - 4	
	Reception = (2) REAH		(10) 2 - 5	Serve floating # (10) DWYER BP
	Attack Other # (7) BURTON		(10) 2 - 5	6
2		3 - 5	(10)	
		(1)	3 - 6	Attack # (15) NOLAN
1		4 - 6	(1)	Attack Other = (7) KURZAK
		(7)	4 - 7	Attack Quick # (7) KURZAK
	Attack = (14) WATSON		(8) 4 - 8	Attack # (15) NOLAN BP
			(8) 4 - 9	4
			(8) 4 - 10	Attack Other # (6) WORTHINGTON BP
			(8) 4 - 11	Attack # (15) NOLAN BP
			(8) 4 - 12	Attack # (8) KAZARINOVA BP
	Time Out			
	Attack = (8) HALLWORTH		(8) 4 - 13	
		5 - 13	(8)	Serve floating = (8) KAZARINOVA
	Substitution in: FURSICH exit: KOSCIOLEK			
6		6 - 13	(2)	Set = (1) SOHOR
	BP Serve Tense # (2) REAH	7 - 13	(2)	Reception Tense = (15) NOLAN
	BP Serve Tense # (2) REAH	8 - 13	(2)	Reception Tense = (10) DWYER
	BP Attack Other # (5) FURSICH	9 - 13	(2)	
			(2)	Attack # (8) KAZARINOVA
	Substitution in: GASKELL exit: REAH			
		10 - 14	(15)	Attack Other = (6) WORTHINGTON
5	BP Serve floating # (8) HALLWORTH	11 - 14	(8)	Reception = (1) SOHOR
			(8)	Attack Other # (10) DWYER
			(8)	11 - 14
			(7)	11 - 15
			(7)	Attack Quick # (1) SOHOR BP
	Reception = (9) GASKELL		(7)	11 - 16
			(7)	11 - 17
			(7)	Serve floating # (7) KURZAK BP
			(7)	11 - 18
	Time Out			Attack # (10) DWYER BP
	Attack = (14) WATSON		(7)	11 - 19
	Reception = (5) FURSICH		(7)	11 - 20
4		12 - 20	(7)	Serve floating # (7) KURZAK BP
	BP Attack # (5) FURSICH	13 - 20	(14)	Attack = (10) DWYER
			(14)	
		14 - 20	(14)	
	Time Out			
	BP Serve Tense # (14) WATSON	15 - 20	(14)	Reception Tense = (15) NOLAN
	Set = (7) BURTON		(14)	
	Attack # (5) FURSICH	16 - 21	(6)	
3	BP Attack Other # (1) HARDING	17 - 21	(5)	Attack # (8) KAZARINOVA
			(5)	
			(5)	17 - 21
	Attack = (2) REAH		(10)	17 - 22
	Attack Quick # (1) HARDING	18 - 23	(10)	17 - 23
2	Attack = (2) REAH		(1)	18 - 24
	Attack # (2) REAH		(1)	18 - 24
1		19 - 24	(7)	18 - 24
	Serve floating = (7) BURTON		(7)	19 - 25

S in	Newcastle Staffs Ladies 1	- 3	City of Salford	S in	
1	Block # (8) HALLWORTH	1 - 0	(6)	Attack blocked (10) DWYER	1
6	BP Serve Tense # (2) REAH	2 - 0	(2)	Reception Tense = (15) NOLAN	
	Attack = (2) REAH		2 - 1		
	Attack = (10) KOSCIOLEK		(10) 2 - 2		6
	Attack = (14) WATSON		(10) 2 - 3		
			(10) 2 - 3	Attack # (7) KURZAK	
			(10) 2 - 4		
		3 - 4	(10)	Attack = (7) KURZAK	
5		4 - 4	(8)	Attack = (8) KAZARINOVA	
		5 - 4	(8)	Attack = (1) SOHOR	
			(8)	Attack Tense # (1) SOHOR	
	Reception = (2) REAH		5 - 4		
			(1) 5 - 6	Serve floating # (1) SOHOR	5
			(1) 5 - 6	Attack # (10) DWYER	
			(1) 5 - 7		
4	BP Attack Quick # (1) HARDING	6 - 7	(1)	Set = (8) KAZARINOVA	
		7 - 7	(14)		
	BP Serve Tense # (14) WATSON	8 - 7	(14)	Reception Tense = (1) SOHOR	
			(14)	Attack # (10) DWYER	
			(14)		
	Attack = (2) REAH		(8) 8 - 8	Attack # (8) KAZARINOVA	4
			(8) 8 - 9		
	Attack # (10) KOSCIOLEK	9 - 10	(8)		
3			(10)	Attack Fast # (7) KURZAK	3
	Attack = (2) REAH		(15) 9 - 12		
	Block # (1) HARDING	10 - 12	(15)	Attack blocked (8) KAZARINOVA	
2	BP Block Other # (2) REAH	11 - 12	(1)	Attack Fast blocked (7) KURZAK	
	Serve Tense = (1) HARDING		(1)		
	Reception = (11) GUEST			Serve floating # (7) KURZAK	2
			(7) 11 - 14	Attack # (10) DWYER	
			(7) 11 - 14		
			(7) 11 - 15		
1	Block Quick # (8) HALLWORTH	12 - 15	(7)	Attack Quick blocked (1) SOHOR	
	BP Attack Other # (7) BURTON		(7)		
		13 - 15	(7)		
	BP Block # (8) HALLWORTH	14 - 15	(7)	Attack blocked (7) KURZAK	
	Serve floating = (7) BURTON		(7)		
				Attack # (10) DWYER	1
			(6) 14 - 16		
			(6) 14 - 17		
	Set = (7) BURTON		(6) 14 - 18		
	Attack = (14) WATSON		(6) 14 - 19		
		Time Out			
6	Serve Tense = (2) REAH	15 - 19	(6)	Attack Quick = (1) SOHOR	
			(2)		
		16 - 20	(10)	Serve floating = (10) DWYER	6
5		17 - 20	(8)	Attack = (8) KAZARINOVA	6
		Time Out			
			(8)	Attack # (15) NOLAN	
	Attack # (10) KOSCIOLEK	18 - 21	(1)		5
4	BP Serve Tense # (14) WATSON	19 - 21	(14)	Reception Tense = (8) KAZARINOVA	
		Time Out			
	BP Attack # (10) KOSCIOLEK	19 - 21	(14)		
		20 - 21	(14)		
			(14)	Attack # (10) DWYER	
	Attack # (10) KOSCIOLEK	21 - 22	(8)		4
3	BP Serve floating # (10) KOSCIOLEK	22 - 22	(10)	Reception = (15) NOLAN	
	BP Attack Other # (7) BURTON	23 - 22	(10)		
	Attack blocked (14) WATSON		(10)		
				Block # (7) KURZAK	
		24 - 23	(15)	Attack = (15) NOLAN	3
2			(1)	Attack # (10) DWYER	
		24 - 23			

S in Newcastle Staffs Ladies 1 - 3 City of Salford S in



S in	Newcastle Staffs Ladies 1	- 3	City of Salford	S in
6	Attack = (14) WATSON (2)		0 - 1	2
	Attack # (14) WATSON		(6) 1 - 1	1
		1 - 1	(6)	
5			1 - 1	Attack # (7) KURZAK
	Attack Quick # (1) HARDING		1 - 2	
		2 - 2	(10) 1 - 2	6
4	BP Serve Tense # (14) WATSON	3 - 2 (14)		
		4 - 2 (14)		
		5 - 2 (14)		
	Attack blocked (5) FURSICH		5 - 3	Attack # (8) KAZARINOVA
	Reception = (5) FURSICH		(1) 5 - 4	Block # (8) KAZARINOVA BP
			(1) 5 - 5	Serve floating # (1) SOHOR BP
			(1) 5 - 6	Attack # (15) NOLAN BP
		6 - 6	(1)	Attack = (7) KURZAK
3	BP Serve floating # (5) FURSICH	7 - 6 (5)		Reception = (10) DWYER
	Attack = (2) REAH		7 - 7	
	Set = (5) FURSICH		(8) 7 - 8	
		8 - 8	(8)	Attack = (15) NOLAN
2	Serve Tense = (1) HARDING		8 - 9	
	Attack # (2) REAH		(15) 8 - 9	3
		9 - 9	(15)	
1	BP Block # (8) HALLWORTH	10 - 9 (7)		Attack blocked (7) KURZAK
	Attack = (2) REAH		10 - 10	
		11 - 10	(7)	Serve floating = (7) KURZAK
6	BP Attack Other # (8) HALLWORTH	12 - 10 (2)		Attack Other # (1) SOHOR
	Attack # (14) WATSON		(6) 12 - 11	1
		13 - 11	(6)	
5			13 - 11	Attack # (7) KURZAK
			13 - 12	
		14 - 12	(10)	Attack = (15) NOLAN
4		15 - 12 (14)		Attack = (7) KURZAK
			(14)	Attack # (15) NOLAN
	Substitution in: KETTLE exit: WATSON		15 - 13	
	Reception = (5) FURSICH		(1) 15 - 14	Serve floating # (1) SOHOR BP
			(1)	Set = (8) KAZARINOVA
3		17 - 14 (5)		Attack = (8) KAZARINOVA
		18 - 14 (5)		Time Out
	Attack = (2) REAH		18 - 15	Free ball = (1) SOHOR
	Attack = (2) REAH		(8) 18 - 16	4
		19 - 16	(8)	Attack = (7) KURZAK
2	Serve Tense = (1) HARDING		19 - 17	
	Reception = (2) REAH		(15) 19 - 18	Serve floating # (15) NOLAN BP
	Reception = (5) FURSICH		(15) 19 - 19	Serve floating # (15) NOLAN BP
		19 - 20	(15)	Serve floating # (15) NOLAN BP
	Reception = (6) KETTLE		(15) 19 - 21	
	Set = (8) HALLWORTH			
	Substitution in: WATSON exit: KETTLE		19 - 22	Serve floating # (15) NOLAN BP
	Reception = (2) REAH		(15)	
	Substitution in: KOSCIOLEK exit: REAH		20 - 22	
1	Attack Other # (7) BURTON		(15)	
	Serve floating = (7) BURTON		(7)	
	Attack # (10) KOSCIOLEK		21 - 23	2
6			(10)	
			(6) 21 - 24	Attack # (10) DWYER
			(6) 21 - 25	Attack Other # (1) SOHOR BP

Newcastle Staffs Ladies	1	25	19	25	21	90	11/09/20	National League	Women's D2N
City of Salford	3	20	25	27	25	97	15.15.00	Newcastle-u-Lyme	

Analysis selection

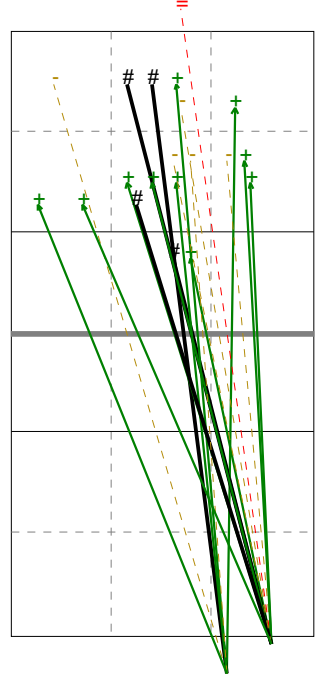
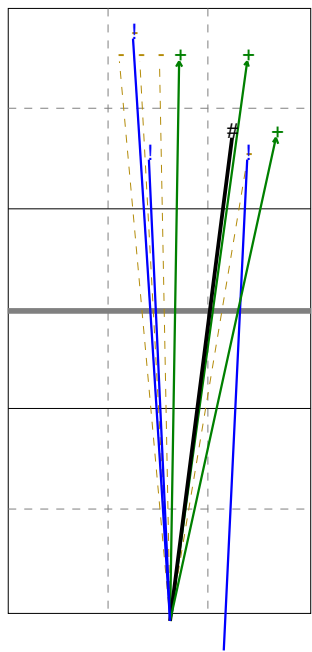
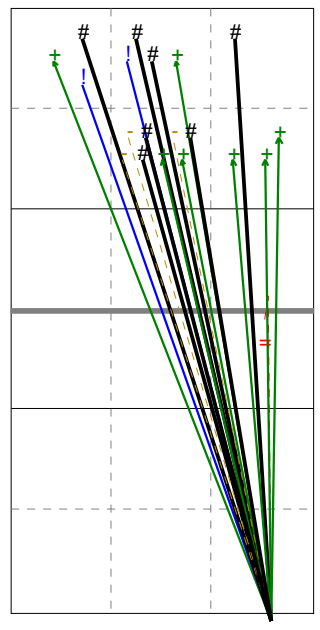
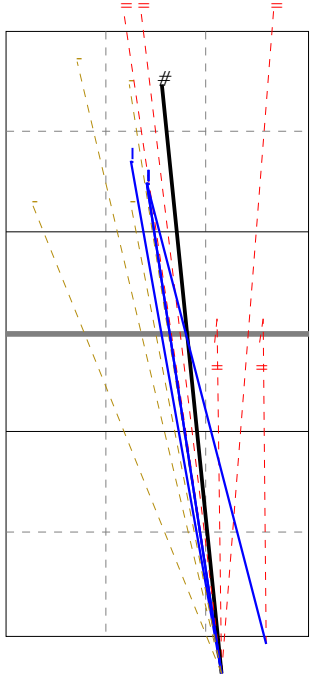
Newcastle Staffs Ladies | Serve | Rotation detail

S1 Ind. *E% N = =% # /
2 36% 14 5 36% 1 0

S6 Ind. *E% N = =% # /
7 80% 20 1 5% 7 0

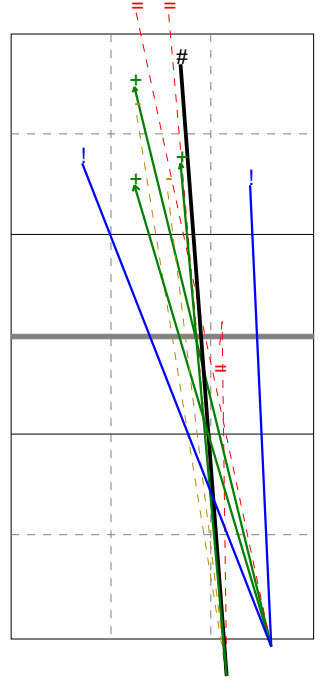
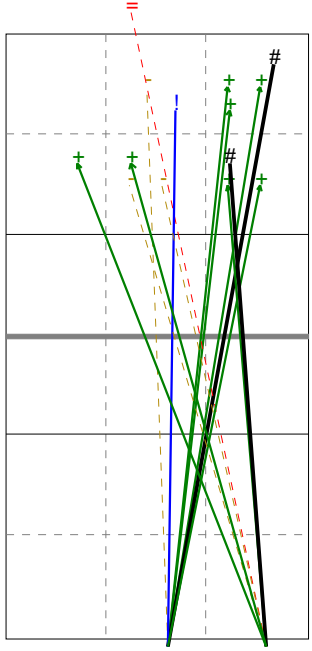
S5 Ind. *E% N = =% # /
4 58% 12 0 0% 1 0

S4 Ind. *E% N = =% # /
6 70% 20 1 5% 4 0



S3 Ind. *E% N = =% # /
6 71% 14 1 7% 2 0

S2 Ind. *E% N = =% # /
4 55% 11 3 27% 1 0



Newcastle Staffs Ladies	1	25	19	25	21	90	11/09/20	National League	Women's D2N
City of Salford	3	20	25	27	25	97	15.15.00	Newcastle-u-Lyme	

Analysis selection

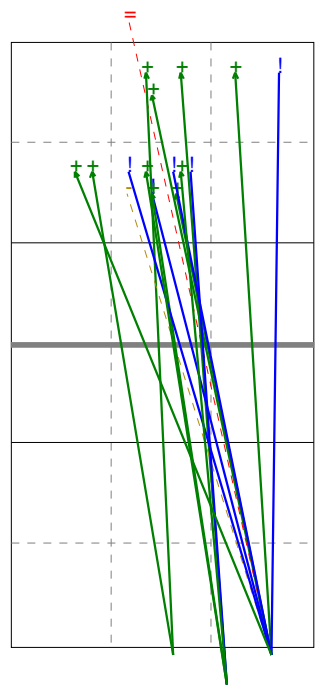
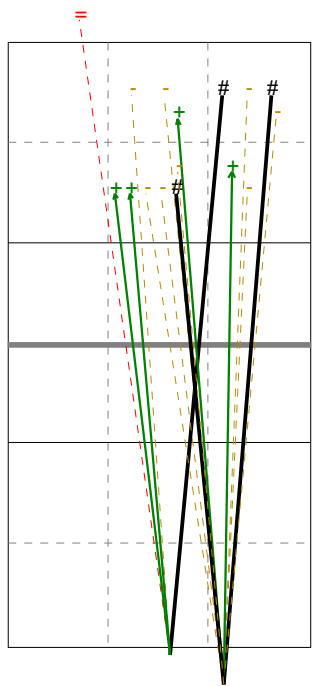
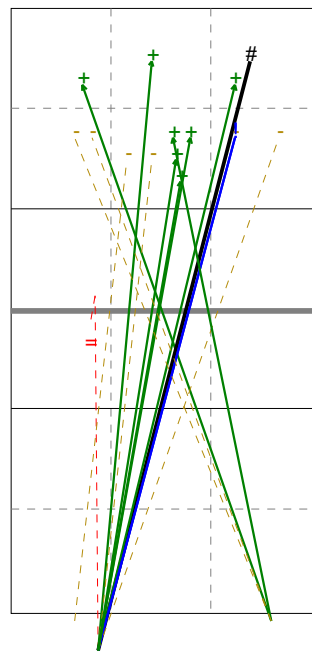
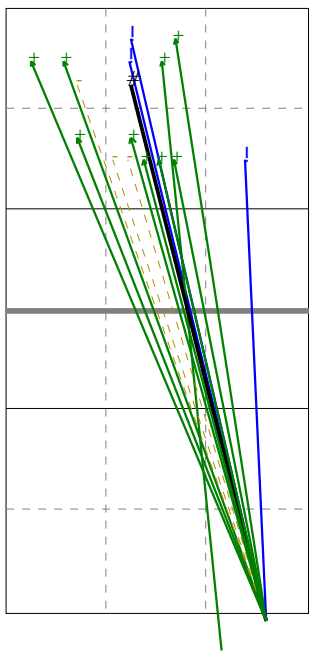
City of Salford | Serve | Rotation detail

S1 Ind. *E% N = =% # /
5 81% 16 0 0% 1 0

S6 Ind. *E% N = =% # /
5 59% 17 1 6% 1 0

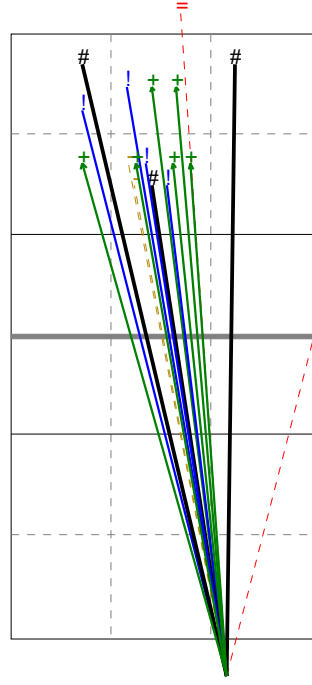
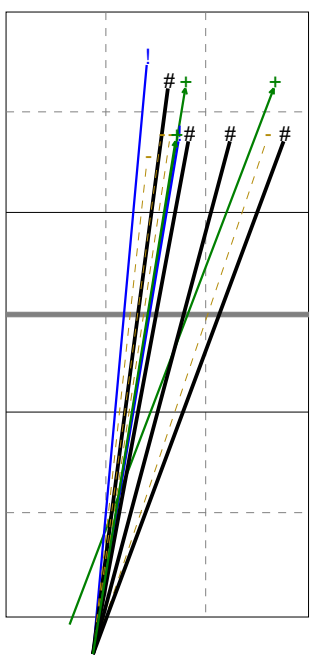
S5 Ind. *E% N = =% # /
6 44% 16 1 6% 3 0

S4 Ind. *E% N = =% # /
4 88% 17 1 6% 0 0



S3 Ind. *E% N = =% # /
6 69% 13 0 0% 4 0

S2 Ind. *E% N = =% # /
5 76% 17 2 12% 3 0



Newcastle Staffs Ladies	1	25	19	25	21	90	11/09/20	National League	Women's D2N
City of Salford	3	20	25	27	25	97	15.15.00	Newcastle-u-Lyme	

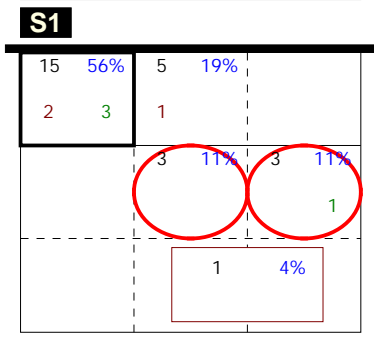
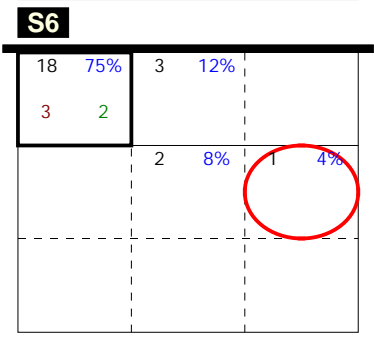
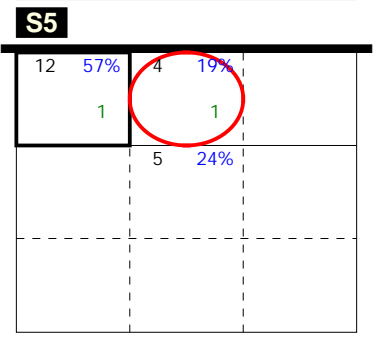
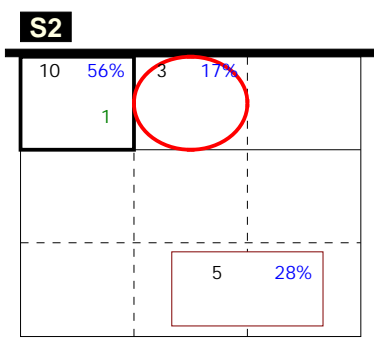
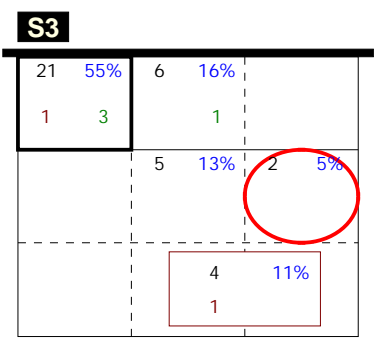
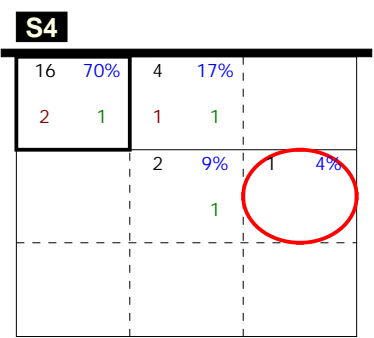
	Total	3	2	1	0	index
Newcastle Staffs L.	91	24	16	39	12	1.57
1 HARDING	0	0	0	0	0	----
2 REAH	26	5	4	12	5	1.35
5 FURSICH	16	4	4	4	4	1.50
6 KETTLE	4	0	1	2	1	1.00
7 BURTON	0	0	0	0	0	----
8 HALLWORTH	0	0	0	0	0	----
9 GASKELL	3	0	0	2	1	0.67
10 KOSCIOLEK	16	7	3	6	0	2.06
11 GUEST	26	8	4	13	1	1.73
12 OWEN	0	0	0	0	0	----
14 WATSON	0	0	0	0	0	----

	Total	3	2	1	0	index
City of Salford	80	22	12	30	16	1.50
1 SOHOR	5	1	1	1	2	1.20
6 WORTHINGTON	0	0	0	0	0	----
7 KURZAK	10	8	1	1	0	2.70
8 KAZARINOVA	13	1	1	9	2	1.08
10 DWYER	32	9	6	10	7	1.53
15 NOLAN	20	3	3	9	5	1.20

Newcastle Staffs Ladies	1	25	19	25	21	90	11/09/20	National League	Women's D2N
City of Salford	3	20	25	27	25	97	15.15.00	Newcastle-u-Lyme	

Analysis selection

Newcastle Staffs Ladies | Attack | Rotation detail

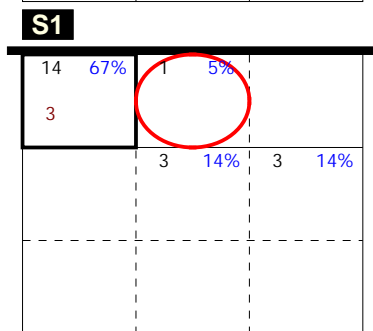
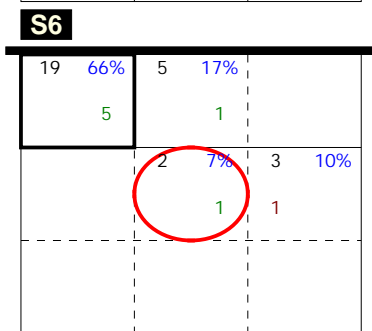
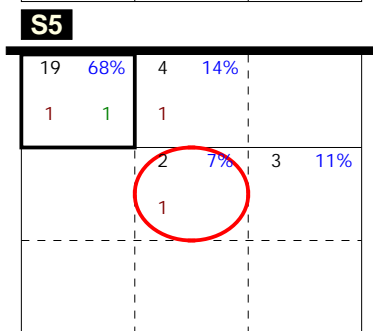
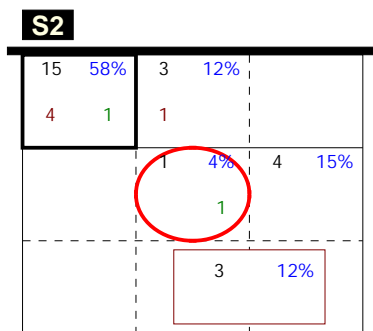
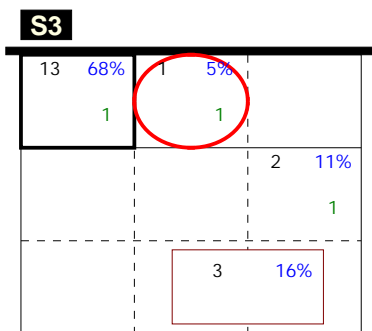
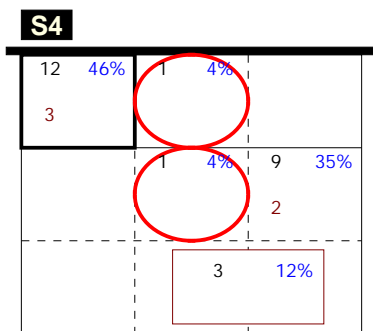


Total events Total events %
 Break Points won Break Points lost

Newcastle Staffs Ladies	1	25	19	25	21	90	11/09/20	National League	Women's D2N
City of Salford	3	20	25	27	25	97	15.15.00	Newcastle-u-Lyme	

Analysis selection

City of Salford | Attack | Rotation detail



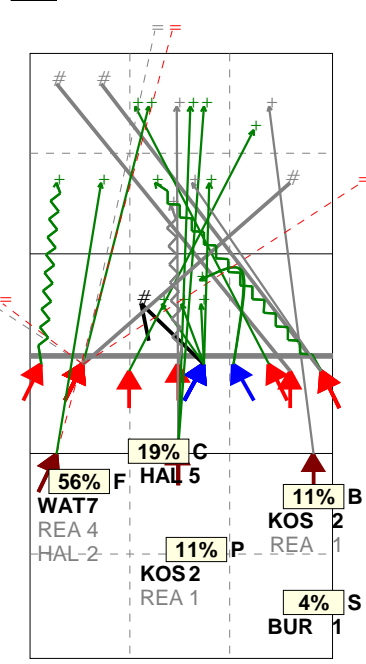
Total events Total events %
 Break Points won Break Points lost

Newcastle Staffs Ladies	1	25	19	25	21	90	11/09/20	National League	Women's D2N
City of Salford	3	20	25	27	25	97	15.15.00	Newcastle-u-Lyme	

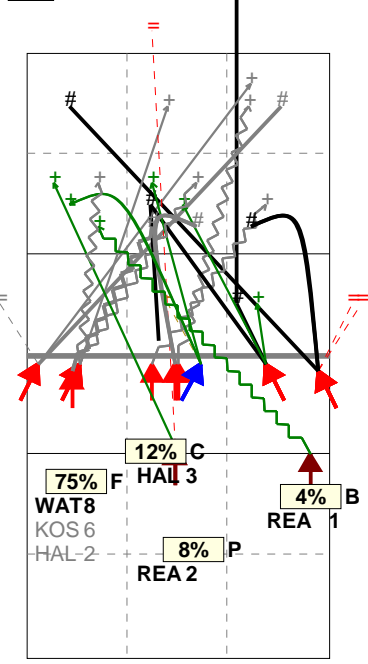
Analysis selection

Newcastle Staffs Ladies | Attack | Rotation detail

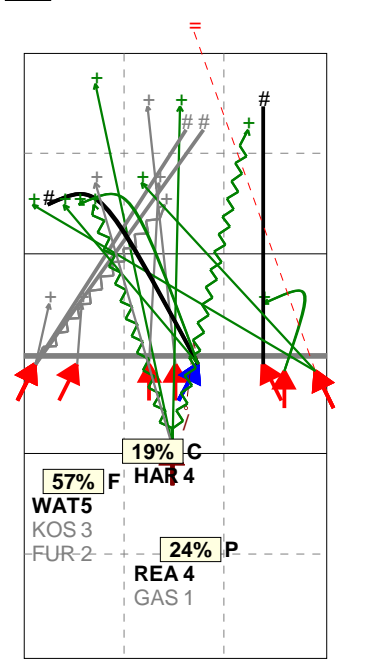
S1 Ind. *E% N # #% = /
5 -4% 27 4 15% 5 0



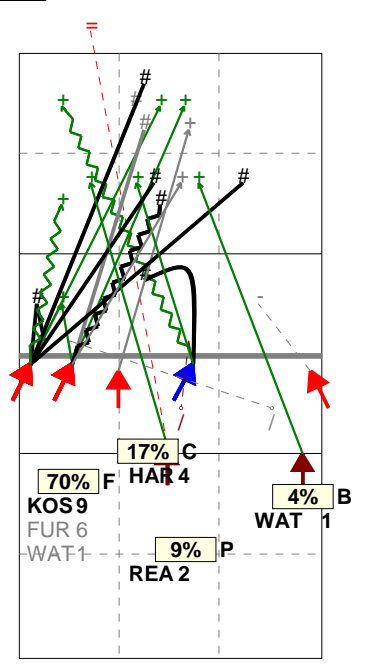
S6 Ind. *E% N # #% = /
6 12% 24 7 29% 4 0



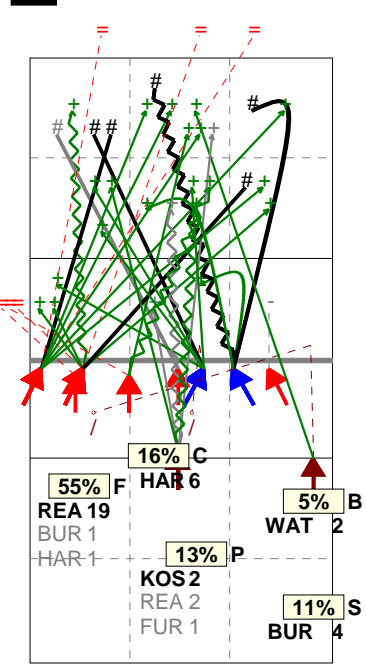
S5 Ind. *E% N # #% = /
5 10% 21 4 19% 1 1



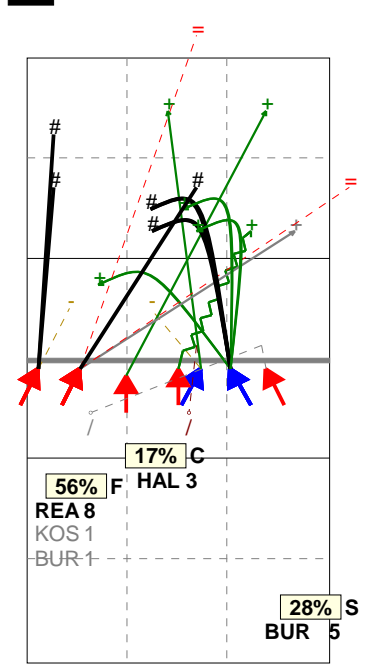
S4 Ind. *E% N # #% = /
6 22% 23 8 35% 1 2



S3 Ind. *E% N # #% = /
5 -5% 38 6 16% 6 2



S2 Ind. *E% N # #% = /
5 6% 18 5 28% 2 2



Legend: = (red circle), / (red circle), # (black square), Tip (wavy line), Soft (zigzag line)

Newcastle Staffs Ladies	1	25	19	25	21	90	11/09/20	National League	Women's D2N
City of Salford	3	20	25	27	25	97	15.15.00	Newcastle-u-Lyme	

Analysis selection

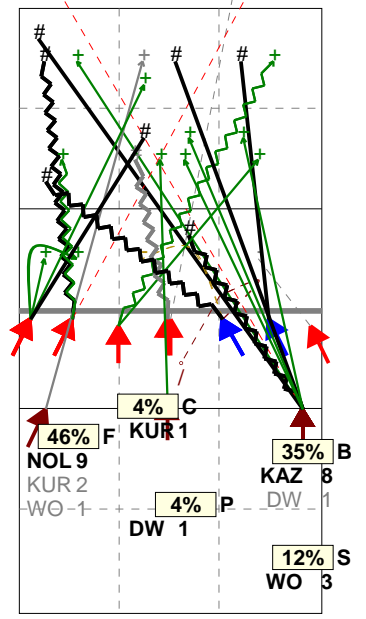
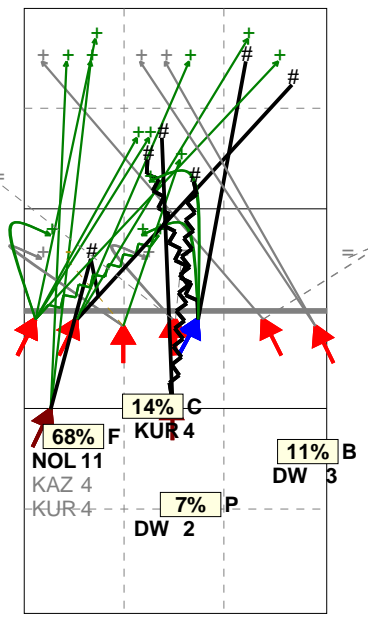
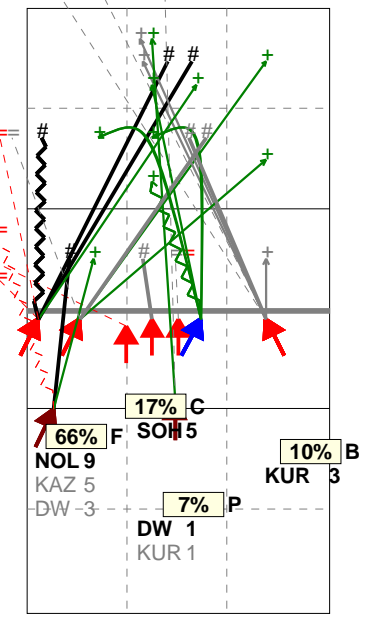
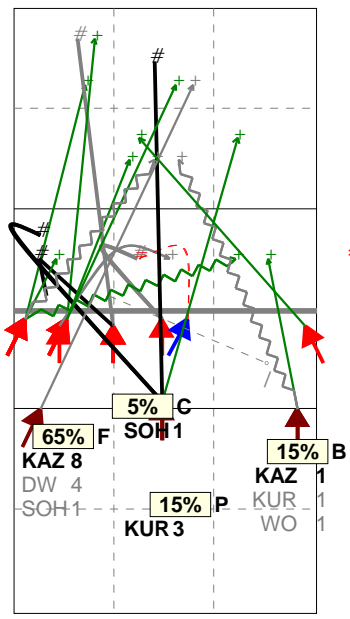
City of Salford | Attack | Rotation detail

S1 Ind. *E% N # #% = /
6 15% 20 5 25% 1 1

S6 Ind. *E% N # #% = /
4 -10 29 7 24% 10 0

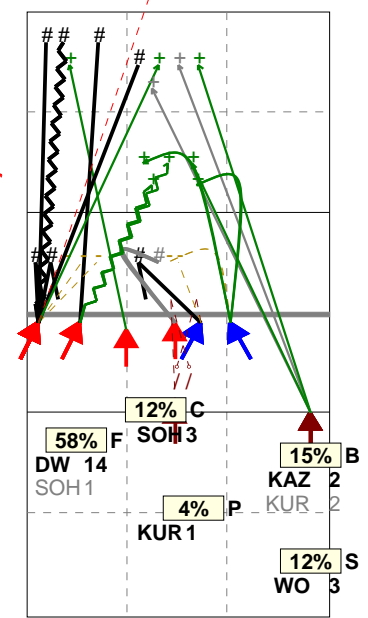
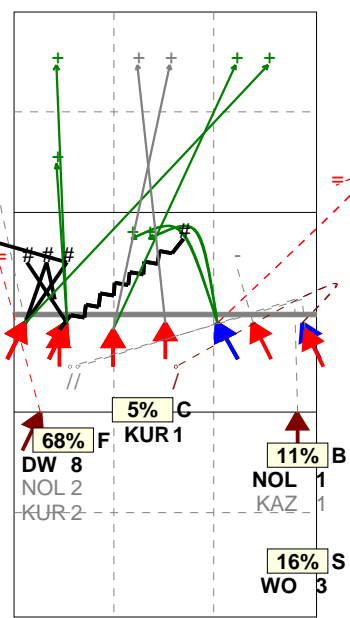
S5 Ind. *E% N # #% = /
6 11% 28 6 21% 3 0

S4 Ind. *E% N # #% = /
6 15% 26 8 31% 3 1



S3 Ind. *E% N # #% = /
4 -11 19 4 21% 3 3

S2 Ind. *E% N # #% = /
6 19% 26 8 31% 1 2



Legend: = (red circle), / (red circle), # (yellow triangle), ! (blue triangle), + (green triangle), # (black square), Tip (dashed line), Soft (wavy line)